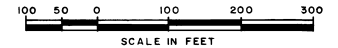


# PORT MALABAR UNIT FIFTY

PLAT BOOK *23*  
AND PAGE *18*



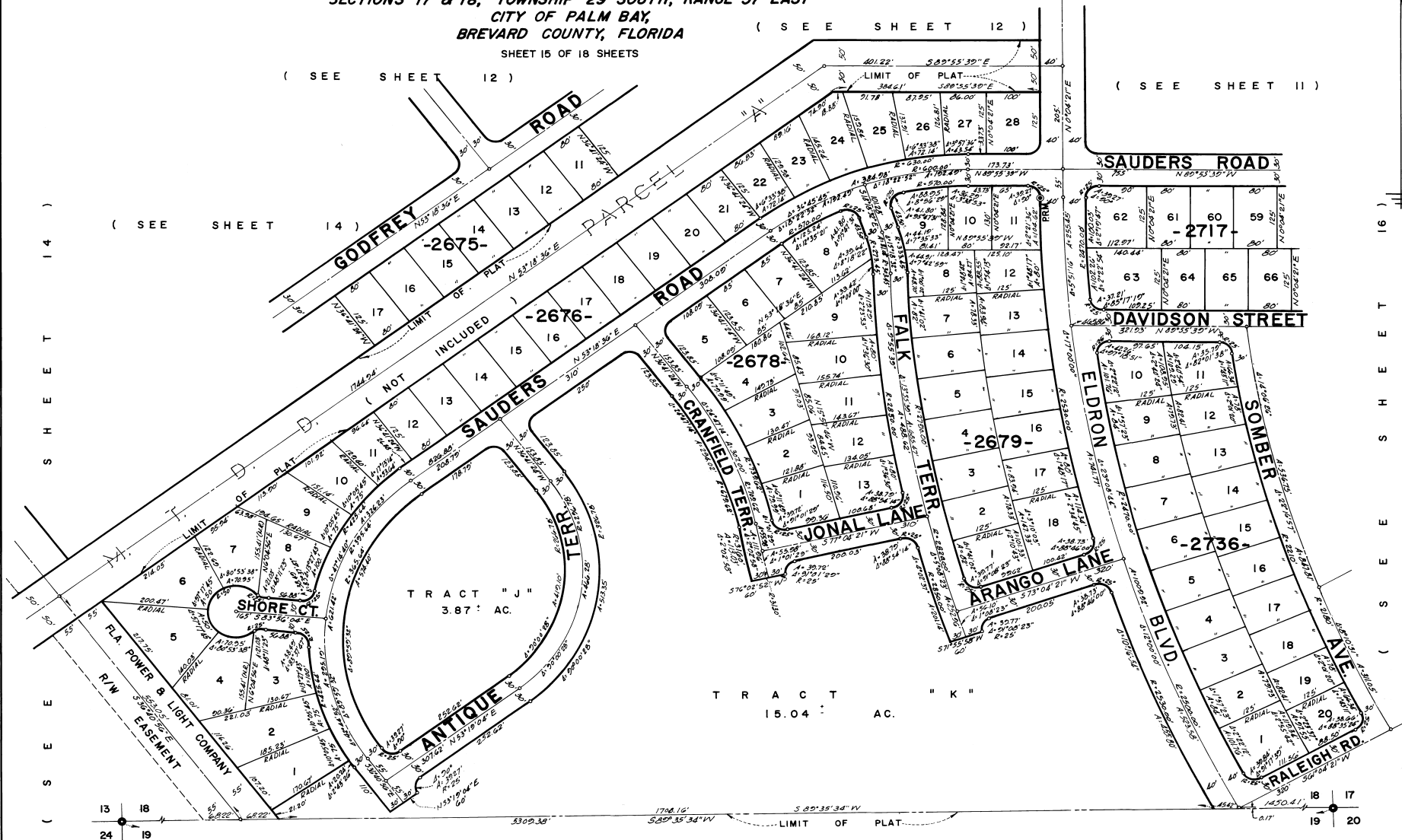
A SUBDIVISION OF A PORTION OF  
SECTIONS 17 & 18, TOWNSHIP 29 SOUTH, RANGE 37 EAST  
CITY OF PALM BAY,  
BREVARD COUNTY, FLORIDA

( SEE SHEET 12 )

SHEET 15 OF 18 SHEETS

( SEE SHEET 12 )

( SEE SHEET 11 )



CALCULATED BY W.T.  
DRAWN BY H.S.-M.M.  
CHECKED BY E.R.B.  
APPROVED BY CT

**JAMES EDWARD CLARK**  
CIVIL ENGINEER  
MIAMI - FLORIDA

SHEET 15 OF 18 SHEETS  
94 LOTS THIS SHEET