

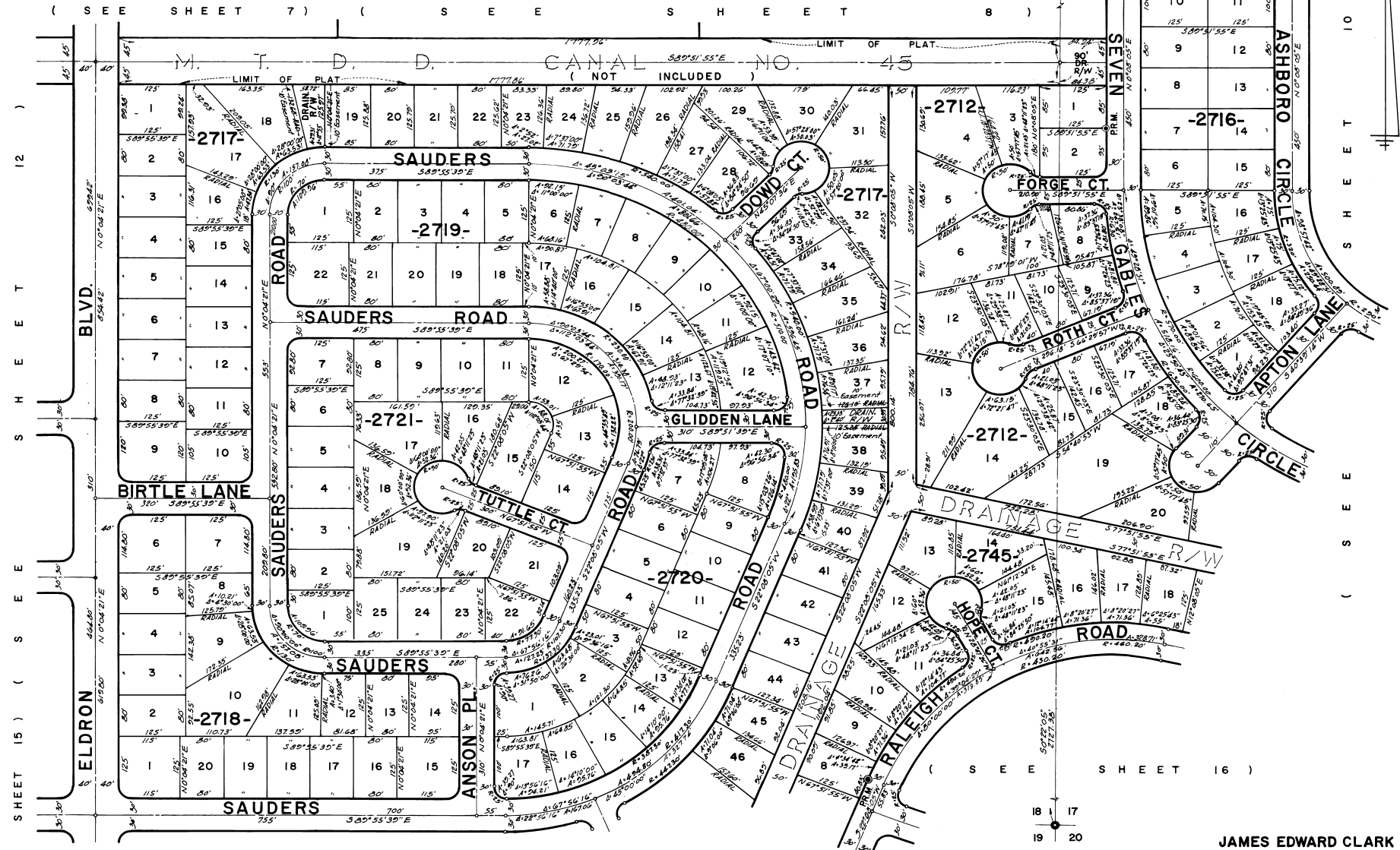
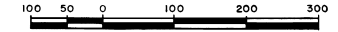
PORT MALABAR

UNIT FIFTY

A SUBDIVISION OF A PORTION OF
SECTIONS 17 & 18, TOWNSHIP 29 SOUTH, RANGE 37 EAST
CITY OF PALM BAY,
BREVARD COUNTY, FLORIDA

SHEET II OF 18 SHEETS

PLAT BOOK 23
AND PAGE 14



CALCULATED BY W.T.
DRAWN BY H.S.-M.P.
CHECKED BY E.R.B.
APPROVED BY CT

JAMES EDWARD CLARK
CIVIL ENGINEER
MIAMI-FLORIDA

SHEET II OF 18 SHEETS
179 LOTS THIS SHEET