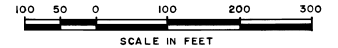


PORT MALABAR UNIT FIFTY

PLAT BOOK 23
AND PAGE 13



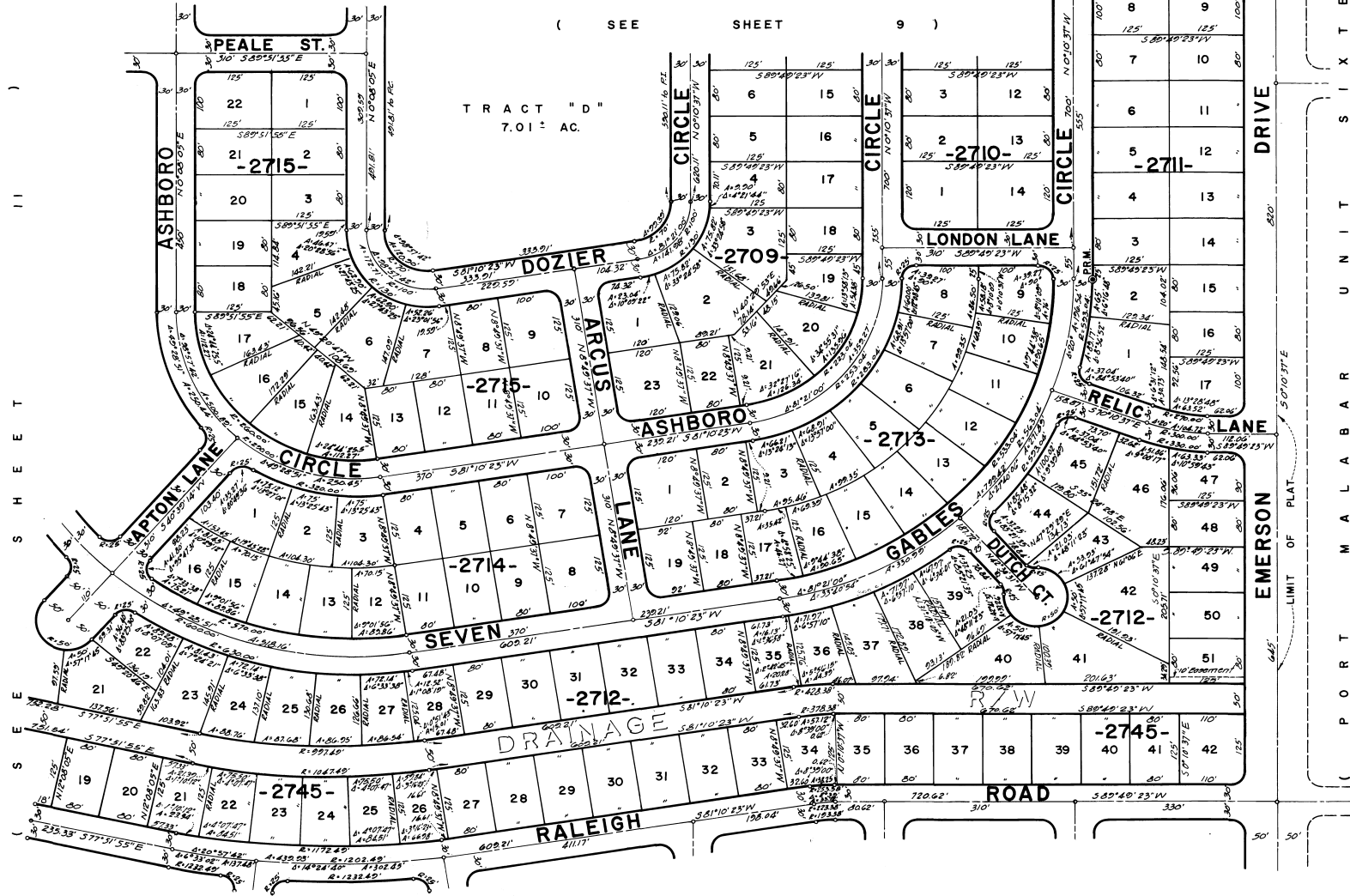
A SUBDIVISION OF A PORTION OF
SECTIONS 17 & 18, TOWNSHIP 29 SOUTH, RANGE 37 EAST
CITY OF PALM BAY,
BREVARD COUNTY, FLORIDA

(SEE SHEET 9)

SHEET 10 OF 18 SHEETS

(SEE SHEET 9)

(SEE SHEET 9)



(SEE SHEET 16)

(SEE SHEET 17)

(SEE SHEET 17)

(PORT MALABAR UNIT SIXTEEN)
 (P.B. 15 P.G. 98)
 (P.B. 15 P.G. 89)

JAMES EDWARD CLARK
CIVIL ENGINEER
MIAMI - FLORIDA

SHEET 10 OF 18 SHEETS
150 LOTS THIS SHEET

CALCULATED BY W.T.
 DRAWN BY H.S.-M.P.
 CHECKED BY E.R.B.
 APPROVED BY C.T.