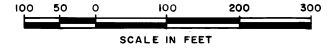
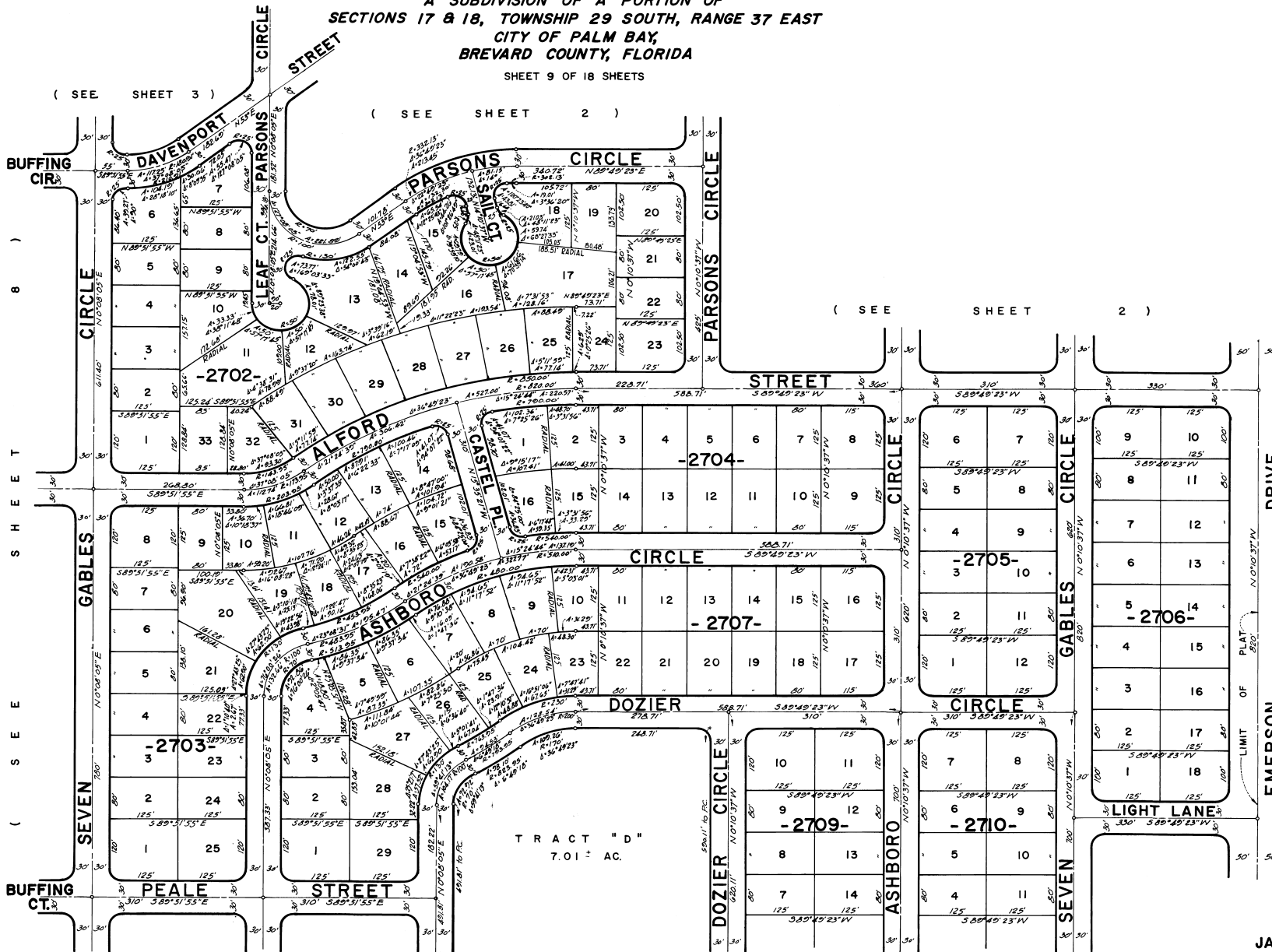


PORT MALABAR UNIT FIFTY

PLAT BOOK 23
AND PAGE 12



A SUBDIVISION OF A PORTION OF
SECTIONS 17 & 18, TOWNSHIP 29 SOUTH, RANGE 37 EAST
CITY OF PALM BAY,
BREVARD COUNTY, FLORIDA
SHEET 9 OF 18 SHEETS



(PORT MALABAR UNIT SIXTEEN)
(RB. 15, PG. 89)

JAMES EDWARD CLARK
CIVIL ENGINEER
MIAMI-FLORIDA

SHEET 9 OF 18 SHEETS
149 LOTS THIS SHEET

CALCULATED BY W.T.
DRAWN BY H.S. - J.M.
CHECKED BY E.R.B.
APPROVED BY C.T.