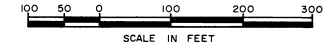
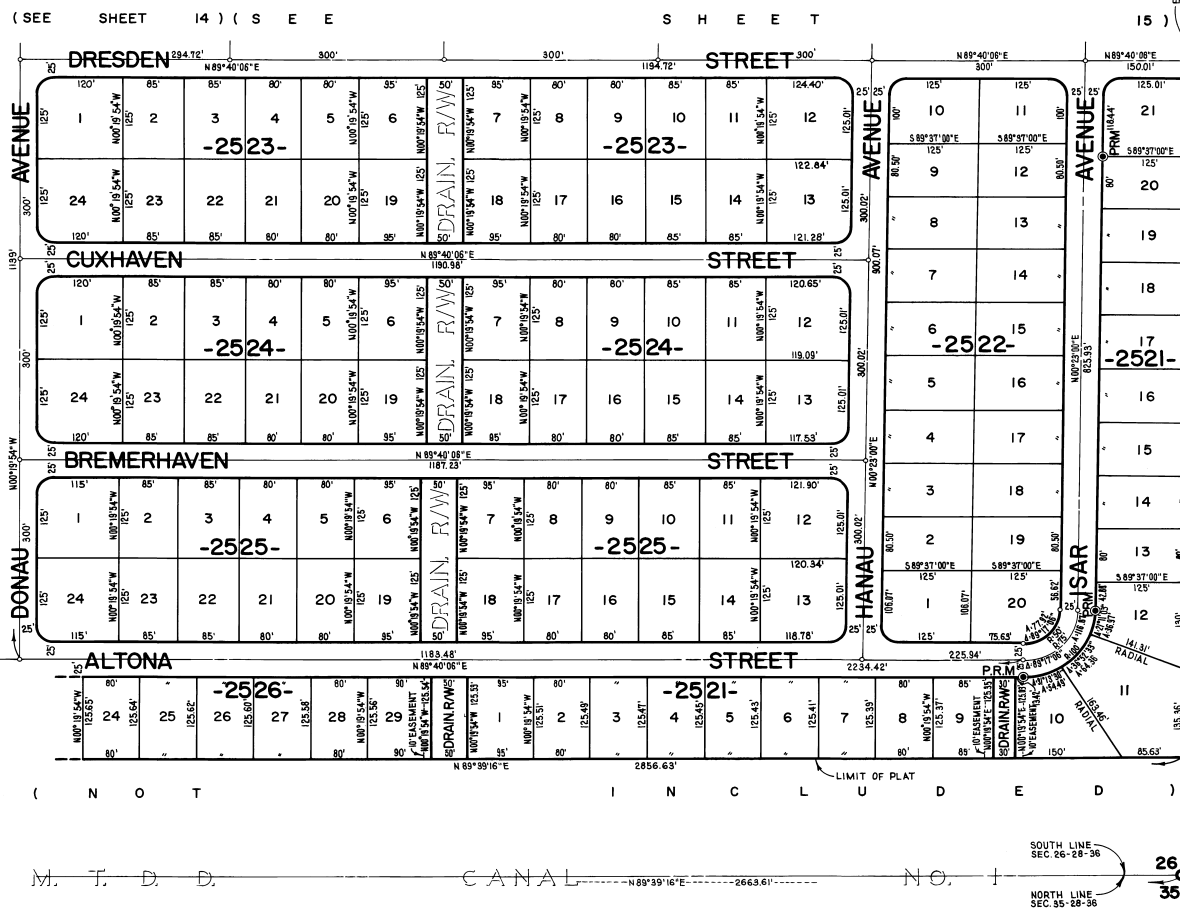


PORT MALABAR UNIT FORTY EIGHT

PLAT BOOK 22
AND PAGE 96



A SUBDIVISION OF A PORTION OF
SECTIONS 23, 24, AND 26, TOWNSHIP 28 SOUTH, RANGE 36 EAST
CITY OF PALM BAY
BREVARD COUNTY, FLORIDA
SHEET 16 OF 17 SHEETS



S H E E T 17)

LIMIT OF PLAT
S U B D I V I D E D
G O V E R N M E N T
P O R T U S .

CALCULATED BY *CT*
DRAWN BY *CT*
CHECKED BY *CT*
APPROVED BY *CT*

JAMES EDWARD CLARK
CIVIL ENGINEER
MIAMI - FLORIDA

SHEET 16 OF 17 SHEETS
119 LOTS THIS SHEET