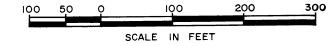


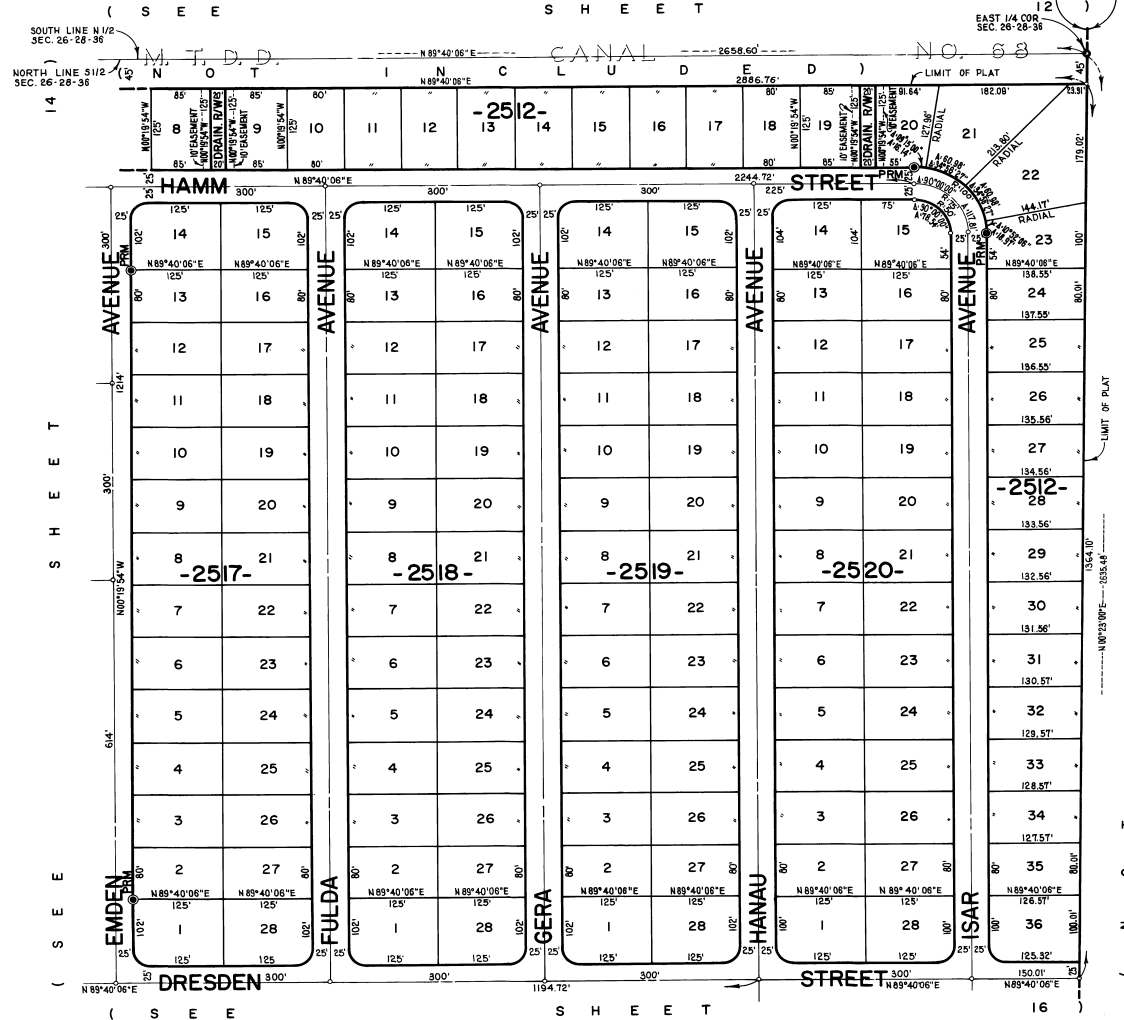
# PORT MALABAR UNIT FORTY EIGHT

PLAT BOOK 22  
AND PAGE 95



A SUBDIVISION OF A PORTION OF  
SECTIONS 23, 24, AND 26, TOWNSHIP 28 SOUTH, RANGE 36 EAST  
CITY OF PALM BAY  
BREVARD COUNTY, FLORIDA

SHEET 15 OF 17 SHEETS  
S H E E T



U. S. GOVERNMENT PROPERTY

JAMES EDWARD CLARK  
CIVIL ENGINEER  
MIAMI - FLORIDA

SHEET 15 OF 17 SHEETS  
141 LOTS THIS SHEET

CALCULATED BY *AC*  
DRAWN BY *AC*  
CHECKED BY *CT*  
APPROVED BY *CT*