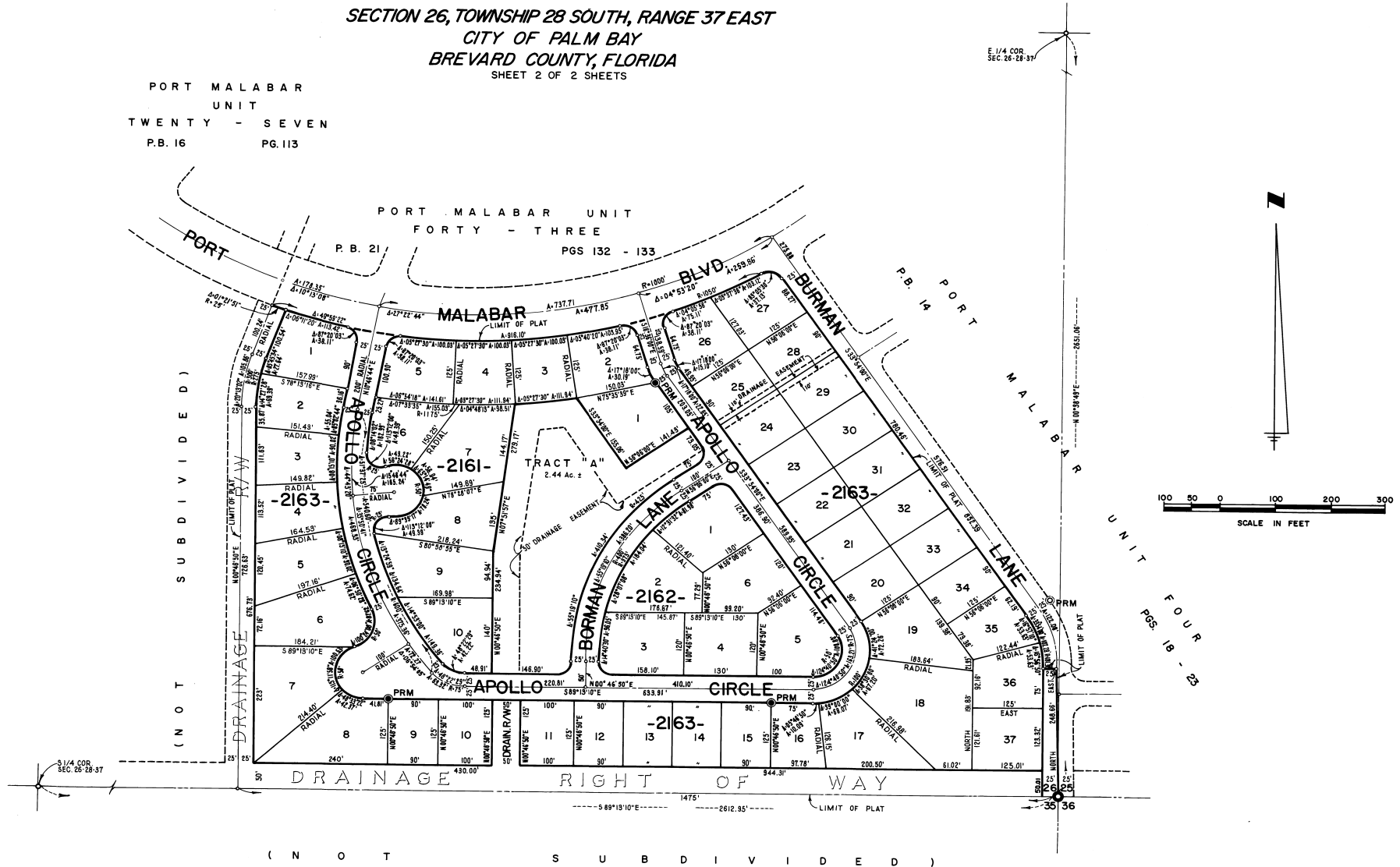


PORT MALABAR UNIT FORTY SEVEN

SECTION 26, TOWNSHIP 28 SOUTH, RANGE 37 EAST
CITY OF PALM BAY
BREVARD COUNTY, FLORIDA
SHEET 2 OF 2 SHEETS

PORT MALABAR
UNIT
TWENTY - SEVEN
P.B. 16 PG. 113



CALCULATED BY _____
DRAWN BY *(Signature)*
CHECKED BY _____
APPROVED BY _____

JAMES EDWARD CLARK
CIVIL ENGINEER
MIAMI - FLORIDA

SHEET 2 OF 2 SHEETS
53 LOTS THIS SHEET