

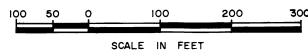
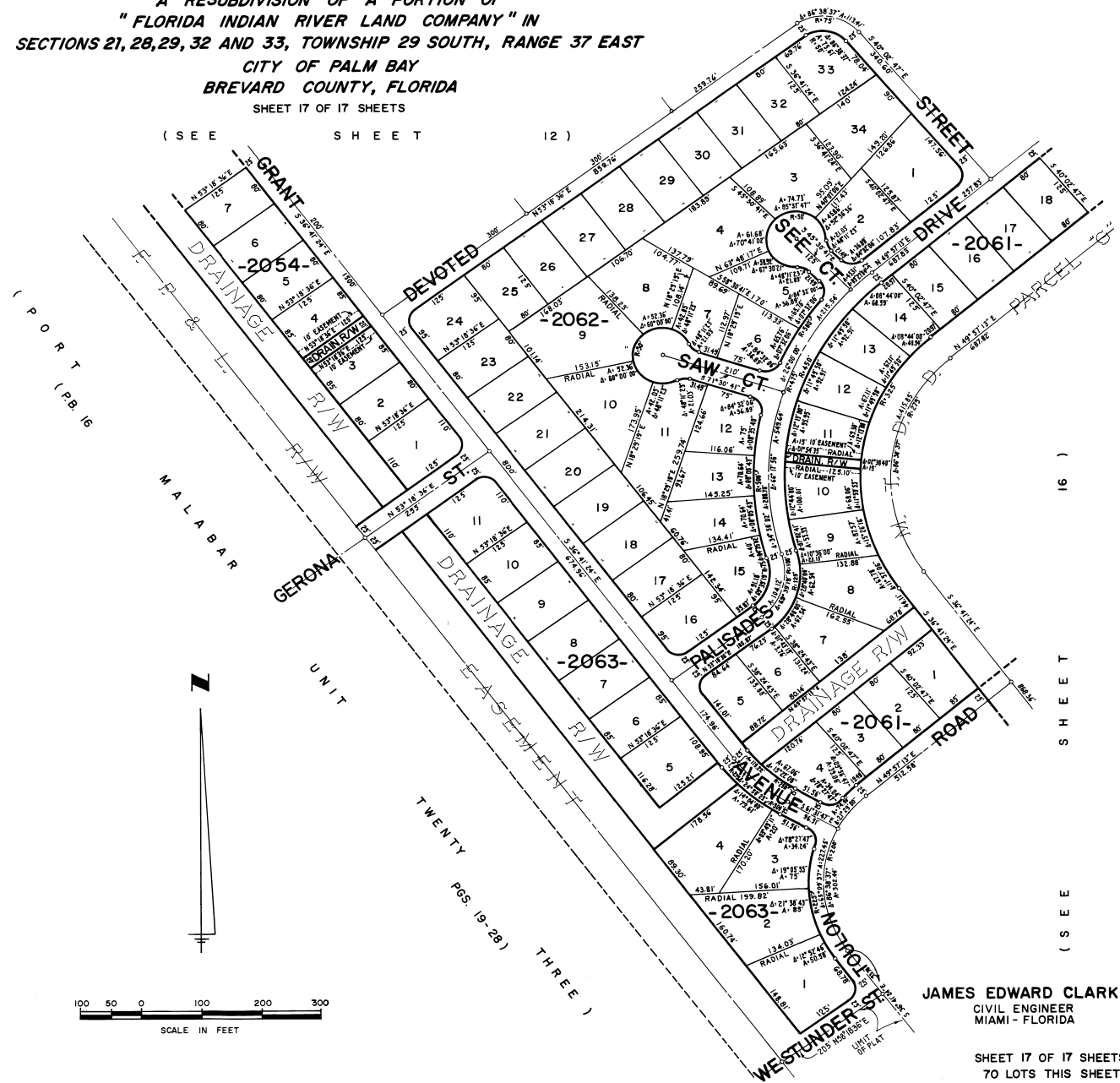
# PORT MALABAR UNIT FORTY SIX

PLAT BOOK 22  
AND PAGE 74

( SEE SHEET 13 )

A RESUBDIVISION OF A PORTION OF  
"FLORIDA INDIAN RIVER LAND COMPANY" IN  
SECTIONS 21, 28, 29, 32 AND 33, TOWNSHIP 29 SOUTH, RANGE 37 EAST  
CITY OF PALM BAY  
BREVARD COUNTY, FLORIDA  
SHEET 17 OF 17 SHEETS

( SEE SHEET 12 )



JAMES EDWARD CLARK  
CIVIL ENGINEER  
MIAMI - FLORIDA

SHEET 17 OF 17 SHEETS  
70 LOTS THIS SHEET

CALCULATED BY  
DRAWN BY  
CHECKED BY  
APPROVED BY