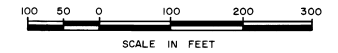


PORT MALABAR UNIT FORTY SIX

PLAT BOOK 22
AND PAGE 72



A RESUBDIVISION OF A PORTION OF
"FLORIDA INDIAN RIVER LAND COMPANY"
SECTIONS 21, 28, 29, 32 AND 33, TOWNSHIP 29 SOUTH, RANGE 37 EAST
CITY OF PALM BAY
BREVARD COUNTY, FLORIDA

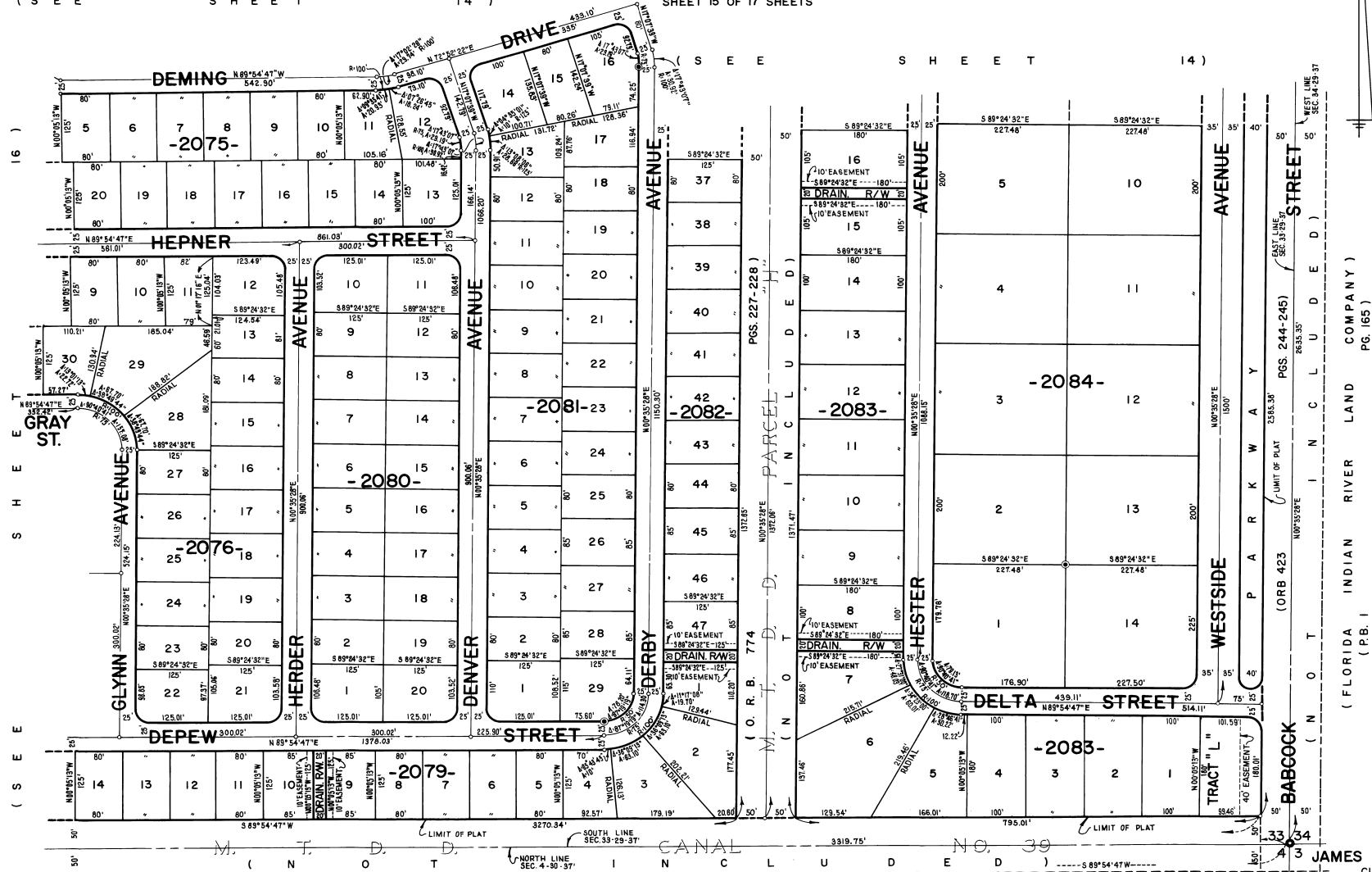
(S E E S H E E T

1 4)

SHEET 15 OF 17 SHEETS

(S E E S H E E T

1 4)



(FLORIDA INDIAN RIVER LAND COMPANY)
 (P.B. 1)

JAMES EDWARD CLARK
CIVIL ENGINEER
MIAMI - FLORIDA

CALCULATED BY
 DRAWN BY
 CHECKED BY
 APPROVED BY

(P O R T M A L A B A R U N I T F O R T Y S I X)

(P.B. 16

PGS. 19 - 28)

SHEET 15 OF 17 SHEETS
138 LOTS THIS SHEET