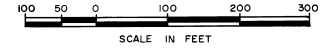


PORT MALABAR UNIT FORTY SIX

PLAT BOOK 22
AND PAGE 70

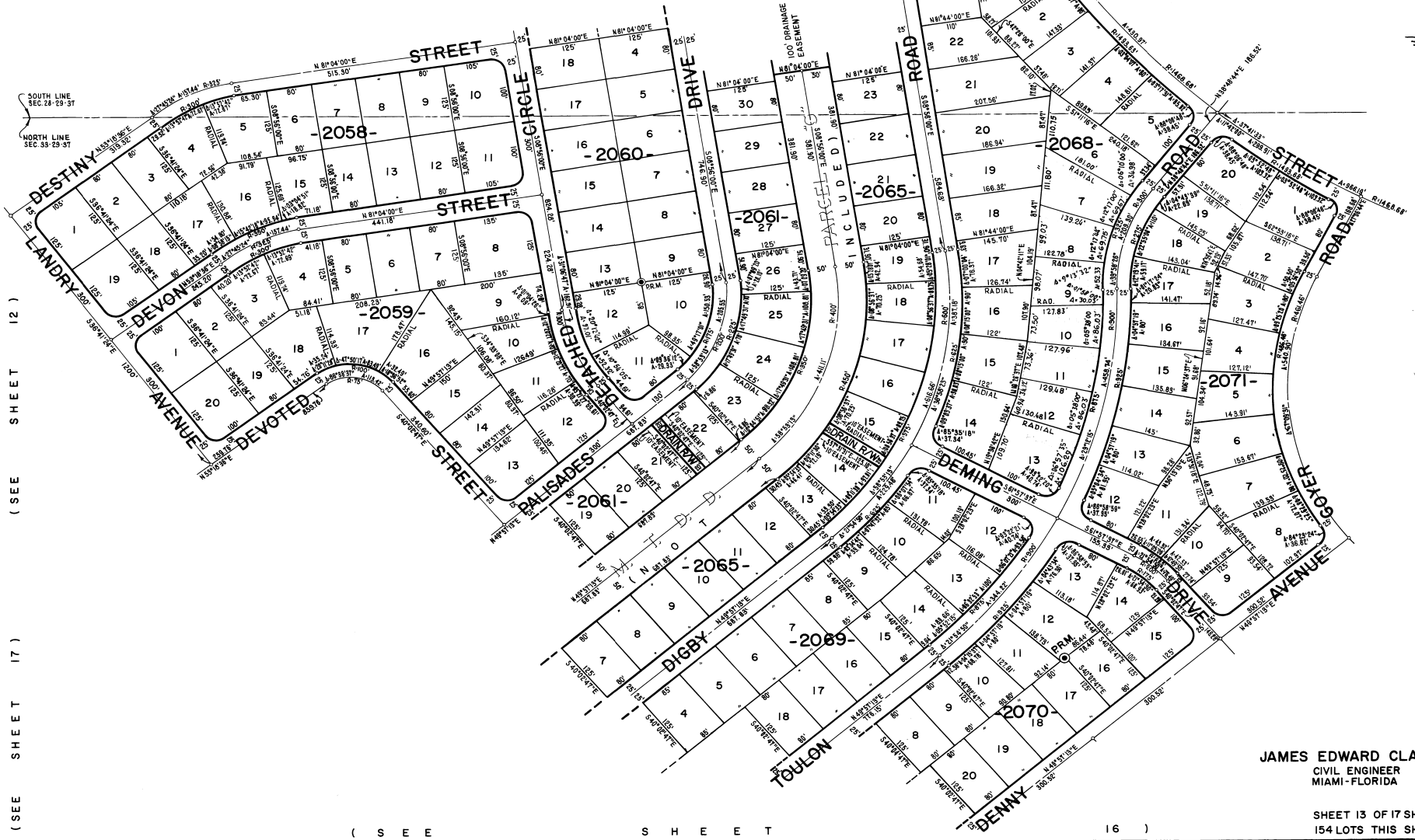


A RESUBDIVISION OF A PORTION OF
"FLORIDA INDIAN RIVER LAND COMPANY" IN
SECTIONS 21, 28, 29, 32 AND 33, TOWNSHIP 29 SOUTH, RANGE 37 EAST
CITY OF PALM BAY
BREVARD COUNTY, FLORIDA
SHEET 13 OF 17 SHEETS

(SEE SHEET 10)

(SEE SHEET 12)

(SEE SHEET 10)



JAMES EDWARD CLARK
CIVIL ENGINEER
MIAMI-FLORIDA

SHEET 13 OF 17 SHEETS
154 LOTS THIS SHEET

CALCULATED BY
DRAWN BY
CHECKED BY
APPROVED BY

(SEE SHEET 16)