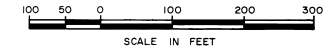


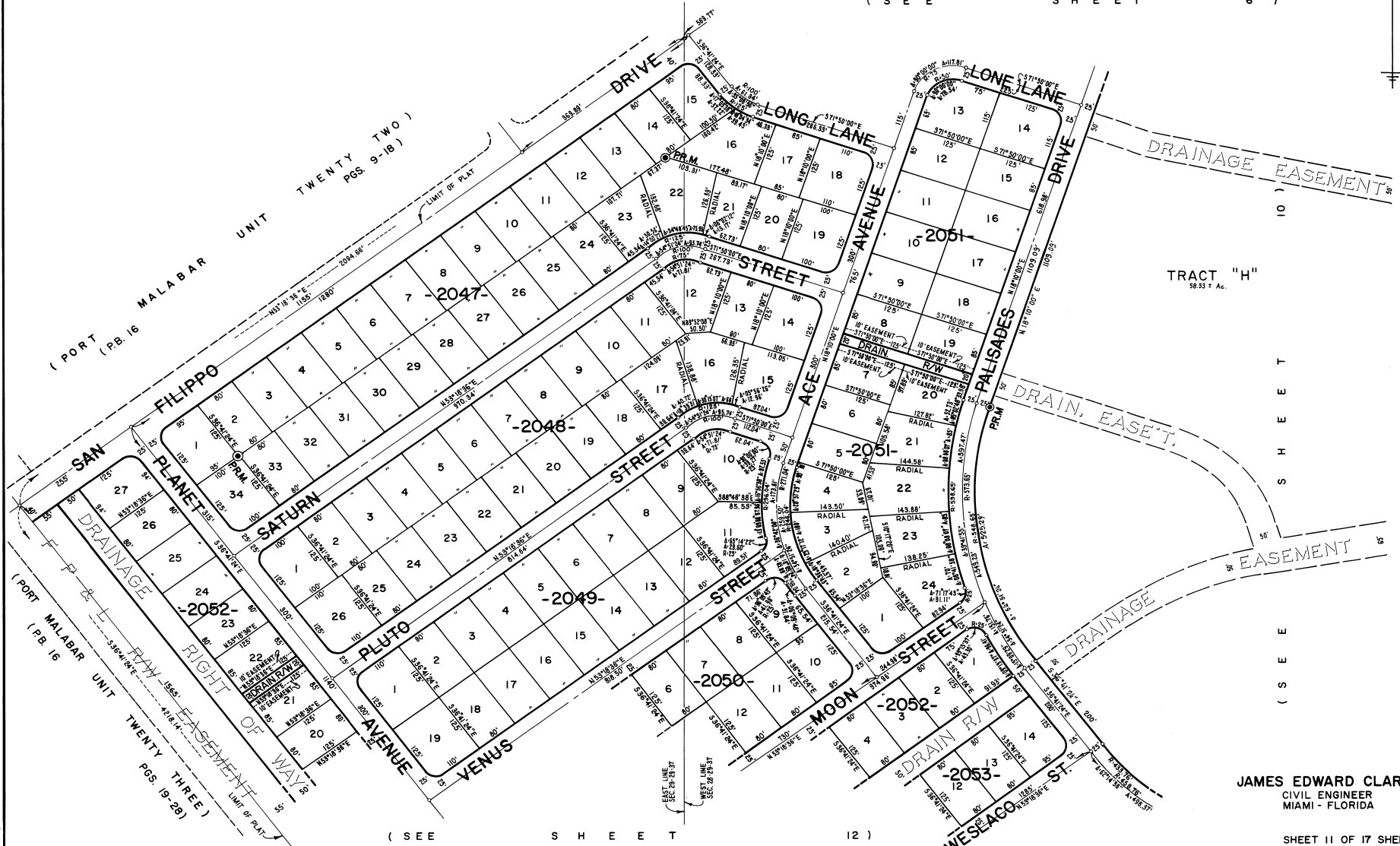
# PORT MALABAR UNIT FORTY SIX

PLAT BOOK 22  
AND PAGE 68



A RESUBDIVISION OF A PORTION OF  
"FLORIDA INDIAN RIVER LAND COMPANY" IN  
SECTIONS 21, 28, 29, 32 AND 33, TOWNSHIP 29 SOUTH, RANGE 37 EAST  
CITY OF PALM BAY  
BREVARD COUNTY, FLORIDA  
SHEET 11 OF 17 SHEETS

( SEE SHEET 6 )



( PORT MALABAR UNIT TWENTY TWO )  
PAGES 9-18 )  
LIMIT OF PLAT

( PORT MALABAR UNIT TWENTY THREE )  
PAGES 19-28 )  
LIMIT OF PLAT

( SEE SHEET 12 )

JAMES EDWARD CLARK  
CIVIL ENGINEER  
MIAMI - FLORIDA

SHEET 11 OF 17 SHEETS  
125 LOTS THIS SHEET

CALCULATED BY  
DRAWN BY  
CHECKED BY  
APPROVED BY