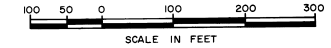


PORT MALABAR UNIT FORTY SIX

PLAT BOOK 22
AND PAGE 65



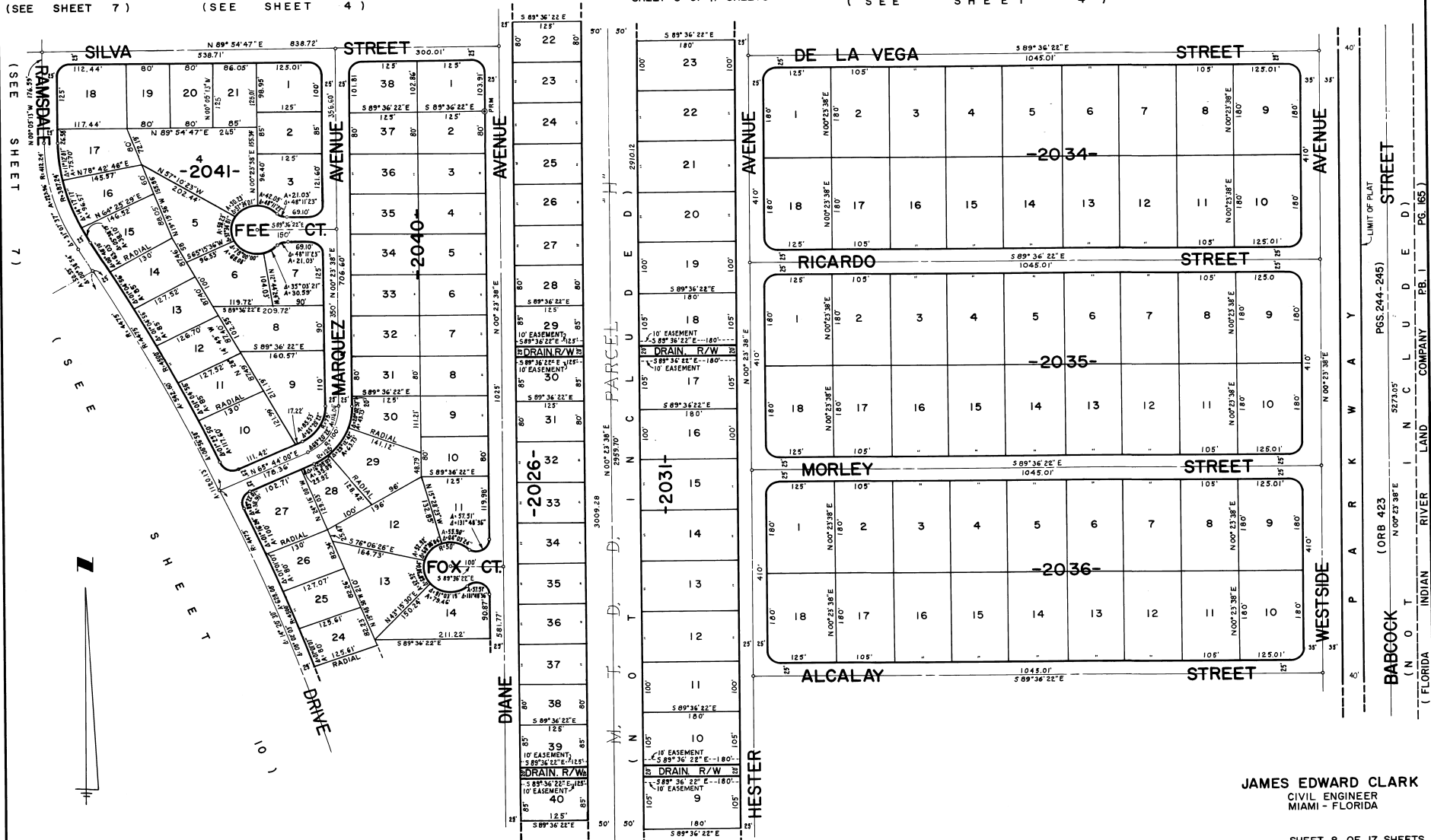
A RESUBDIVISION OF A PORTION OF
"FLORIDA INDIAN RIVER LAND COMPANY" IN
SECTIONS 21, 28, 29, 32 AND 33, TOWNSHIP 29 SOUTH, RANGE 37 EAST
CITY OF PALM BAY
BREVARD COUNTY, FLORIDA

(SEE SHEET 7)

(SEE SHEET 4)

SHEET 8 OF 17 SHEETS

(SEE SHEET 4)



(SEE SHEET 7)

(SEE SHEET 7)

(SEE SHEET 7)

(SEE SHEET 7)

(SEE SHEET 7)

(SEE SHEET 4)

SHEET 8 OF 17 SHEETS

(SEE SHEET 4)

CALCULATED BY
DRAWN BY
CHECKED BY
APPROVED BY

JAMES EDWARD CLARK
CIVIL ENGINEER
MIAMI - FLORIDA

SHEET 8 OF 17 SHEETS
138 LOTS THIS SHEET