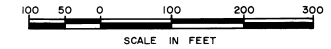
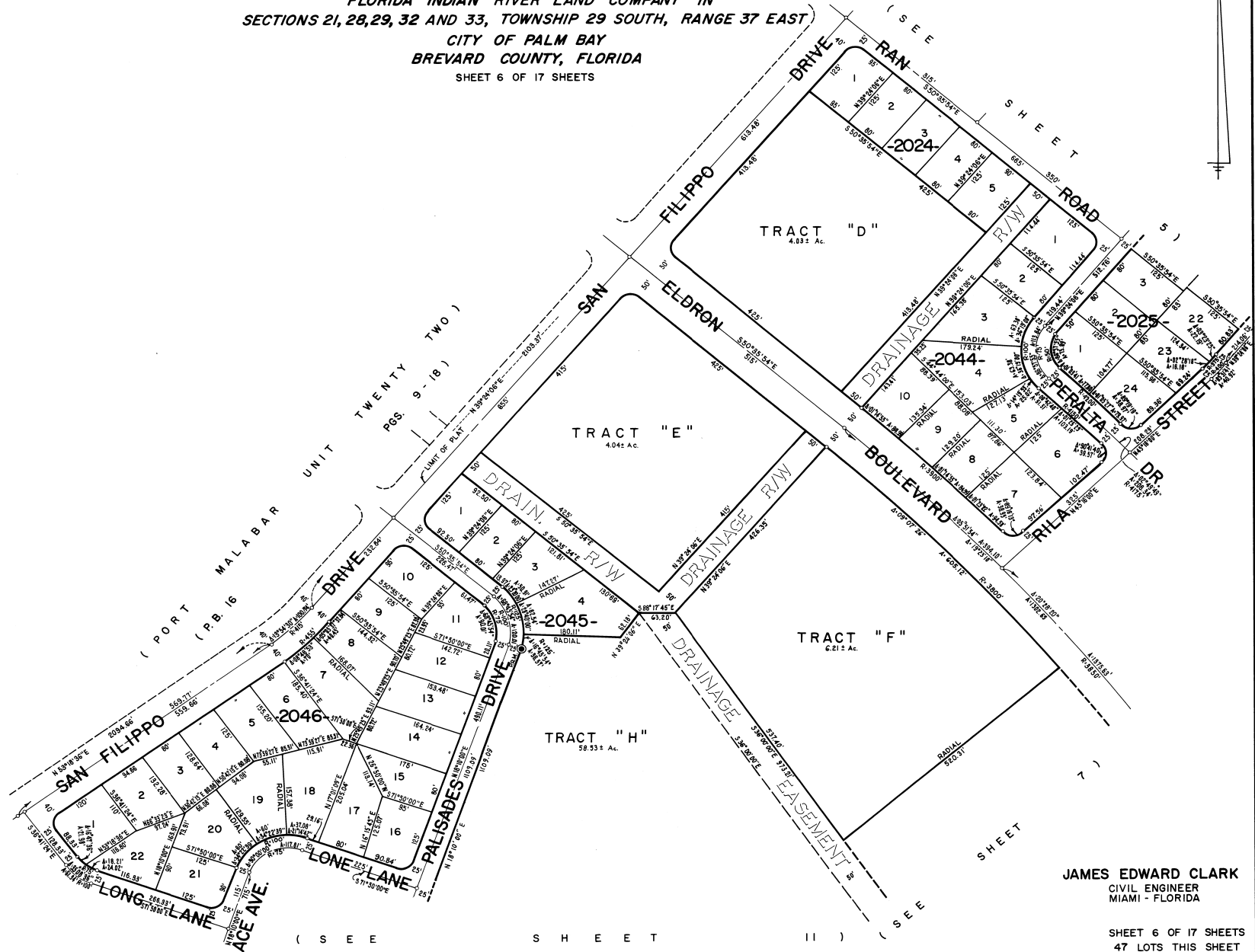


PORT MALABAR UNIT FORTY SIX

PLAT BOOK 22
AND PAGE 63



A RESUBDIVISION OF A PORTION OF
"FLORIDA INDIAN RIVER LAND COMPANY" IN
SECTIONS 21, 28, 29, 32 AND 33, TOWNSHIP 29 SOUTH, RANGE 37 EAST
CITY OF PALM BAY
BREVARD COUNTY, FLORIDA
SHEET 6 OF 17 SHEETS



CALCULATED BY
DRAWN BY
CHECKED BY
APPROVED BY

JAMES EDWARD CLARK
CIVIL ENGINEER
MIAMI - FLORIDA

SHEET 6 OF 17 SHEETS
47 LOTS THIS SHEET