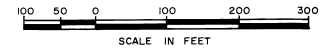


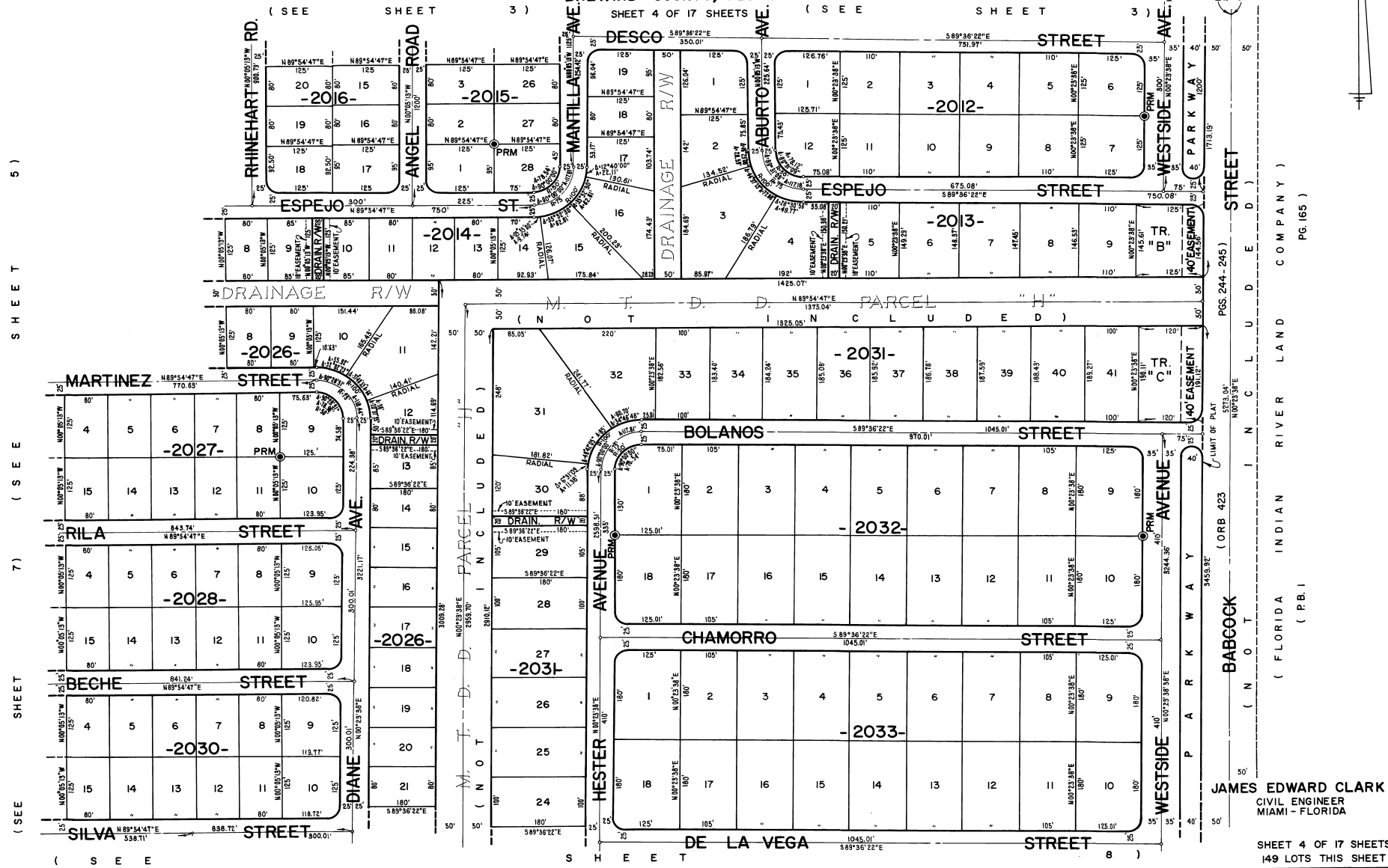
PORT MALABAR UNIT FORTY SIX

PLAT BOOK 22
AND PAGE 61



A RESUBDIVISION OF A PORTION OF
"FLORIDA INDIAN RIVER LAND COMPANY" IN
SECTIONS 21, 28, 29, 32 AND 33, TOWNSHIP 29 SOUTH, RANGE 37 EAST
CITY OF PALM BAY

BREVARD COUNTY, FLORIDA



(SEE SHEET 5)
 (SEE SHEET 7)
 (SEE SHEET 8)

EAST LINE
 SEC. 28-29-37
 WEST LINE
 SEC. 27-28-37

PGS. 244 - 245

SETS 04
 N 00°23'38"E

LIMIT OF PLAT

(ORB 423)

BABBOK

(N O T)

(P.B.I)

(FLORIDA INDIAN RIVER LAND COMPANY)
 PG. 165

JAMES EDWARD CLARK
 CIVIL ENGINEER
 MIAMI - FLORIDA

CALCULATED BY
 DRAWN BY
 CHECKED BY
 APPROVED BY

SHEET 4 OF 17 SHEETS
 149 LOTS THIS SHEET