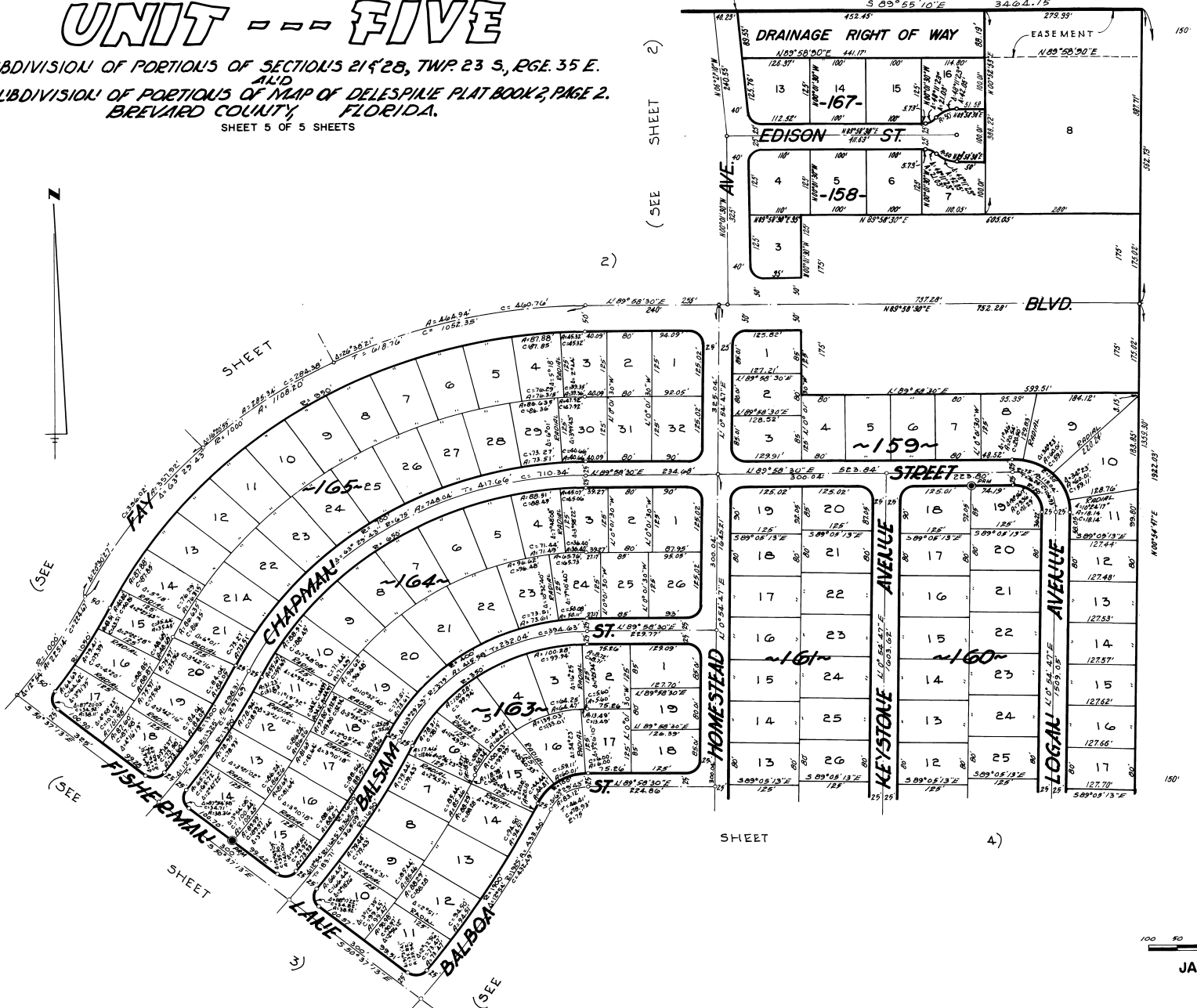


PORT ST. JOHN

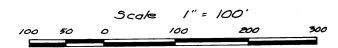
UNIT -- FIVE

A SUBDIVISION OF PORTIONS OF SECTIONS 21 & 28, TWP 23 S, RGE. 35 E.
ALID
A RESUBDIVISION OF PORTIONS OF MAP OF DELESPINE PLAT BOOK 2, PAGE 2.
BREVARD COUNTY, FLORIDA.
SHEET 5 OF 5 SHEETS

South Line of
the North 3360.27'
of Sec. 21-23-35
MAP OF DELESPINE PLAT BOOK 2, PAGE 2.
S 85° 55' 10" E 3464.15'



Highway No. 95
SECTION 70220-2404, SRD No. 1041, SR 9 (1-95), BREVARD COUNTY LAW CASE No. 6733



JAMES EDWARD CLARK
CIVIL ENGINEER
MIAMI - FLORIDA

SHEET 5 OF 5 SHEETS
133 LOTS THIS SHEET

Calc. By: M.H.K.
Drawn By: H.K.P.
Checked By: J.B.M.A.M.
Approved By: J.B.