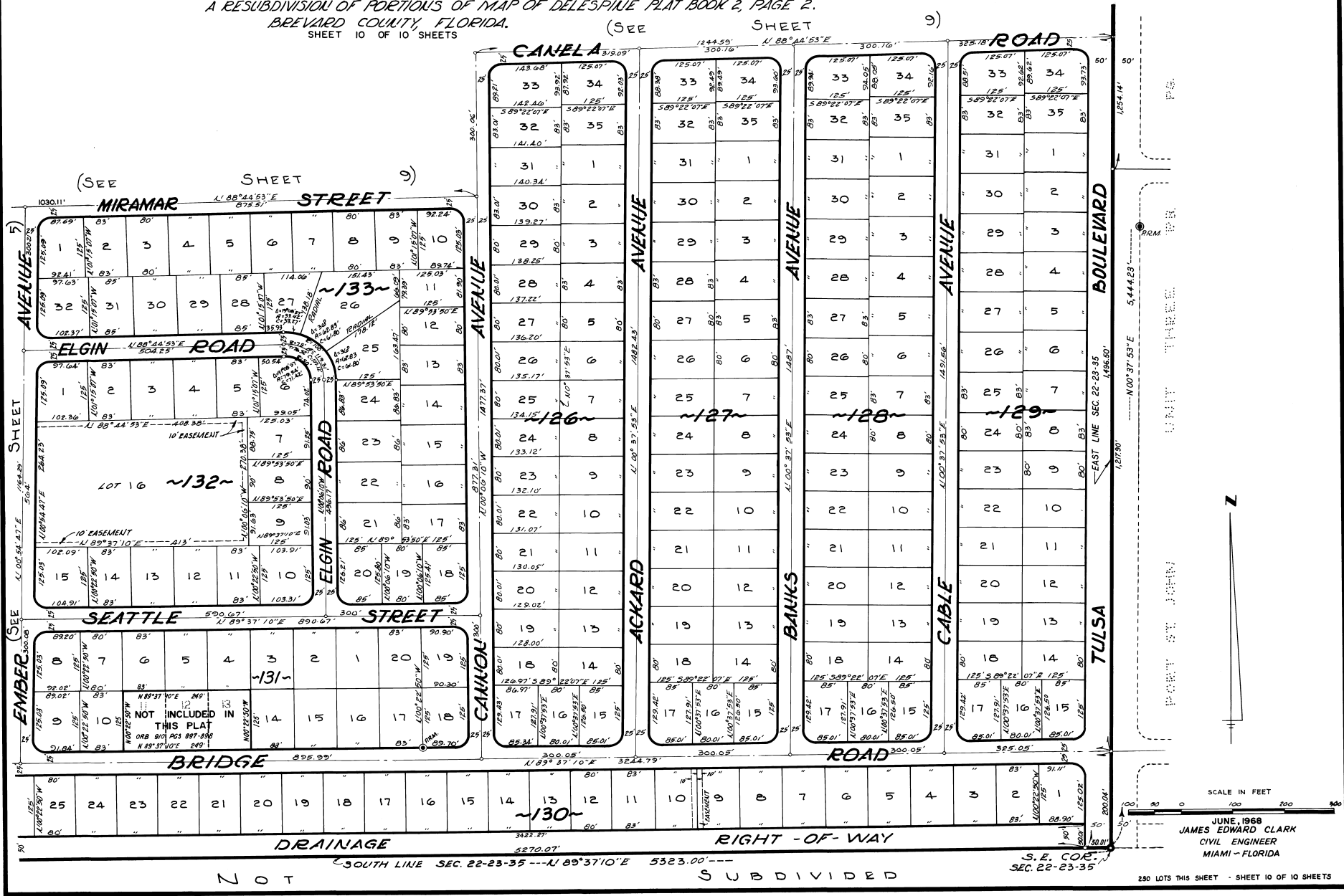


PORT ST. JOHN UNIT -- FOUR

A SUBDIVISION OF A PORTION OF SECTION 22, TOWNSHIP 23 SOUTH, RANGE 35 EAST.
A RESUBDIVISION OF PORTIONS OF MAP OF DELESPLE PLAT BOOK 2, PAGE 2.
BREVARD COUNTY, FLORIDA. (SEE SHEET 9)



Calc. By: T.S.M.
DRAWN BY: H.K.F.
CHECKED BY: F.C.H.
APPROVED BY: J.B.

NOT

SUBDIVIDED

S. E. COR.
SEC. 22-23-35

JUNE 1968
JAMES EDWARD CLARK
CIVIL ENGINEER
MIAMI - FLORIDA

230 LOTS THIS SHEET - SHEET 10 OF 10 SHEETS