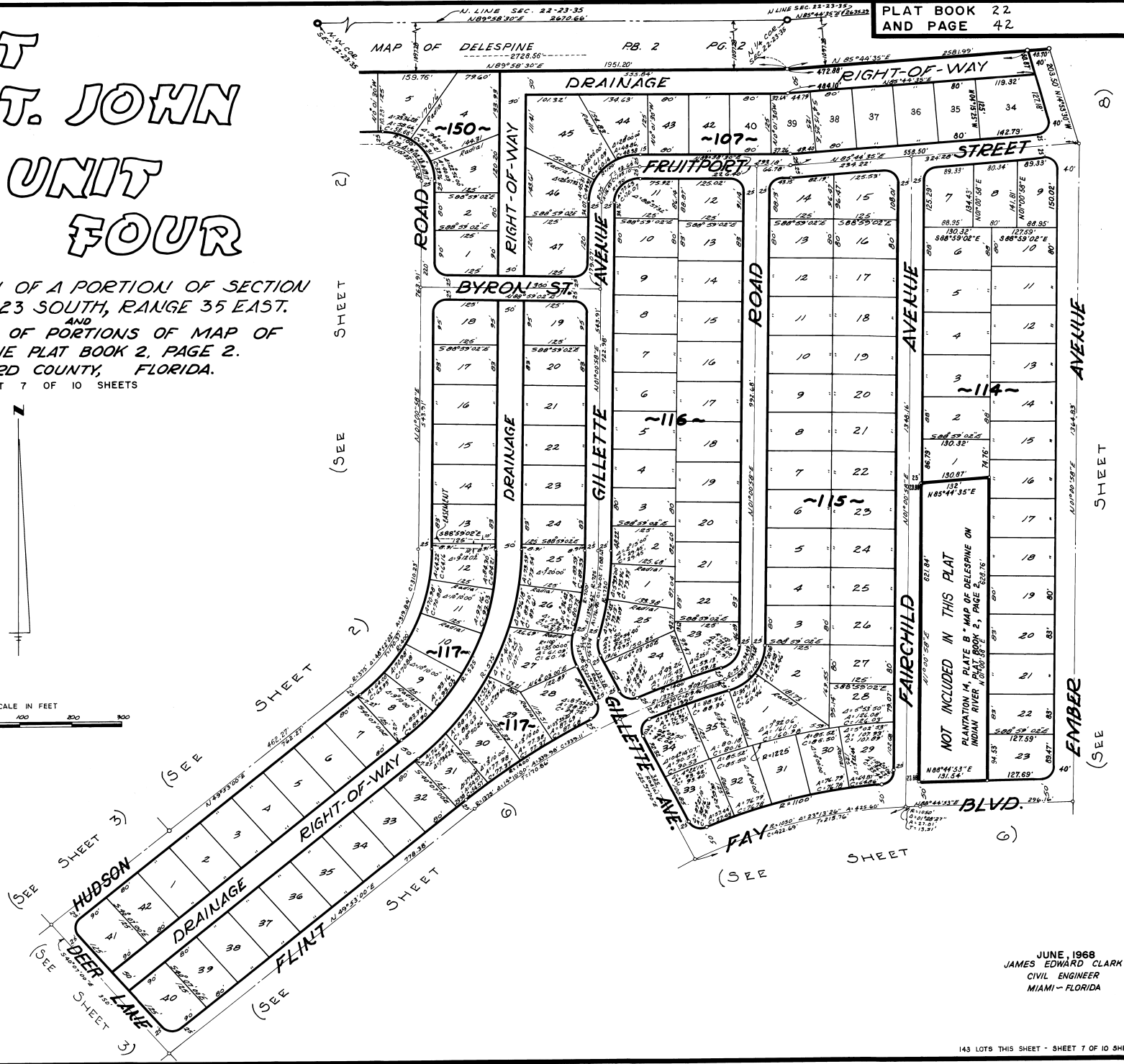
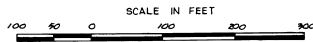


# PORT ST. JOHN UNIT FOUR

A SUBDIVISION OF A PORTION OF SECTION  
22, TOWNSHIP 23 SOUTH, RANGE 35 EAST.  
AND  
A RESUBDIVISION OF PORTIONS OF MAP OF  
DELESPINE PLAT BOOK 2, PAGE 2.  
BREVARD COUNTY, FLORIDA.  
SHEET 7 OF 10 SHEETS



PLAT BOOK 22  
AND PAGE 42

Calc By T.S.M.  
DRAWN BY P.S.M.  
CHECKED BY F.F.H.  
APPROVED BY J.B.

JUNE, 1968  
JAMES EDWARD CLARK  
CIVIL ENGINEER  
MIAMI - FLORIDA