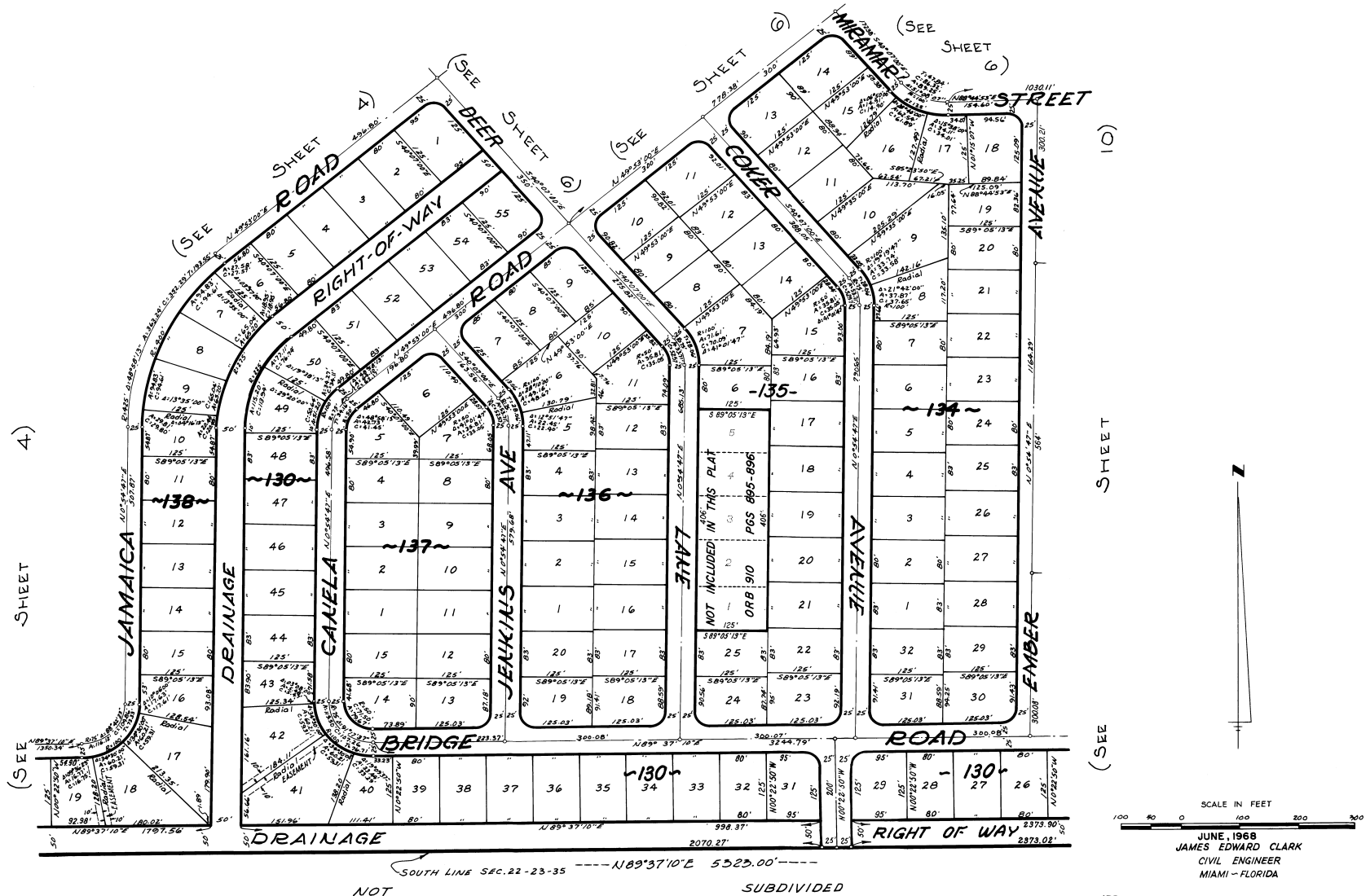


PORT ST. JOHN

UNIT -- FOUR

PLAT BOOK 22
AND PAGE 40

A SUBDIVISION OF A PORTION OF SECTION 22, TOWNSHIP 23 SOUTH, RANGE 35 EAST.
A RESUBDIVISION OF PORTIONS OF MAP OF DELESPINE PLAT BOOK 2, PAGE 2.
BREVARD COUNTY, FLORIDA.
SHEET 5 OF 10 SHEETS



CALC. BY T.S.M.H.
DRAWN BY R.C.G.
CHECKED BY F.H.
APPROVED BY J.B.

NOT SUBDIVIDED