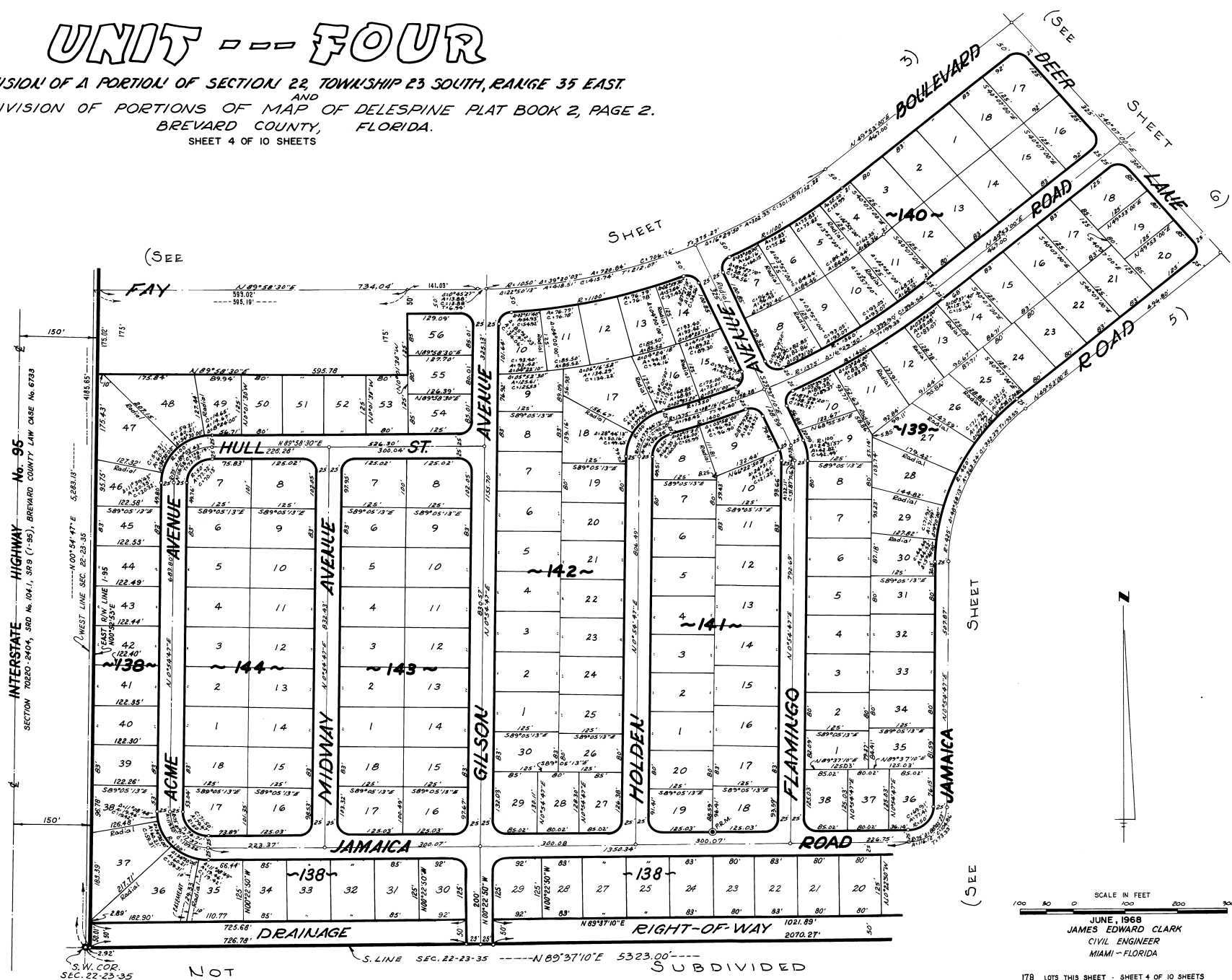


PORT ST. JOHN

UNIT -- FOUR

A SUBDIVISION OF A PORTION OF SECTION 22, TOWNSHIP 23 SOUTH, RANGE 35 EAST.
AND
A RESUBDIVISION OF PORTIONS OF MAP OF DELESPINE PLAT BOOK 2, PAGE 2.
BREVARD COUNTY, FLORIDA.
SHEET 4 OF 10 SHEETS



CALC. BY T.S.M.
DRAWN BY E.C.G.
CHECKED BY F.H.
APPROVED BY J.B.

SCALE IN FEET
0 100 200 300
JUNE, 1968
JAMES EDWARD CLARK
CIVIL ENGINEER
MIAMI - FLORIDA
178 LOTS THIS SHEET - SHEET 4 OF 10 SHEETS