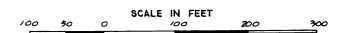
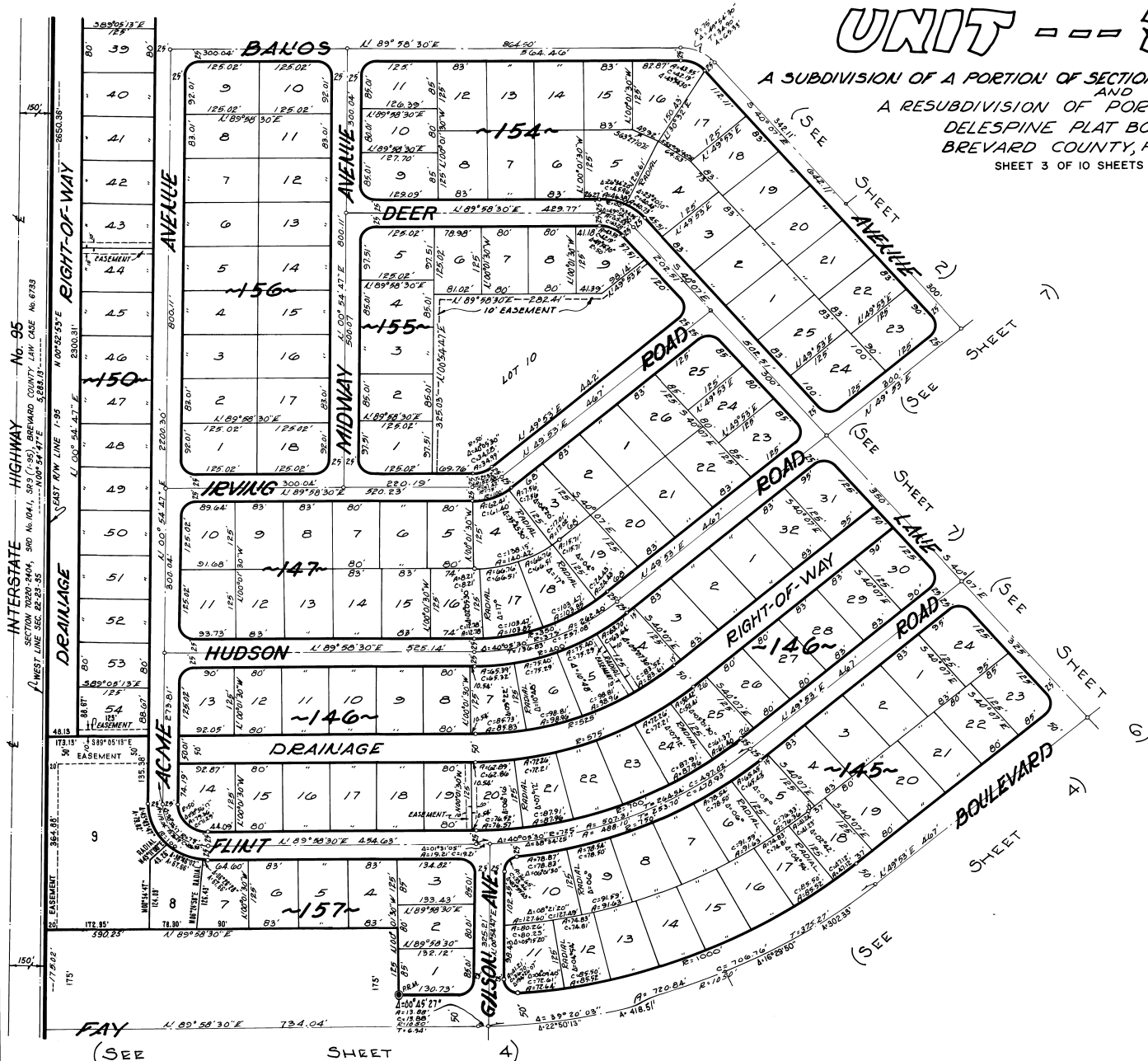


PORT ST. JOHN UNIT --- FOUR

A SUBDIVISION OF A PORTION OF SECTION 22, TOWNSHIP 23 SOUTH, RANGE 35 EAST,
AND
A RESUBDIVISION OF PORTIONS OF MAP OF
DELESPINE PLAT BOOK 2, PAGE 2.
BREVARD COUNTY, FLORIDA.
SHEET 3 OF 10 SHEETS

(SEE SHEET 2)



JUNE, 1968
JAMES EDWARD CLARK
CIVIL ENGINEER
MIAMI - FLORIDA

CALC. BY T.S.M. II
DRAWN BY H.K.F.
CHECKED BY F.W.
APPROVED BY J.B.