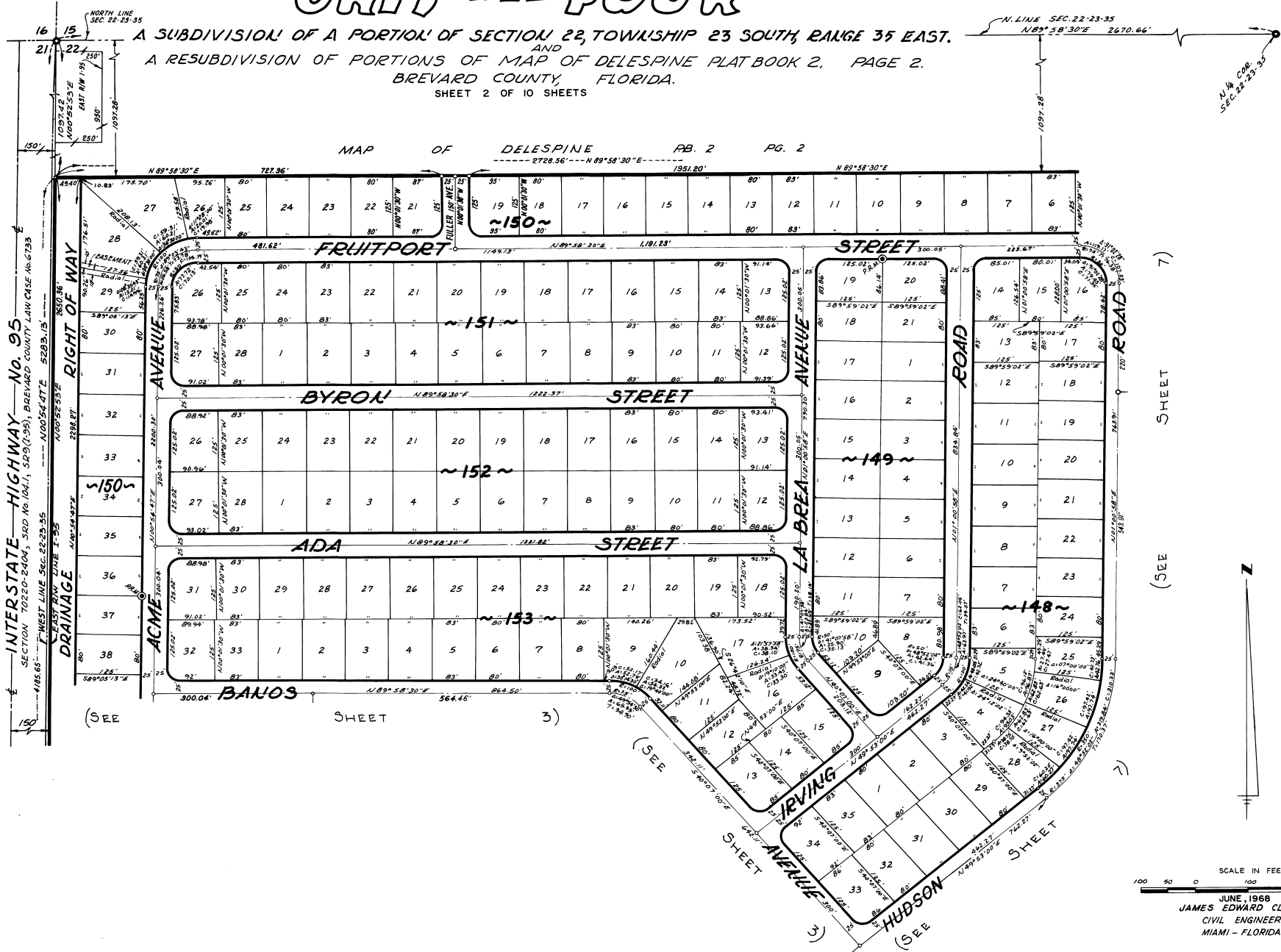


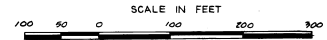
# PORT ST. JOHN UNIT -- FOUR

PLAT BOOK 22  
AND PAGE 37

A SUBDIVISION OF A PORTION OF SECTION 22, TOWNSHIP 23 SOUTH, RANGE 35 EAST.  
AND  
A RESUBDIVISION OF PORTIONS OF MAP OF DELESPINE PLAT BOOK 2, PAGE 2.  
BREVARD COUNTY, FLORIDA.  
SHEET 2 OF 10 SHEETS



CALC. BY: T.S.M.  
DRAWN BY: R.C.  
CHECKED BY: F.M.  
APPROVED BY: J.B.



JUNE, 1968  
JAMES EDWARD CLARK  
CIVIL ENGINEER  
MIAMI - FLORIDA