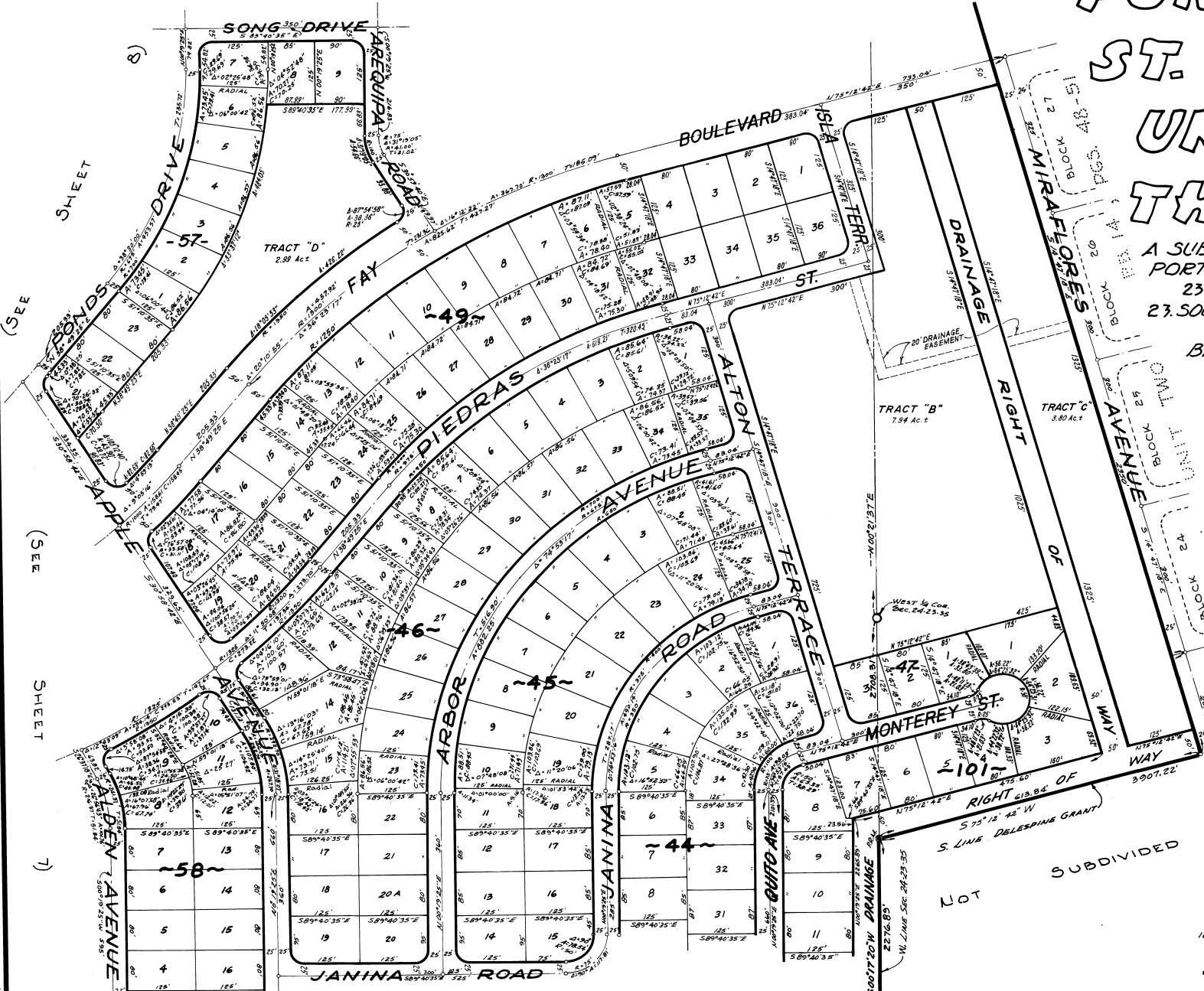
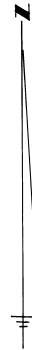


(SEE SHEET 9)

PORT ST. JOHN UNIT --- THREE

A SUBDIVISION OF
PORTIONS OF SECTIONS
23 & 24, TOWNSHIP
23 SOUTH, RANGE 35 EAST.

BREVARD COUNTY,
FLORIDA.



(SEE SHEET 8)
(SEE SHEET 7)

CALC. BY: *AMH*
DRAWN BY: *T. J. Madsen*
CHECKED BY: *J.B.*
APPROVED BY: *CGK*

(SEE SHEET 11)



JAMES EDWARD CLARK
CIVIL ENGINEER
MIAMI - FLORIDA