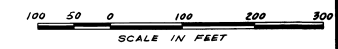
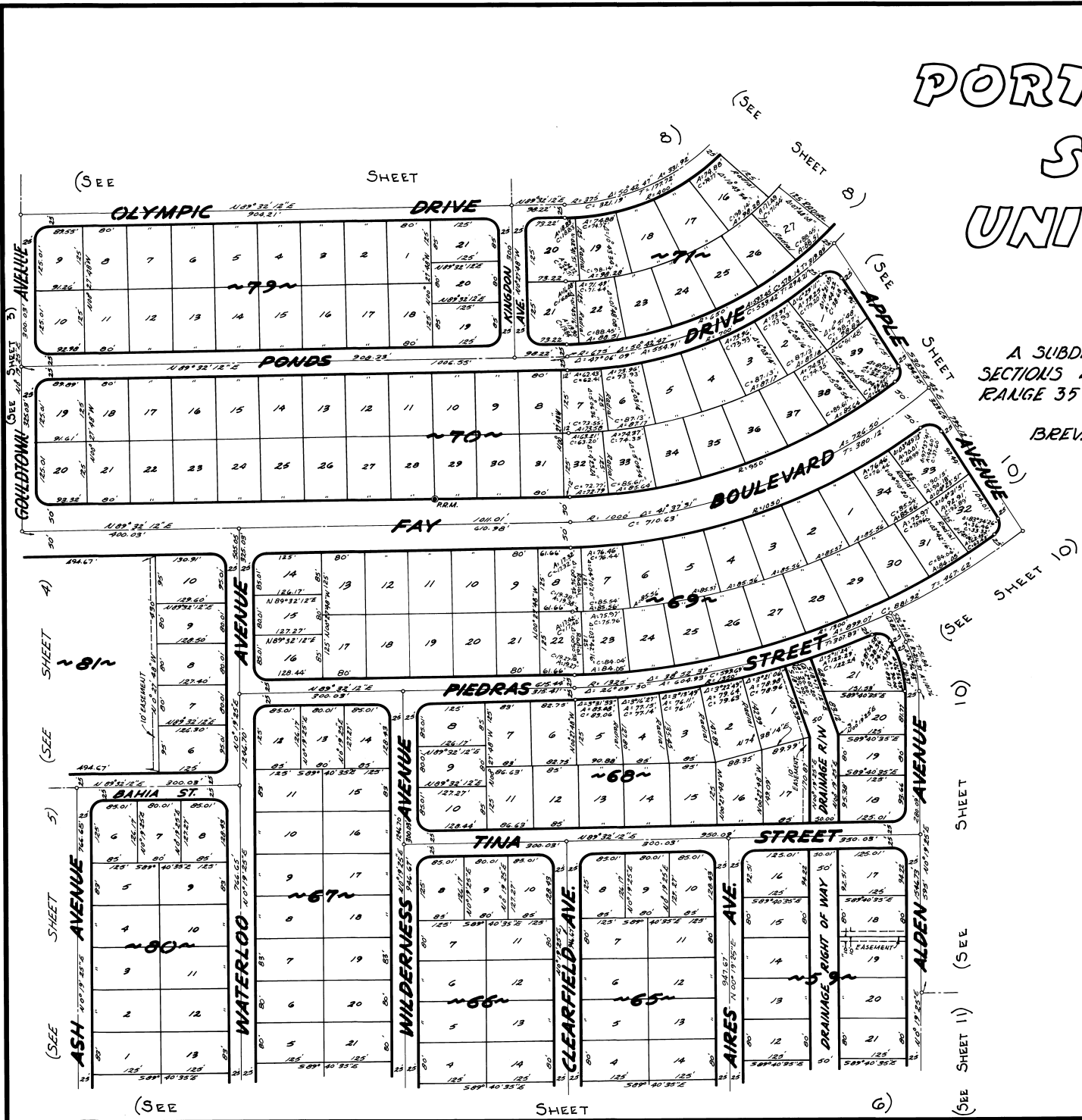


PORT ST. JOHN UNIT --- THREE

A SUBDIVISION OF PORTIONS OF
SECTIONS 23 & 24, TOWNSHIP 23 SOUTH,
RANGE 35 EAST.

BREVARD COUNTY, FLORIDA.



JAMES EDWARD CLARK
CIVIL ENGINEER
MIAMI - FLORIDA

CALC. BY: ANH
DRAWN BY: JMB
CHECKED BY: JB
APPROVED BY: COH