

PORT ST. JOHN

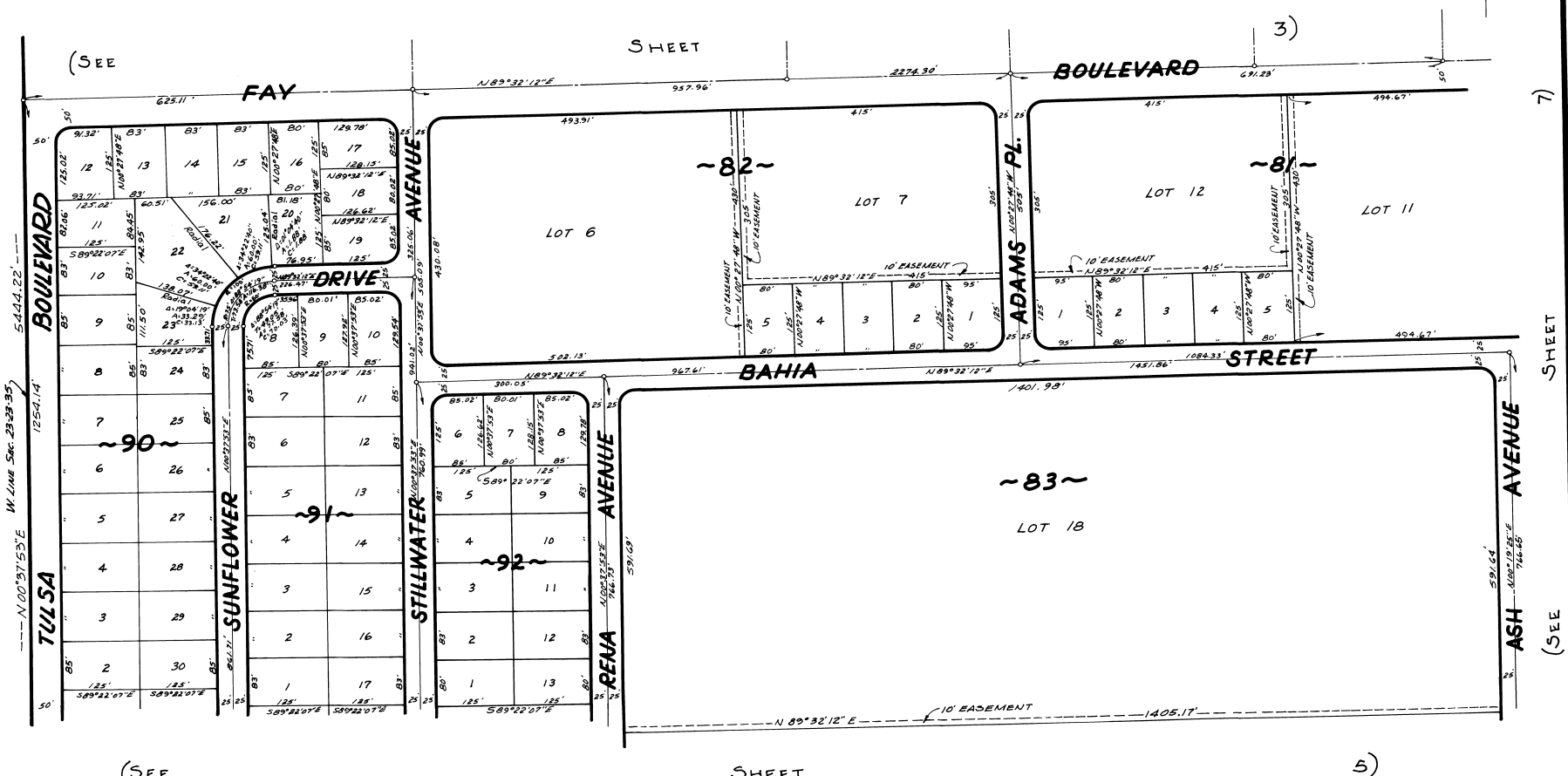
UNIT --- THREE

A SUBDIVISION OF PORTIONS OF SECTIONS 23 & 24, TOWNSHIP 23 SOUTH, RANGE 35 EAST.

BREVARD COUNTY, FLORIDA.

PLAT BOOK 22
AND PAGE 28

MAP OF DELESPINE P.B. 2 PG. 2



(SEE

SHEET

5)

SCALE IN FEET
100 0 100 200 300

JAMES EDWARD CLARK
CIVIL ENGINEER
MIAMI - FLORIDA

CALC. BY ANH
DRAWN BY e.c.g.
CHECKED BY JB
APPROVED BY CBH

SHEET 4 OF 11 SHEETS
74 LOTS THIS SHEET