

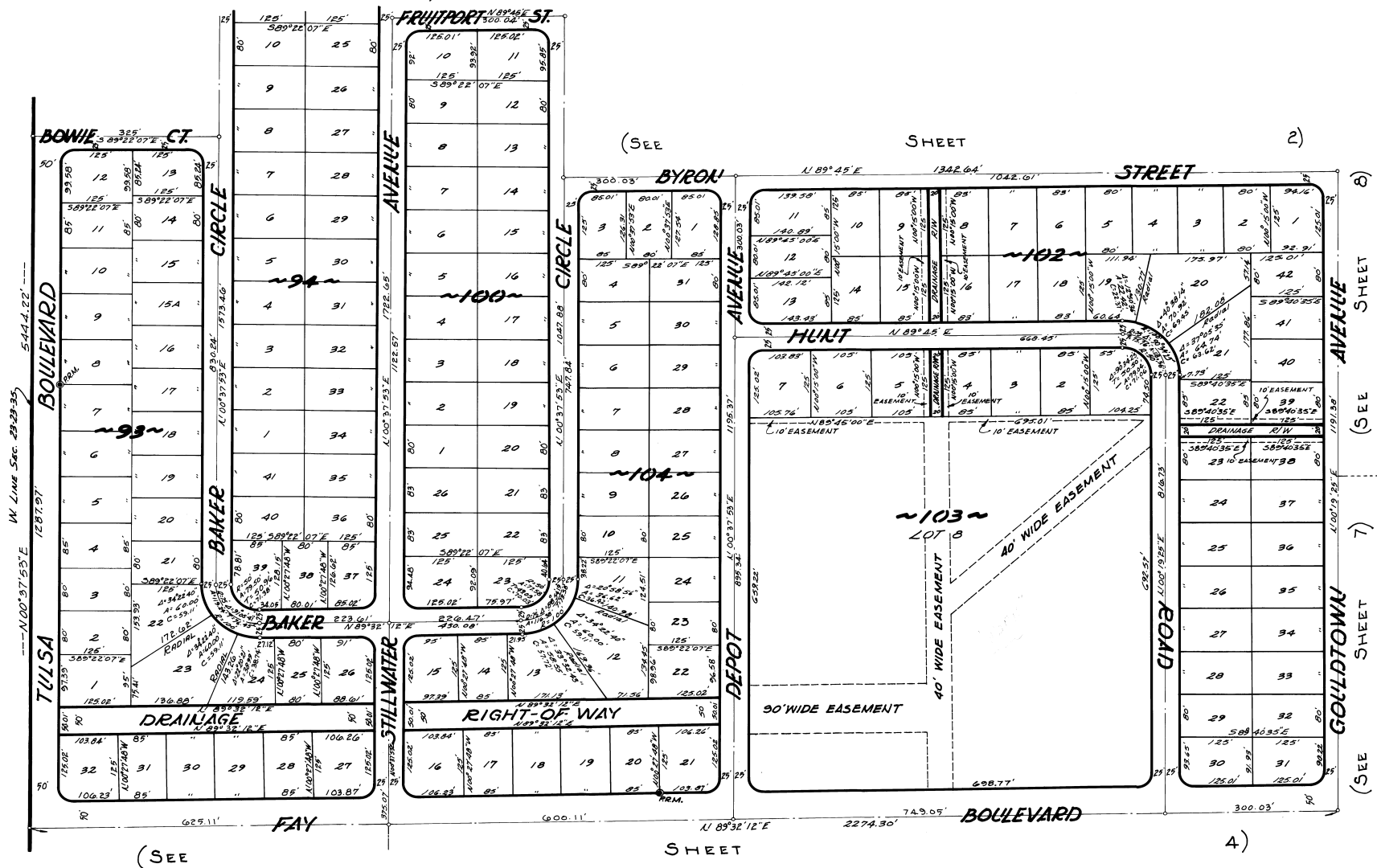
PORT ST. JOHN UNIT -- THREE

PLAT BOOK 22
AND PAGE 27

A SUBDIVISION OF PORTIONS OF SECTIONS 23 & 24, TOWNSHIP 23 SOUTH, RANGE 35 EAST.

(SEE SHEET 2) BREVARD COUNTY, FLORIDA.

MAP OF DELESPINE P.B. 2 PG. 2



(SEE SHEET 2) SHEET 4)

CALC. BY ANH
DRAWN BY H.K.F.
CHECKED BY JB
APPROVED BY CGK



JAMES EDWARD CLARK
CIVIL ENGINEER
MIAMI - FLORIDA