

# PORT ST. JOHN

## UNIT --- THREE

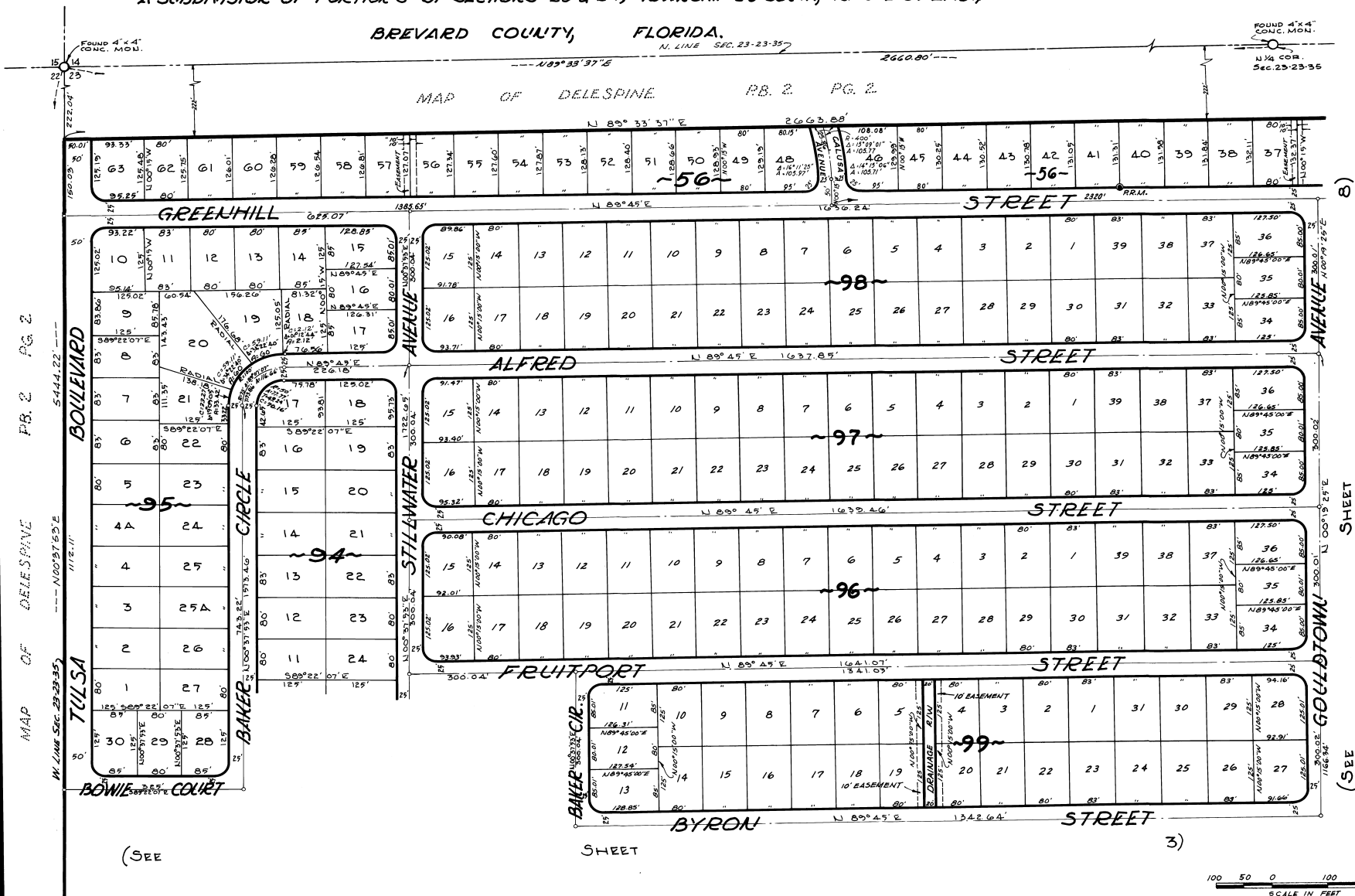
A SUBDIVISION OF PORTIONS OF SECTIONS 23 & 24, TOWNSHIP 23 SOUTH, RANGE 35 EAST,

BREVARD COUNTY, FLORIDA.

N. LINE SEC. 23-23-35

MAP OF DELESPINE PB. 2 PG. 2

PLAT BOOK 22  
AND PAGE 26



MAP OF DELESPINE PB. 2 PG. 2

(SEE

SHEET

3)

CALC. BY: AMH  
DRAWN BY: H.K.F.-RCA  
CHECKED BY: JB  
APPROVED BY: CGH



JAMES EDWARD CLARK  
CIVIL ENGINEER  
MIAMI - FLORIDA