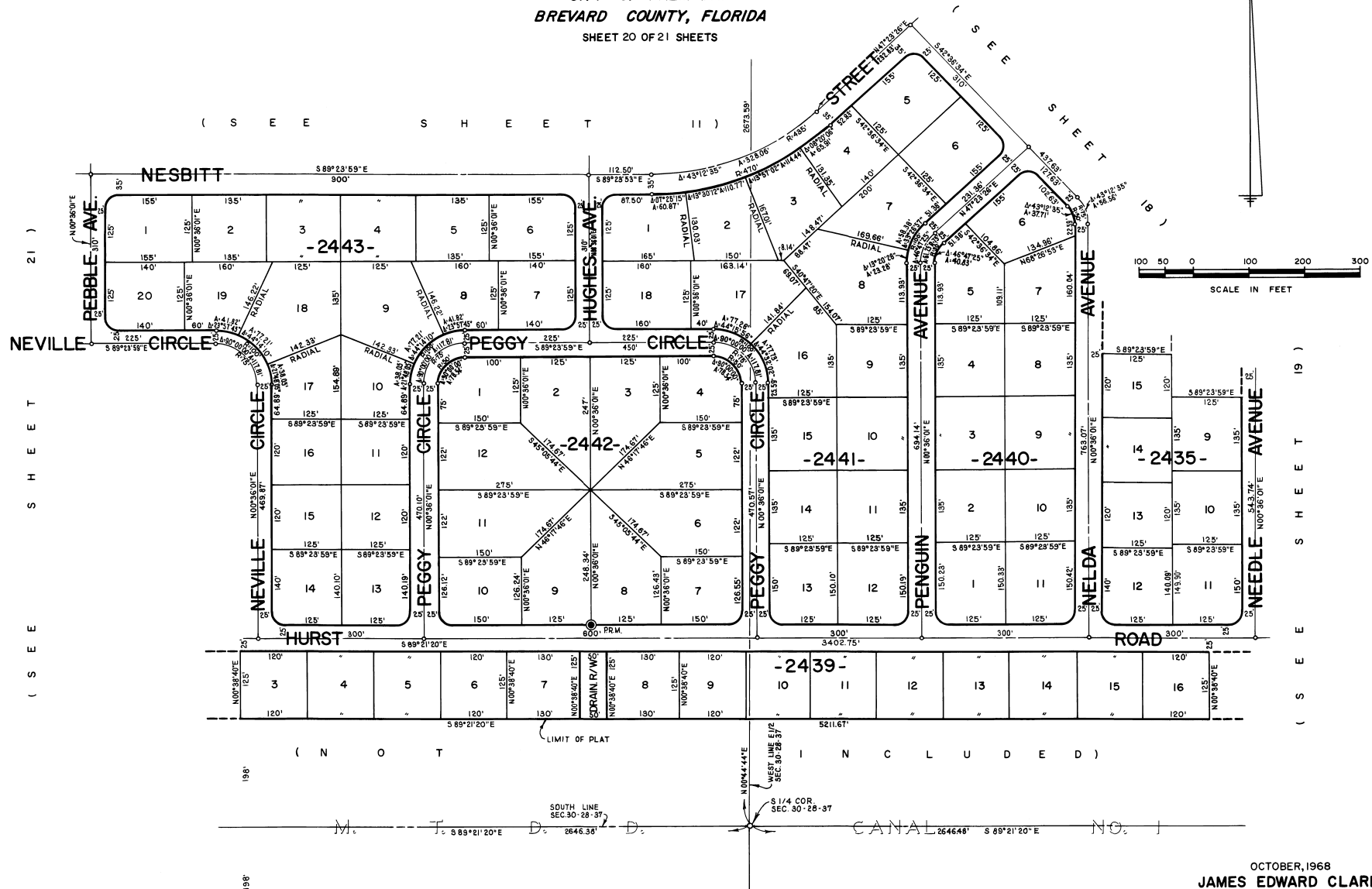


# PORT MALABAR UNIT FORTY FIVE

PLAT BOOK 22  
AND PAGE 22

A RESUBDIVISION OF A PORTION OF  
"FLORIDA INDIAN RIVER LAND COMPANY" IN  
SECTIONS 29 AND 30 TOWNSHIP 28 SOUTH, RANGE 37 EAST  
CITY OF PALM BAY  
BREVARD COUNTY, FLORIDA  
SHEET 20 OF 21 SHEETS



SHEET 21

SHEET 19

( N O T I N C L U D E D )

SOUTH LINE SEC. 30-28-37  
WEST LINE SEC. 30-28-37  
CANAL

CALCULATED BY M.M.M.  
DRAWN BY [Signature]  
CHECKED BY F.M.  
APPROVED BY [Signature]

OCTOBER, 1968  
JAMES EDWARD CLARK  
CIVIL ENGINEER  
MIAMI - FLORIDA