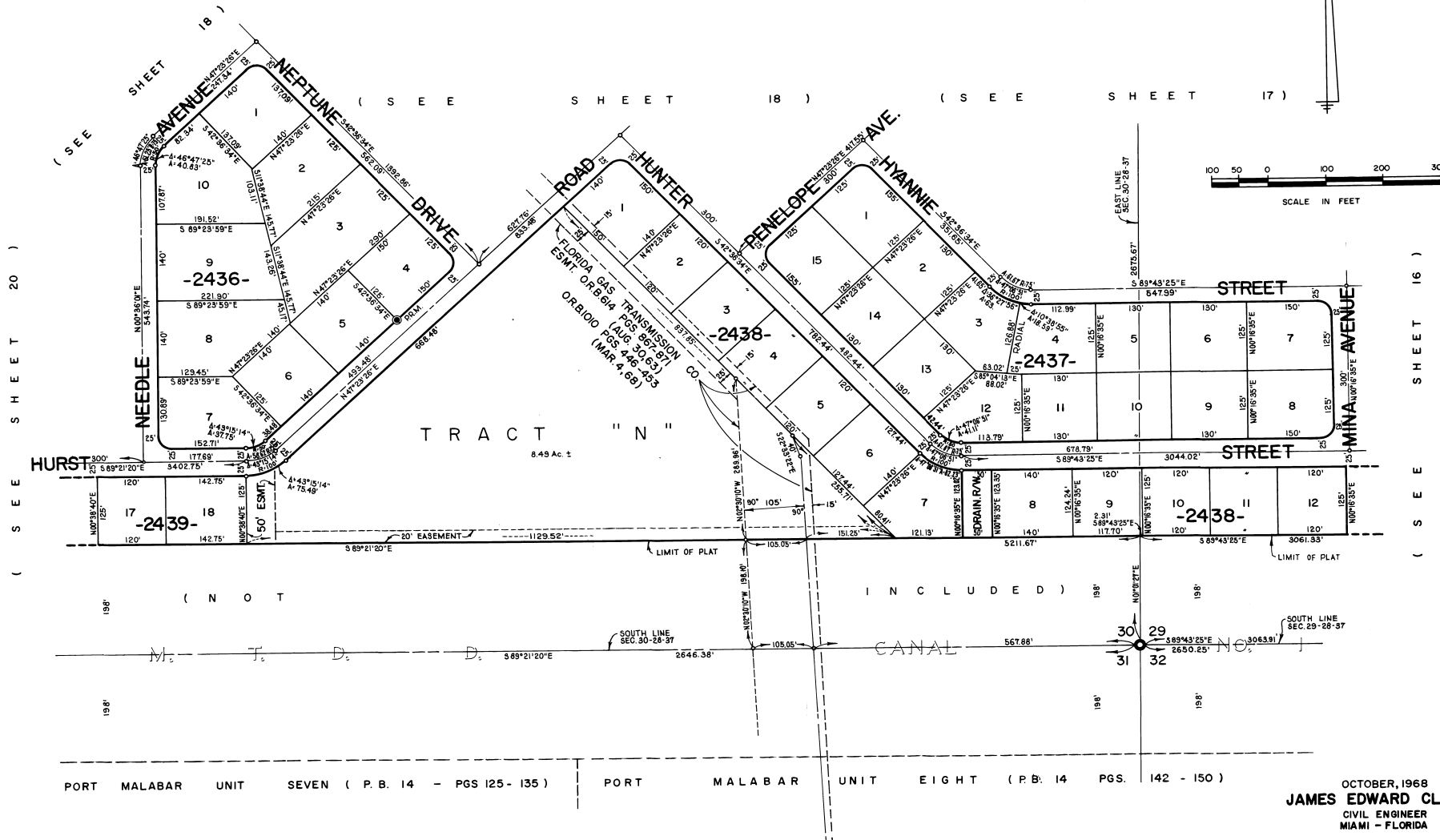
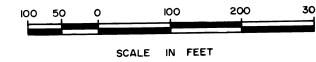


PORT MALABAR UNIT FORTY FIVE

PLAT BOOK 22
AND PAGE 21

A RESUBDIVISION OF A PORTION OF
"FLORIDA INDIAN RIVER LAND COMPANY" IN
SECTIONS 29 AND 30, TOWNSHIP 28 SOUTH, RANGE 37 EAST
CITY OF PALM BAY
BREVARD COUNTY, FLORIDA
SHEET 19 OF 21 SHEETS



PORT MALABAR UNIT SEVEN (P. B. 14 - PGS 125 - 135) PORT MALABAR UNIT EIGHT (P. B. 14 PGS. 142 - 150)

OCTOBER, 1968
JAMES EDWARD CLARK
CIVIL ENGINEER
MIAMI - FLORIDA

CALCULATED BY M.A.M.
DRAWN BY [Signature]
CHECKED BY [Signature]
APPROVED BY [Signature]

SHEET 19 OF 21 SHEETS
39 LOTS THIS SHEET