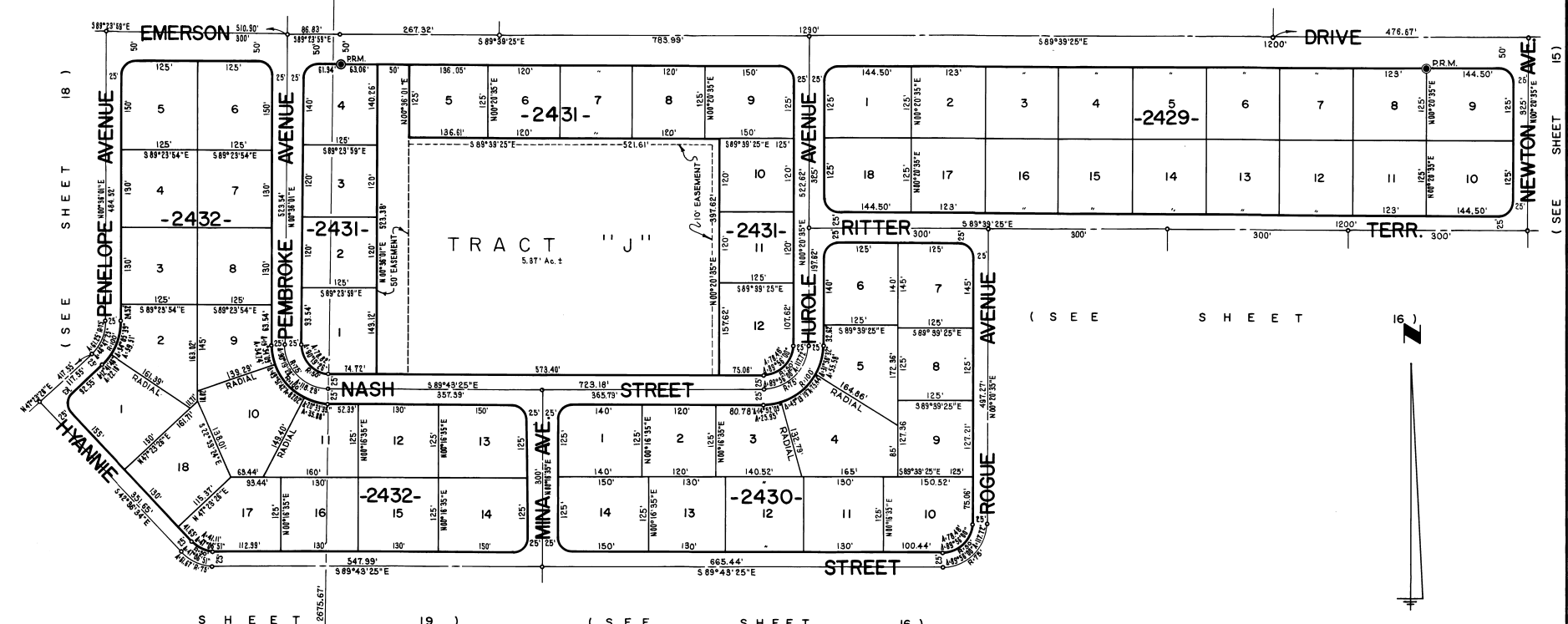


PORT MALABAR UNIT FORTY FIVE

A RESUBDIVISION OF A PORTION OF
"FLORIDA INDIAN RIVER LAND COMPANY" IN
SECTIONS 29 AND 30 TOWNSHIP 28 SOUTH, RANGE 37 EAST
CITY OF PALM BAY
BREVARD COUNTY, FLORIDA

SHEET 17 OF 21 SHEETS

(SEE SHEET 12) (S E E S H E E T 13) (SEE SHEET 14)

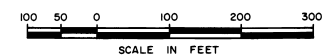


(SEE SHEET 18)

(SEE SHEET 15)

(SEE SHEET 16)

S H E E T 19) (SEE SHEET 16)



OCTOBER, 1968
JAMES EDWARD CLARK
CIVIL ENGINEER
MIAMI - FLORIDA

CALCULATED BY M.A.M.
DRAWN BY [Signature]
CHECKED BY F.E.U.

30 29
31 32

SHEET 17 OF 21 SHEETS
62 LOTS THIS SHEET