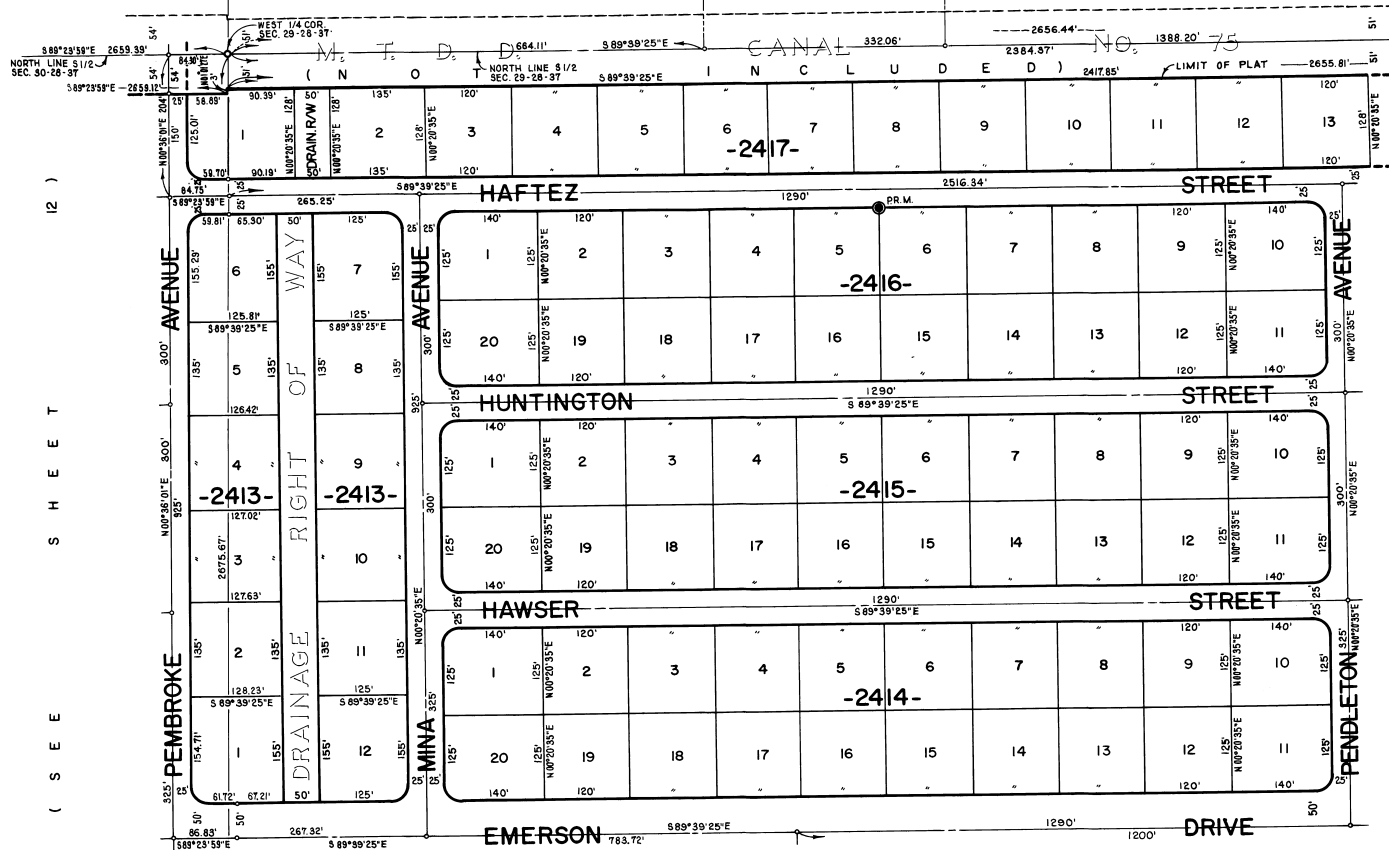


PORT MALABAR UNIT FORTY FIVE

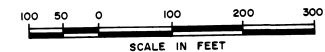
A RESUBDIVISION OF A PORTION OF
"FLORIDA INDIAN RIVER LAND COMPANY" IN
SECTIONS 29 AND 30 TOWNSHIP 28 SOUTH, RANGE 37 EAST
CITY OF PALM BAY
BREVARD COUNTY, FLORIDA
SHEET 13 OF 21 SHEETS

(S E E S H E E T 7) (S E E S H E E T 6)



(S E E S H E E T 12)

(S E E S H E E T 14)



(S E E S H E E T 17)

CALCULATED BY M.A.M.
DRAWN BY [Signature]
CHECKED BY [Signature]
APPROVED BY [Signature]

OCTOBER, 1968
JAMES EDWARD CLARK
CIVIL ENGINEER
MIAMI - FLORIDA

SHEET 13 OF 21 SHEETS
85 LOTS THIS SHEET