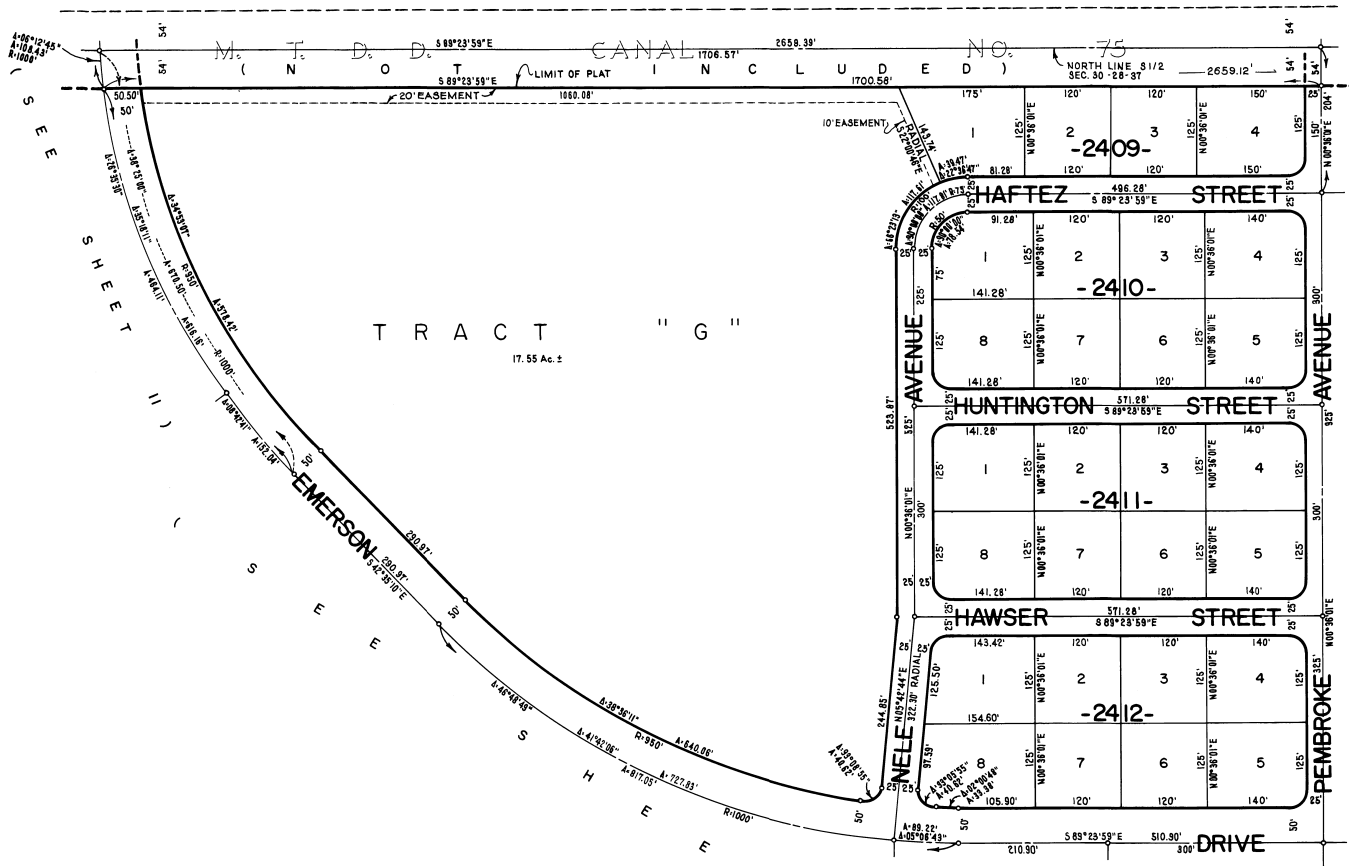


# PORT MALABAR UNIT FORTY FIVE

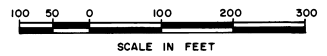
PLAT BOOK 22  
AND PAGE 14

A RESUBDIVISION OF A PORTION OF  
"FLORIDA INDIAN RIVER LAND COMPANY" IN  
SECTIONS 29 AND 30 TOWNSHIP 28 SOUTH, RANGE 37 EAST  
CITY OF PALM BAY  
BREVARD COUNTY, FLORIDA  
SHEET 12 OF 21 SHEETS

( S E E S H E E T 7 )



( S E E S H E E T 13 )



( SEE SHEET 17 )

OCTOBER, 1968  
**JAMES EDWARD CLARK**  
CIVIL ENGINEER  
MIAMI - FLORIDA

CALCULATED BY M.A.M.  
DRAWN BY [Signature]  
CHECKED BY [Signature]  
APPROVED BY [Signature]

SHEET 12 OF 21 SHEETS  
28 LOTS THIS SHEET