

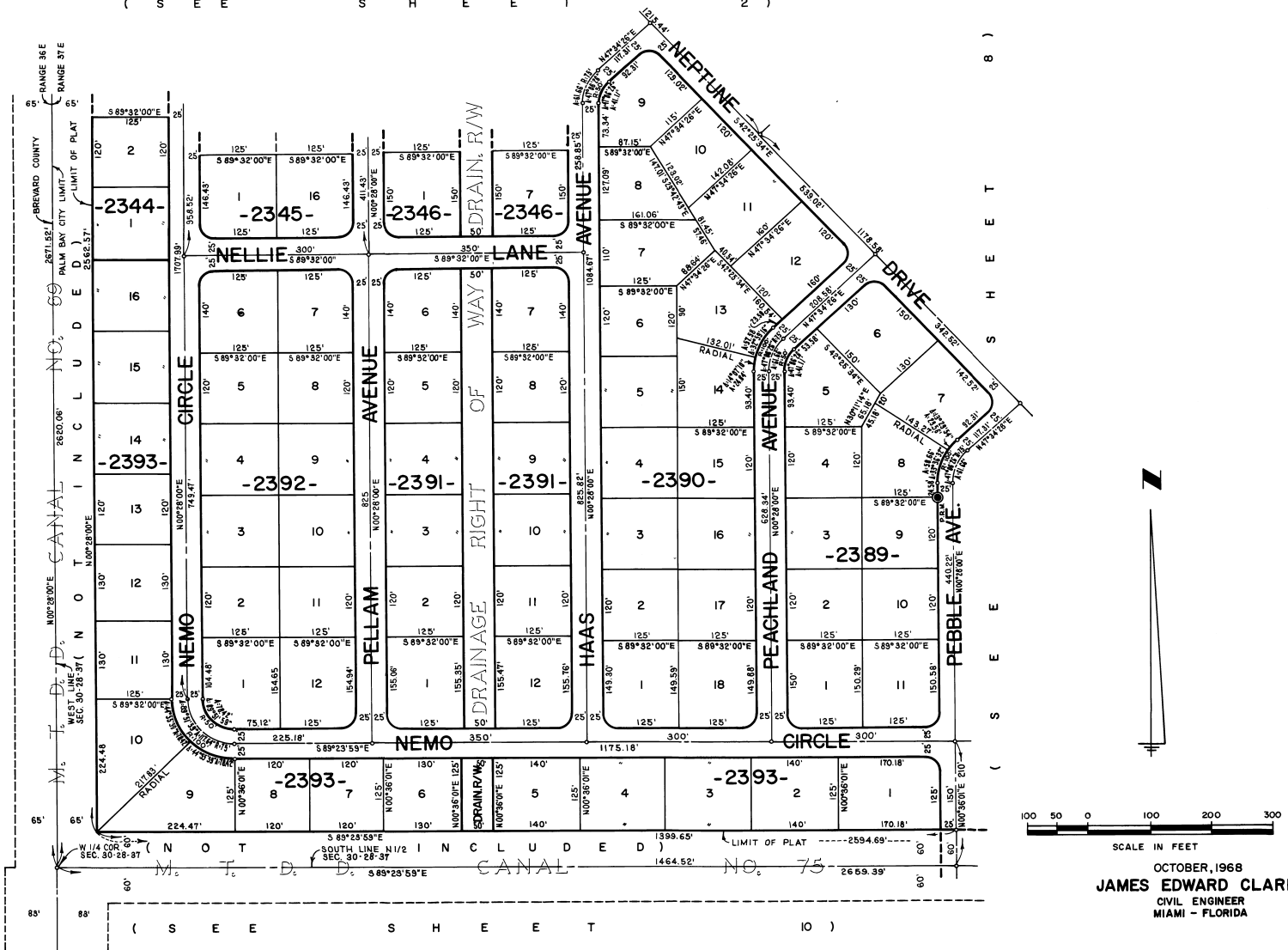
PORT MALABAR UNIT FORTY FIVE

PLAT BOOK 22
AND PAGE 11

A RESUBDIVISION OF A PORTION OF
"FLORIDA INDIAN RIVER LAND COMPANY" IN
SECTIONS 29 AND 30, TOWNSHIP 28 SOUTH, RANGE 37 EAST
CITY OF PALM BAY
BREVARD COUNTY, FLORIDA
SHEET 9 OF 21 SHEETS

(S E E S H E E T 2)

C A N A L N O T I N C L U D E D



(S E E S H E E T 10)

CALCULATED BY M.A.M.
DRAWN BY [Signature]
CHECKED BY [Signature]
APPROVED BY [Signature]

OCTOBER, 1968
JAMES EDWARD CLARK
CIVIL ENGINEER
MIAMI - FLORIDA

SHEET 9 OF 21 SHEETS
75 LOTS THIS SHEET