

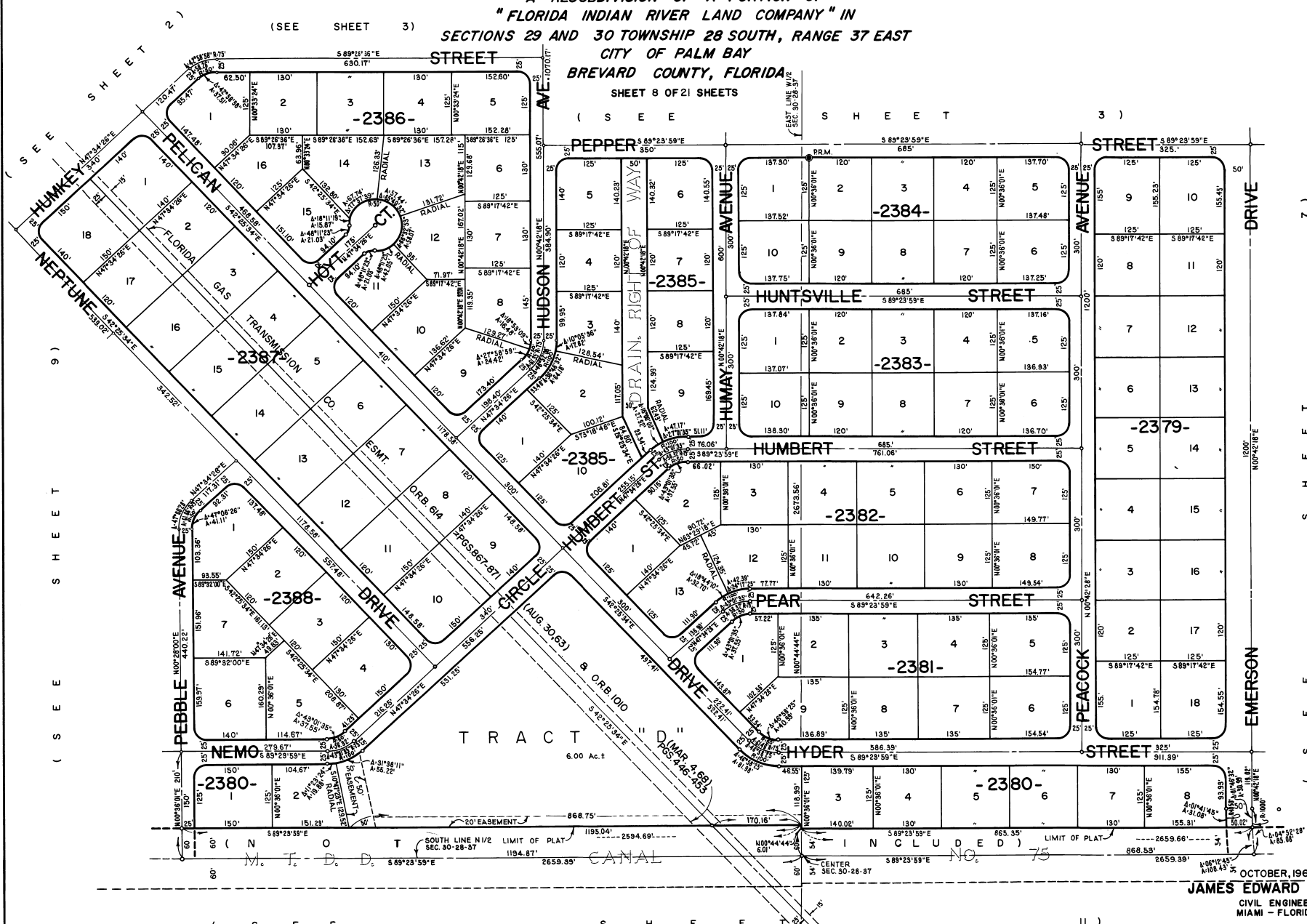
PORT MALABAR UNIT FORTY FIVE

PLAT BOOK 22
AND PAGE 10

A RESUBDIVISION OF A PORTION OF
"FLORIDA INDIAN RIVER LAND COMPANY" IN
SECTIONS 29 AND 30 TOWNSHIP 28 SOUTH, RANGE 37 EAST
CITY OF PALM BAY
BREVARD COUNTY, FLORIDA

SHEET 8 OF 21 SHEETS

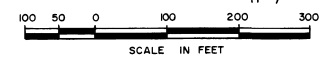
(S E E S H E E T 3)



(S E E S H E E T 7)



CALCULATED BY *M.M.M.*
DRAWN BY *[Signature]*
CHECKED BY *[Signature]*
APPROVED BY *[Signature]*



OCTOBER, 1968
JAMES EDWARD CLARK
CIVIL ENGINEER
MIAMI - FLORIDA

SHEET 8 OF 21 SHEETS
119 LOTS THIS SHEET