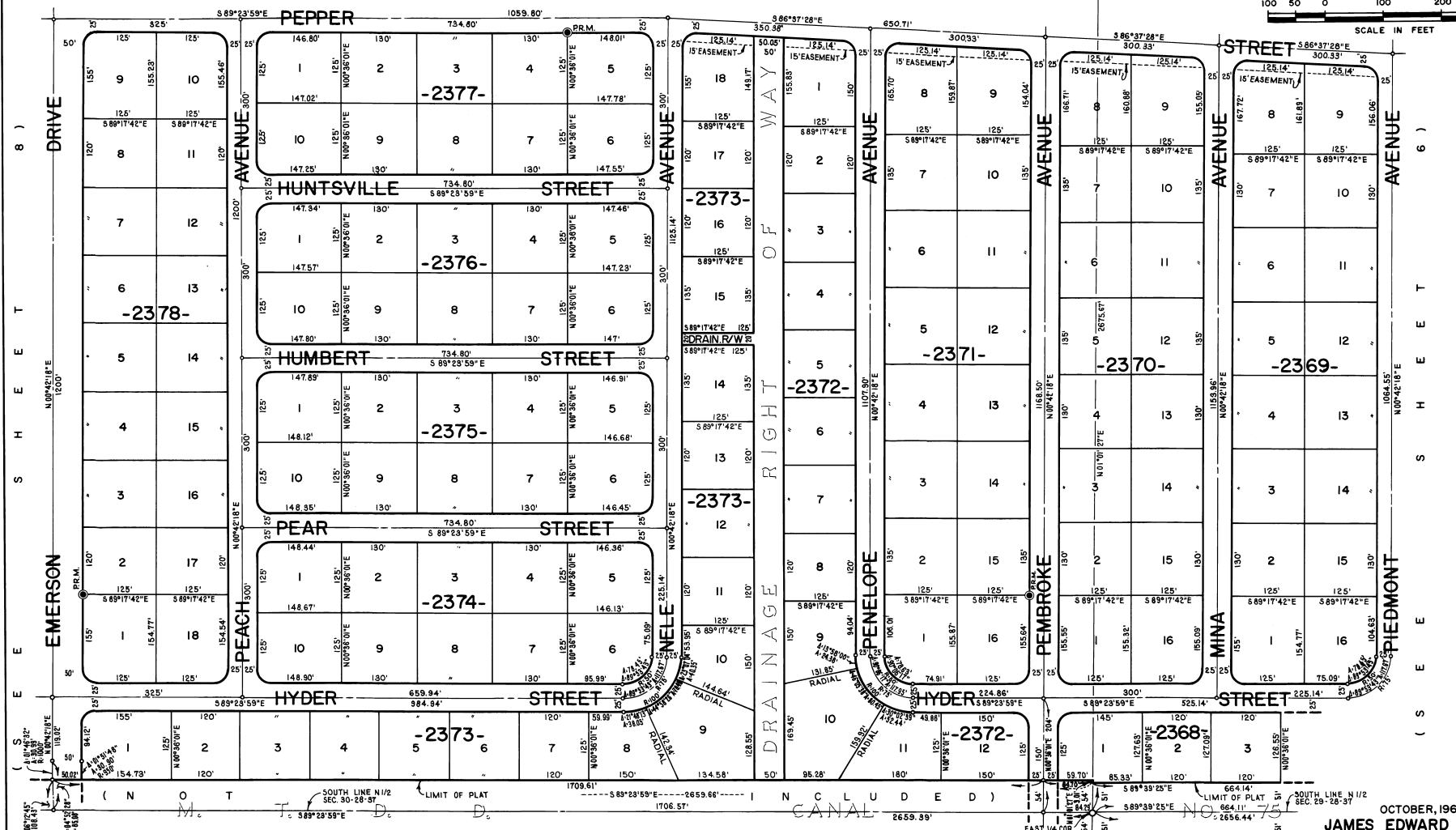
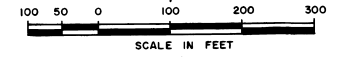


# PORT MALABAR UNIT FORTY FIVE

PLAT BOOK 22  
AND PAGE 9

A RESUBDIVISION OF A PORTION OF  
"FLORIDA INDIAN RIVER LAND COMPANY" IN  
SECTIONS 29 AND 30 TOWNSHIP 28 SOUTH, RANGE 37 EAST  
CITY OF PALM BAY  
BREVARD COUNTY, FLORIDA  
SHEET 7 OF 21 SHEETS

( S E E S H E E T 4 ) ( S E E S H E E T 5 )



CALCULATED BY M.M.M.  
DRAWN BY [Signature]  
CHECKED BY [Signature]  
APPROVED BY [Signature]

OCTOBER, 1968  
JAMES EDWARD CLARK  
CIVIL ENGINEER  
MIAMI - FLORIDA

SHEET 7 OF 21 SHEETS  
139 LOTS THIS SHEET