

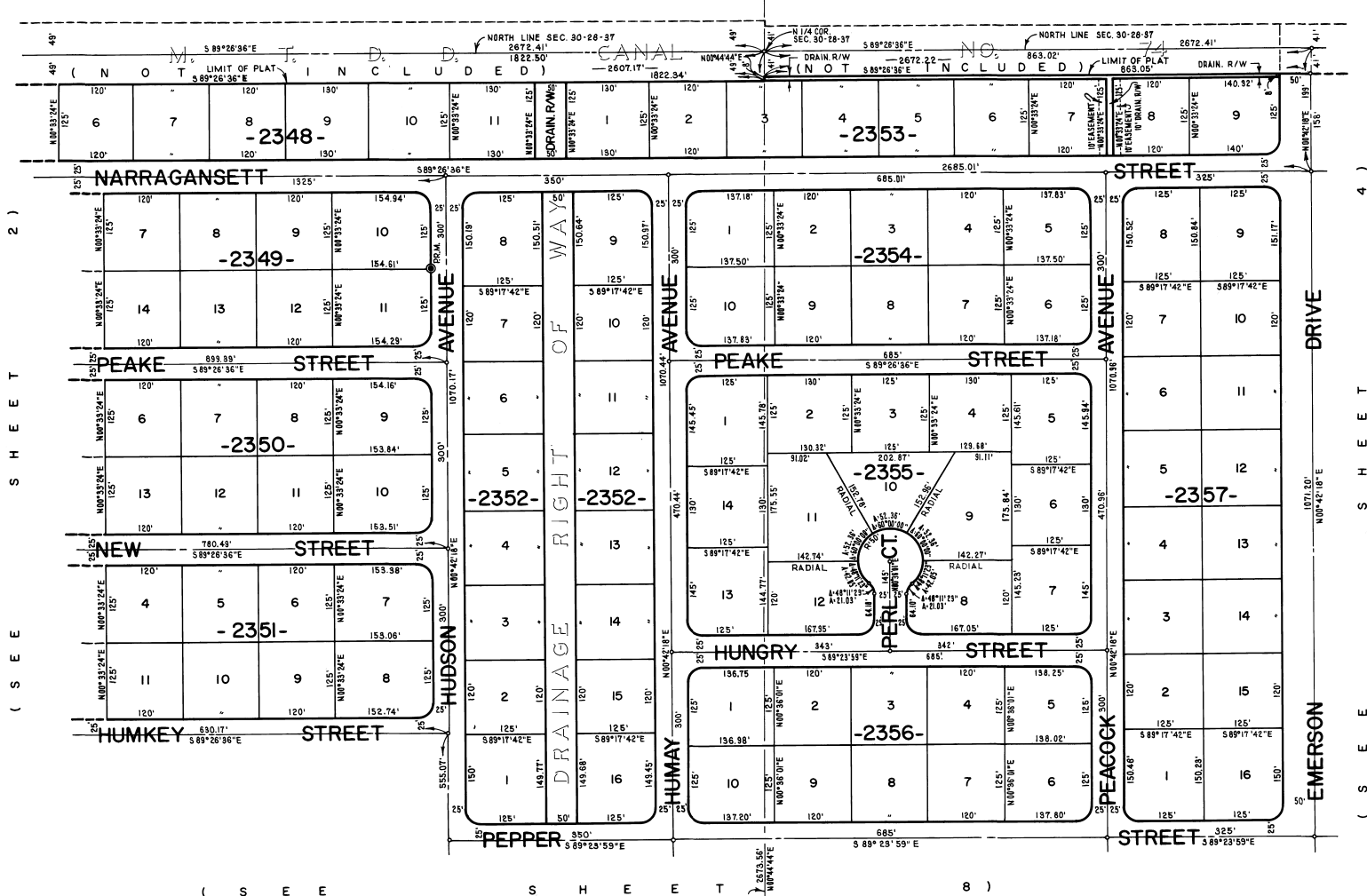
PORT MALABAR UNIT FORTY FIVE

PLAT BOOK 22
AND PAGE 5

A RESUBDIVISION OF A PORTION OF
"FLORIDA INDIAN RIVER LAND COMPANY" IN
SECTIONS 29 AND 30 TOWNSHIP 28 SOUTH, RANGE 37 EAST
CITY OF PALM BAY
BREVARD COUNTY, FLORIDA

SHEET 3 OF 21 SHEETS

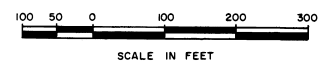
(PORT MALABAR UNIT TWENTY - ONE P.B. 15 PGS. 140 - 146)



SHEET 2

SHEET 4

(S E E S H E E T 8)



OCTOBER, 1968
JAMES EDWARD CLARK
CIVIL ENGINEER
MIAMI - FLORIDA

CALCULATED BY M.H.M.
DRAWN BY (Signature)
CHECKED BY J.M.
APPROVED BY (Signature)

SHEET 3 OF 21 SHEETS
105 LOTS THIS SHEET