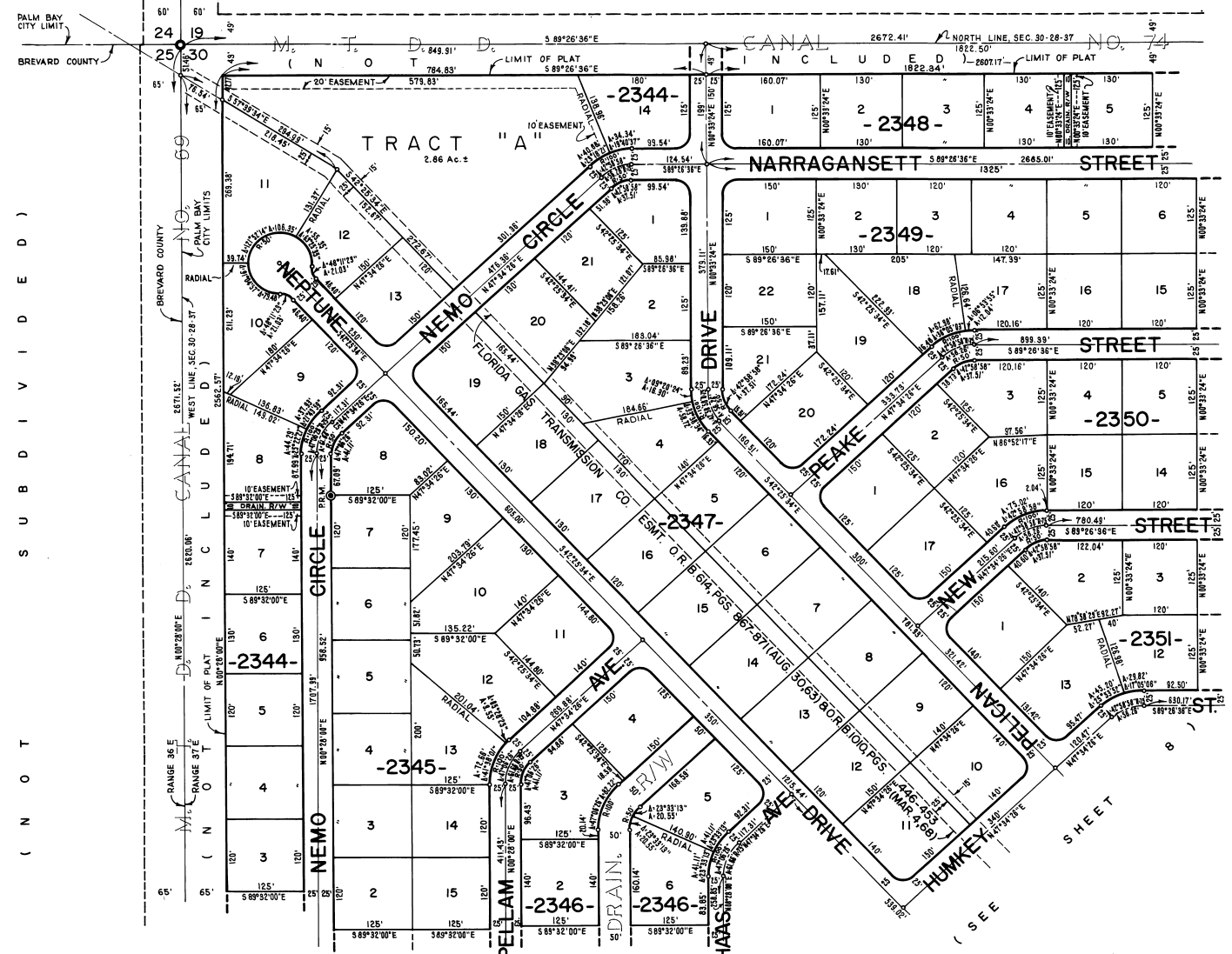


PORT MALABAR UNIT FORTY FIVE

PLAT BOOK 22
AND PAGE 4

A RESUBDIVISION OF A PORTION OF
"FLORIDA INDIAN RIVER LAND COMPANY" IN
SECTIONS 29 AND 30, TOWNSHIP 28 SOUTH, RANGE 37 EAST
CITY OF PALM BAY
BREVARD COUNTY, FLORIDA
SHEET 2 OF 21 SHEETS

(PORT MALABAR UNIT TWENTY - ONE P.B. 15 PGS. 140 - 146)



(S E E T S H E E T 3)



SCALE IN FEET
0 50 100 200 300

OCTOBER, 1968
JAMES EDWARD CLARK
CIVIL ENGINEER
MIAMI - FLORIDA

CALCULATED BY M.A.M.
DRAWN BY [Signature]
CHECKED BY F.C.J.
APPROVED BY J.B.

SHEET 2 OF 21 SHEETS
85 LOTS THIS SHEET