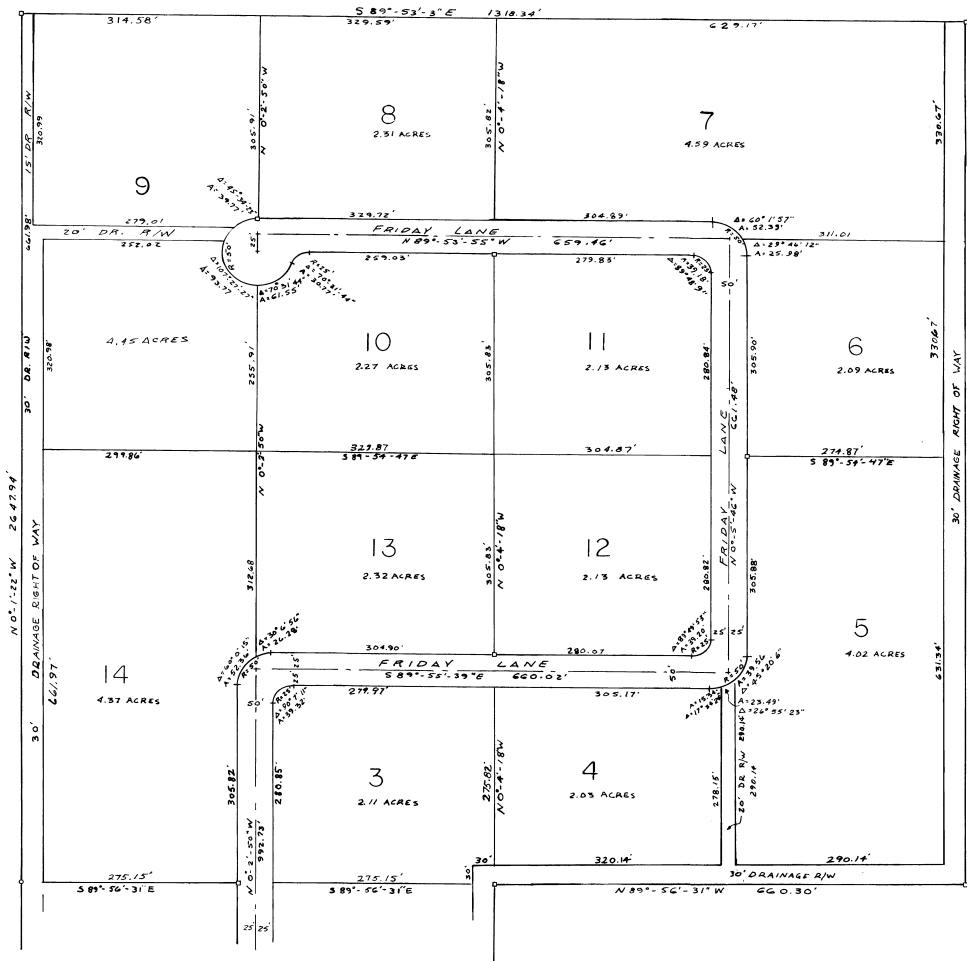


PINE LAKE RANCH



NOTES

- (1) □ Denotes Permanent Reference Monument
- (2) Distances on corner lots are to the intersection of block lines extended unless otherwise noted.
- (3) A 5' Public Utility & Drainage Easement is reserved along all side and rear lot lines unless otherwise noted. When adjoining lots are purchased under one Owner, the Easements on the line common to both lots shall revert to the Purchaser.
- (4) No further subdivision of the lots shown into areas of less than 2 1/2 acres will be permitted except by special action of the Board of County Commissioners. The 2 1/2 acre area shall include the adjacent Street Right-of-Way, and Drainage Right-of-Way.

IN ACCEPTANCE OF THIS PLAT THE COUNTY ASSUMES NO RESPONSIBILITY FOR CONSTRUCTING, BUILDING, ALTERING, OR MAINTAINING THE STREETS AND NECESSARY DRAINAGE FACILITIES FOR THE LANDS SHOWN HEREON