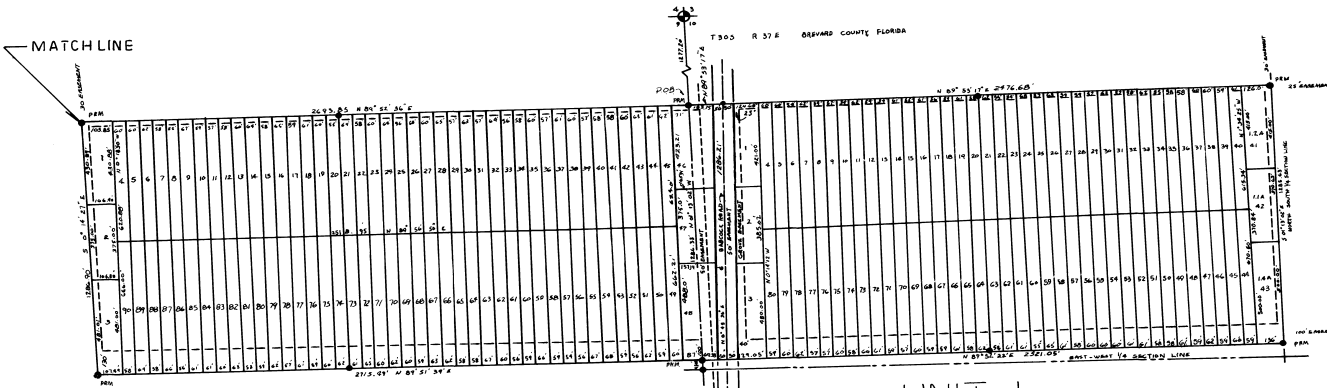


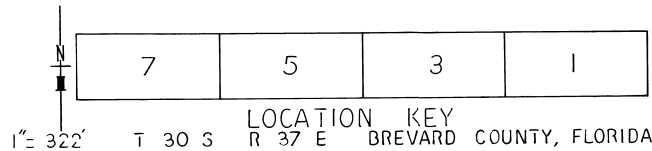
THIS IS AN AGRICULTURAL PLAT RESTRICTED TO AGRICULTURE USE ONLY.
ALL LOTS DEPICTED ARE SUB-STANDARD FOR RESIDENTIAL PURPOSES

Brevard County accepts filing of this plat subject to the following: (a) Brevard County does not accept the easements described on the plat for public use and assumes no obligation to maintain said easements. (b) No portion of this plat will be re-zoned for any other use nor will any building permits be issued by the Brevard County Zoning Department unless standard plat and subdivision requirements are met. (c) Recording of this plat is for the convenience of the Tax Assessor and shall in no way be construed to impose any obligation of Brevard County to provide roads, drainage or changes in zoning.

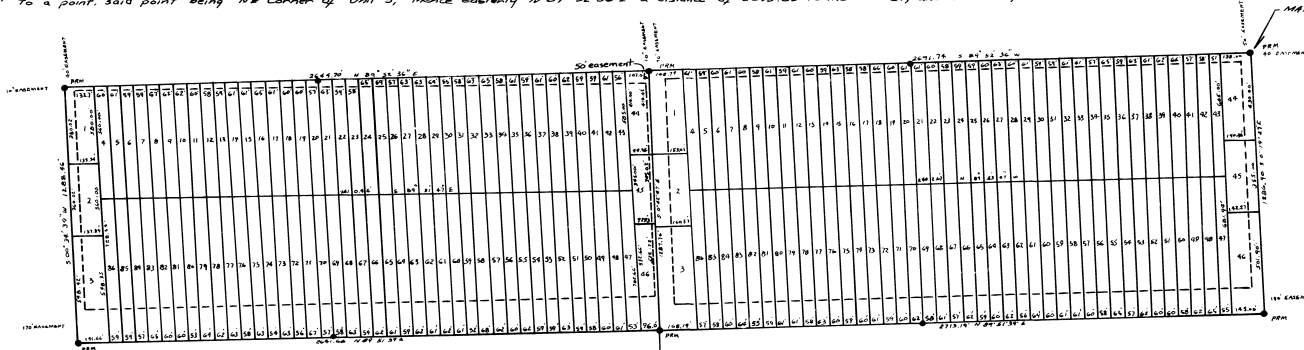


UNIT 3
PART OF 1/2 OF NE 1/4 OF SEC 9 T30S R37E

UNIT 1
PART OF 1/2 OF NW 1/4 OF SEC 10 T 30 S R 37 E



Legal: Commencing at the NE corner of Section 9 T30S R37E Brevard County, Florida, thence southerly 3 01' 13' 02" E a distance of 1277.20' to the P.O.B., thence run easterly N89°55'17" E a distance of 153.75' to a point, said point being NW corner of Unit 1 and also E of Babcock road, thence run easterly N89°55'17" E a distance of 2776.68' to a point, said point being NE corner of Unit 1, thence run southerly 3 01' 13' 02" E a distance of 1285.65' to a point, said point being SE corner of Unit 1, thence run westerly S89°52'22" W a distance of 2521.05' to a point, said point being SW corner of Unit 1 and also E of Babcock road, thence run westerly S89°52'22" W a distance of 109.38' to a point, thence run west only S89°52'39" W a distance of 2712.99' to a point, said point being SW corner of Unit 3, thence run westerly S 89°51'59" W a distance of 4215.19' to a point, said point being SW corner of Unit 3, thence run westerly S 89°51'09" W a distance of 4541.66' to a point, said point being SW corner of Unit 7, thence run northerly N 60° 36' 59" E a distance of 1508.46' to a point, said point being NW corner of Unit 7, thence run easterly N89°52'36" E a distance of 2644.70' to a point, said point being NE corner of Unit 7, thence run easterly N 89° 52' 36" E a distance of 2691.74' to a point, said point being NE corner of Unit 5, thence easterly N 89° 52' 36" E a distance of 2693.85' to the P.O.B., and containing 311.35 acres ±.



UNIT 7
PART OF 1/2 OF NE 1/4 OF SEC 8 T30S R37E

UNIT 5
PART OF 1/2 OF NW 1/4 OF SEC 9 T 30 S R 37 E

PLOT PLANS OF SUNSHINE GROVE

BY WOOD AND ASSOCIATES, INC.
FORT PIERCE, FLORIDA

SCALE IN FEET
0 100 200

PLAT BOOK 21
AND PAGE 78

DEDICATION
KNOW ALL MEN BY THESE PRESENTS, That the Corporation named below, being the owner in fee simple of the lands described in the foregoing caption to this plat, hereby dedicates said lands and plat for the uses and purposes therein expressed and dedicates the Streets, alleys, thoroughfares, parks, canals and drainage easements shown hereon to the perpetual use of the OWNERS, AND IN WITNESS WHEREOF, has caused these presents to be signed and attested by the officers named below and its corporate seal to be affixed hereto on OCTOBER 10, 1967.

By: James J. ... Florida Orange Grove Properties, Inc. President
Attest: ... Secretary

Signed and sealed in the presence of:
...
...

STATE OF Florida COUNTY OF St. Lucie
THIS IS TO CERTIFY, That on OCTOBER 10, 1967, before me, an officer duly authorized to take acknowledgments in the State and County aforesaid, personally appeared JAMES J. ... and ROBERT ... respectively, President and Secretary of the above named corporation incorporated under the laws of the State of Florida, to me known to be the individuals and officers described in and who executed the foregoing Dedication and severally acknowledged the execution thereof to be their free act and deed as such officers thereto duly authorized; that the official seal of said corporation is duly affixed thereto; and that the said Dedication is the act and deed of said corporation.
IN WITNESS WHEREOF, I have hereto set my hand and seal on the above date.
... Notary Public
My Commission Expires Jan. 21, 1969

CERTIFICATE OF SURVEYOR
KNOW ALL MEN BY THESE PRESENTS, That the undersigned, being a licensed and registered land surveyor, does hereby certify that on OCTOBER 10, 1967, he completed the survey of the lands as shown in the foregoing plat; that said plat is a correct representation of the lands therein described and platted; that permanent reference monuments have been placed as shown thereon as required by Chapter 177, Florida Statutes; and that said land is located in Brevard County, Florida. Dated OCTOBER 10, 1967.
... Registration No. 2089

CERTIFICATE OF APPROVAL BY MUNICIPALITY
THIS IS TO CERTIFY, That on ... the ... approved the foregoing plat.
SEAL
ATTEST: ... Mayor
... City Clerk

CERTIFICATE OF APPROVAL BY BOARD OF COUNTY COMMISSIONERS
THIS IS TO CERTIFY, That on NOVEMBER 2, 1967, the foregoing plat was approved by the Board of County Commissioners of Brevard County, Florida.
Attest: ... Chairman of the Board
... Clerk of the Board
Approved: ... County Engineer

CERTIFICATE OF APPROVAL BY ZONING COMMISSION
THIS IS TO CERTIFY, That on NOVEMBER 2, 1967, the Zoning Commission of the above Municipality approved the foregoing plat.
... Zoning Director

CERTIFICATE OF CLERK
I HEREBY CERTIFY, That I have examined the foregoing plat and find that it complies in form with all the requirements of Chapter 177, Florida Statutes, and was filed for record on NOVEMBER 13, 1967, at 10:35 A.M. File No. ...
... Clerk of the Circuit Court
in and for Brevard County, Fla.