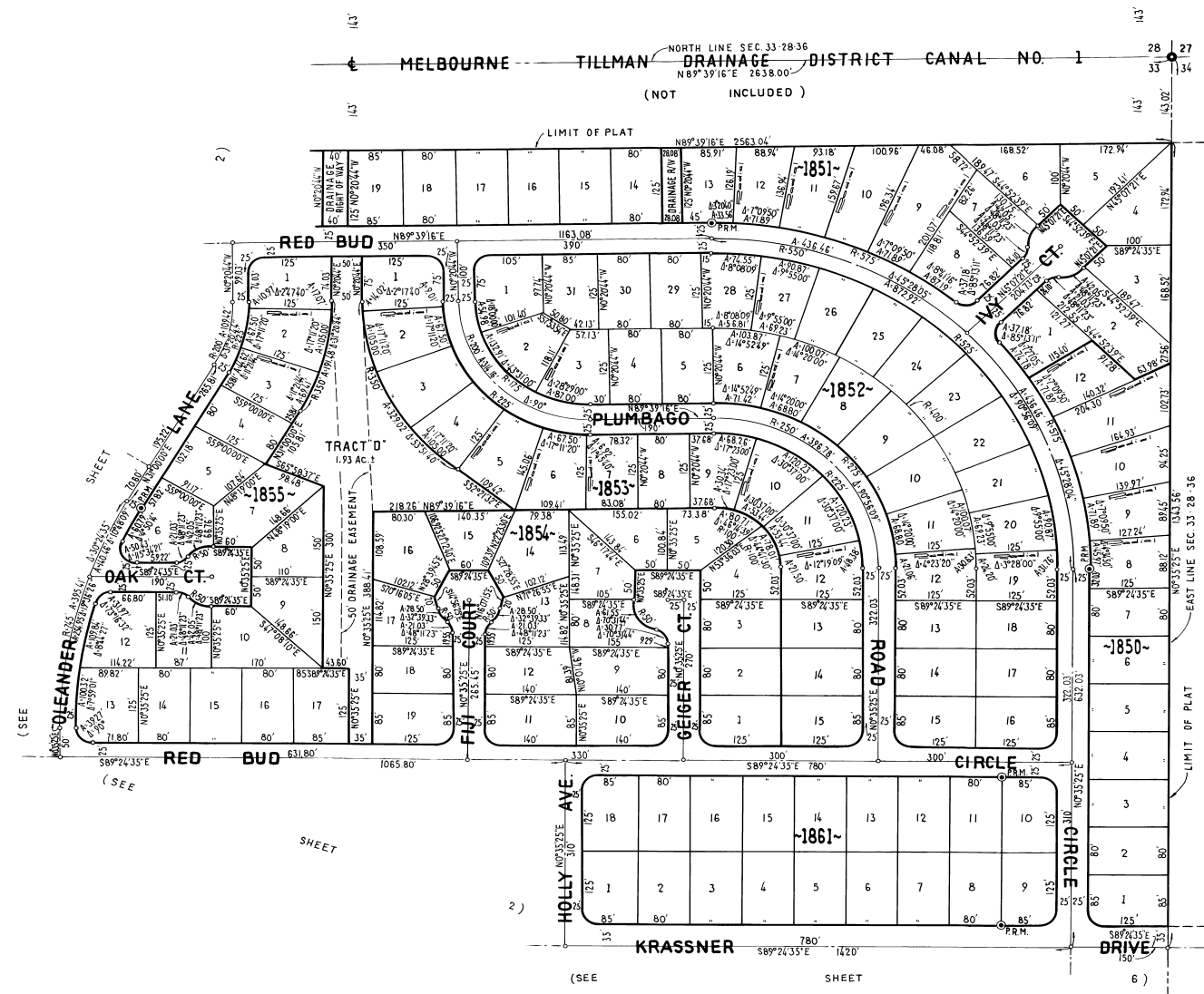
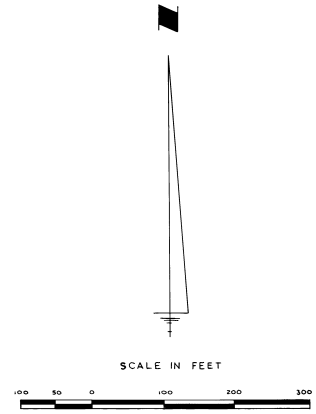


# PORT MALABAR UNIT FORTY ONE

A SUBDIVISION OF A PORTION OF SECTION 33  
TOWNSHIP 28 SOUTH, RANGE 36 EAST  
(NOT SUBDIVIDED)  
CITY OF PALM BAY, BREVARD COUNTY, FLORIDA  
SHEET 7 OF 7 SHEETS



P.S.  
P.B.  
THIRTY NINE  
UNIT  
MALABAR  
PORT



CALC. BY: S.P.  
DRAWN BY: E.A.  
CHECKED BY: E.C.M.  
APPROVED BY: J.E.C.

JAMES EDWARD CLARK  
CIVIL ENGINEER  
MIAMI - FLORIDA  
131 LOTS THIS SHEET - SHEET 7 OF 7 SHEETS