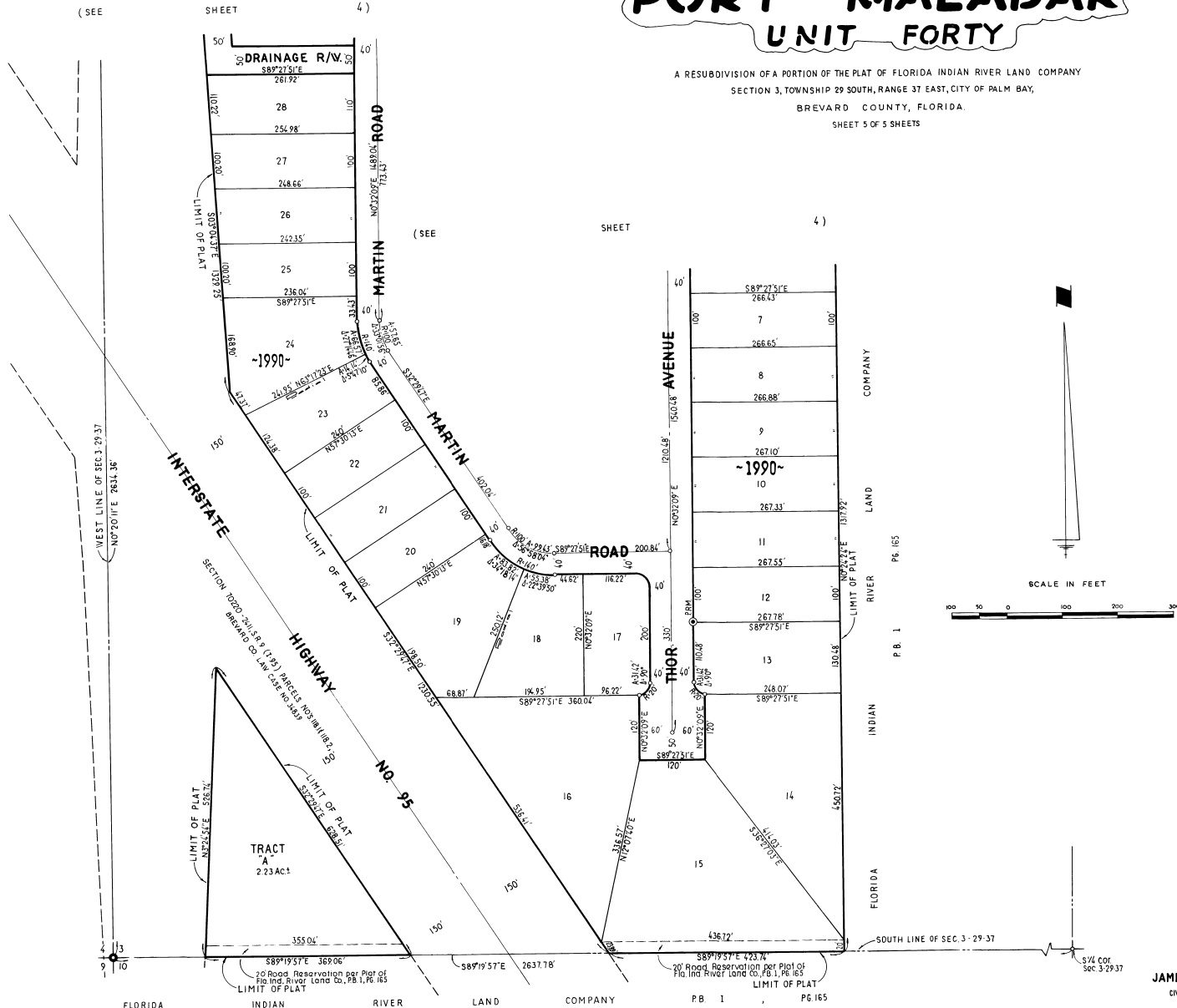


PORT MALABAR UNIT FORTY

A RESUBDIVISION OF A PORTION OF THE PLAT OF FLORIDA INDIAN RIVER LAND COMPANY
SECTION 3, TOWNSHIP 29 SOUTH, RANGE 37 EAST, CITY OF PALM BAY,
BREVARD COUNTY, FLORIDA
SHEET 5 OF 5 SHEETS



(SEE

SHEET

4)

(SEE

SHEET

4)

SCALE IN FEET



CALL BY: S.P.
DRAWN BY: G.A.
CHECKED BY: S.P.
APPROVED BY: J.B.

JAMES EDWARD CLARK
CIVIL ENGINEER
MIAMI - FLORIDA
22 LOTS THIS SHEET SHEET 5 OF 5 SHEETS