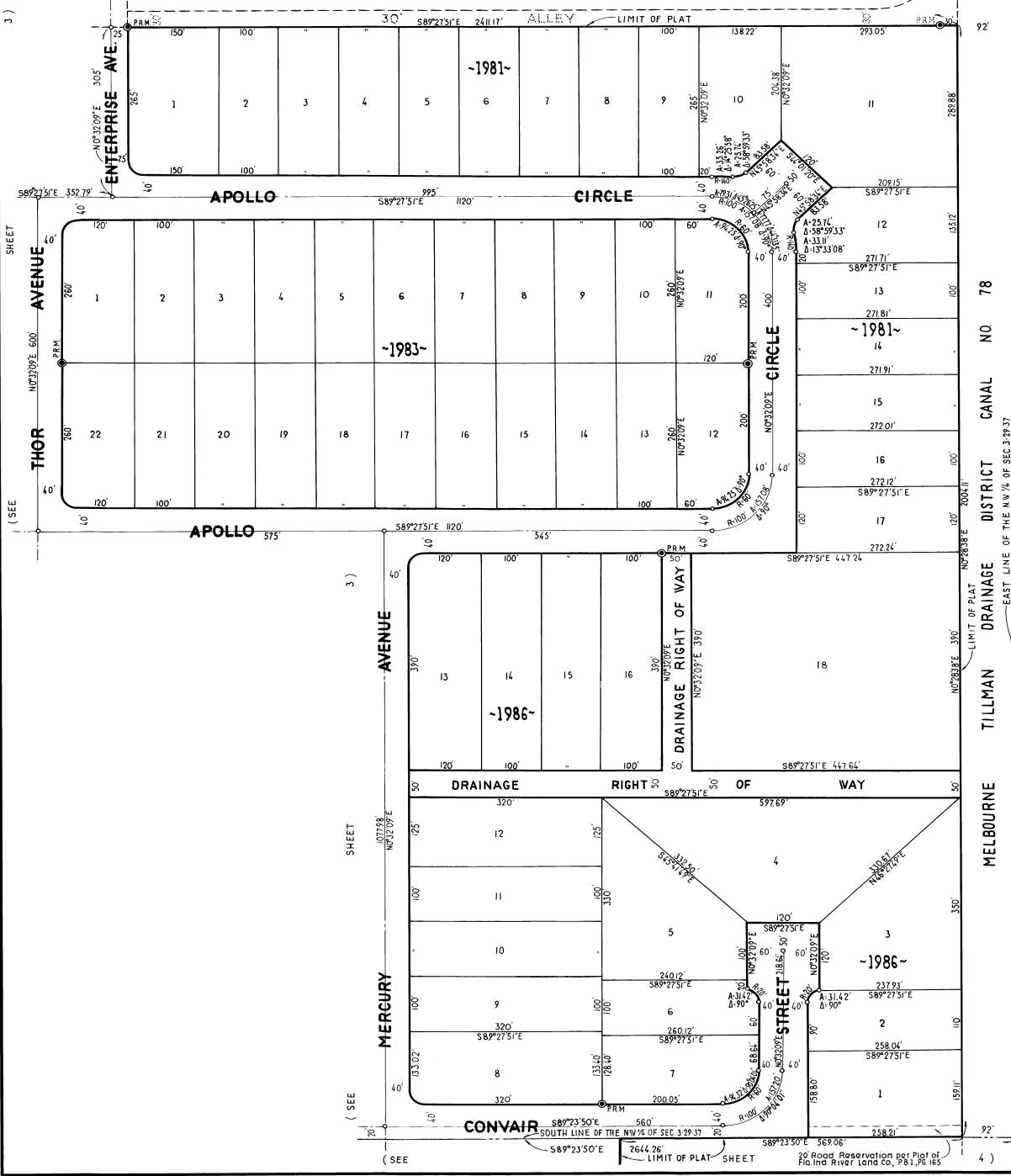


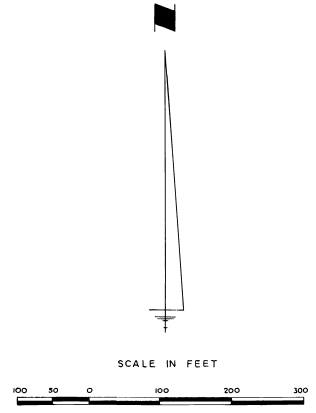
PORT MALABAR UNIT THIRTY EIGHT P.B. 20 PGS. 117 & 118



# PORT MALABAR UNIT FORTY

A RESUBDIVISION OF A PORTION OF THE PLAT OF FLORIDA INDIAN RIVER LAND COMPANY  
SECTION 3, TOWNSHIP 29 SOUTH, RANGE 37 EAST, CITY OF PALM BAY,  
BREVARD COUNTY, FLORIDA.  
SHEET 2 OF 5 SHEETS

CANAL NO. 78  
DISTRICT  
DRAINAGE  
TILLMAN  
MELBOURNE



CALC. BY: S.P.  
DRAWN BY: G.A.  
CHECKED BY: S.P.  
APPROVED BY: J.E.

JAMES EDWARD CLARK  
CIVIL ENGINEER  
MIAMI - FLORIDA  
56 LOTS THIS SHEET SHEET 2 OF 5 SHEETS