

# PORT MALABAR UNIT THIRTY - NINE

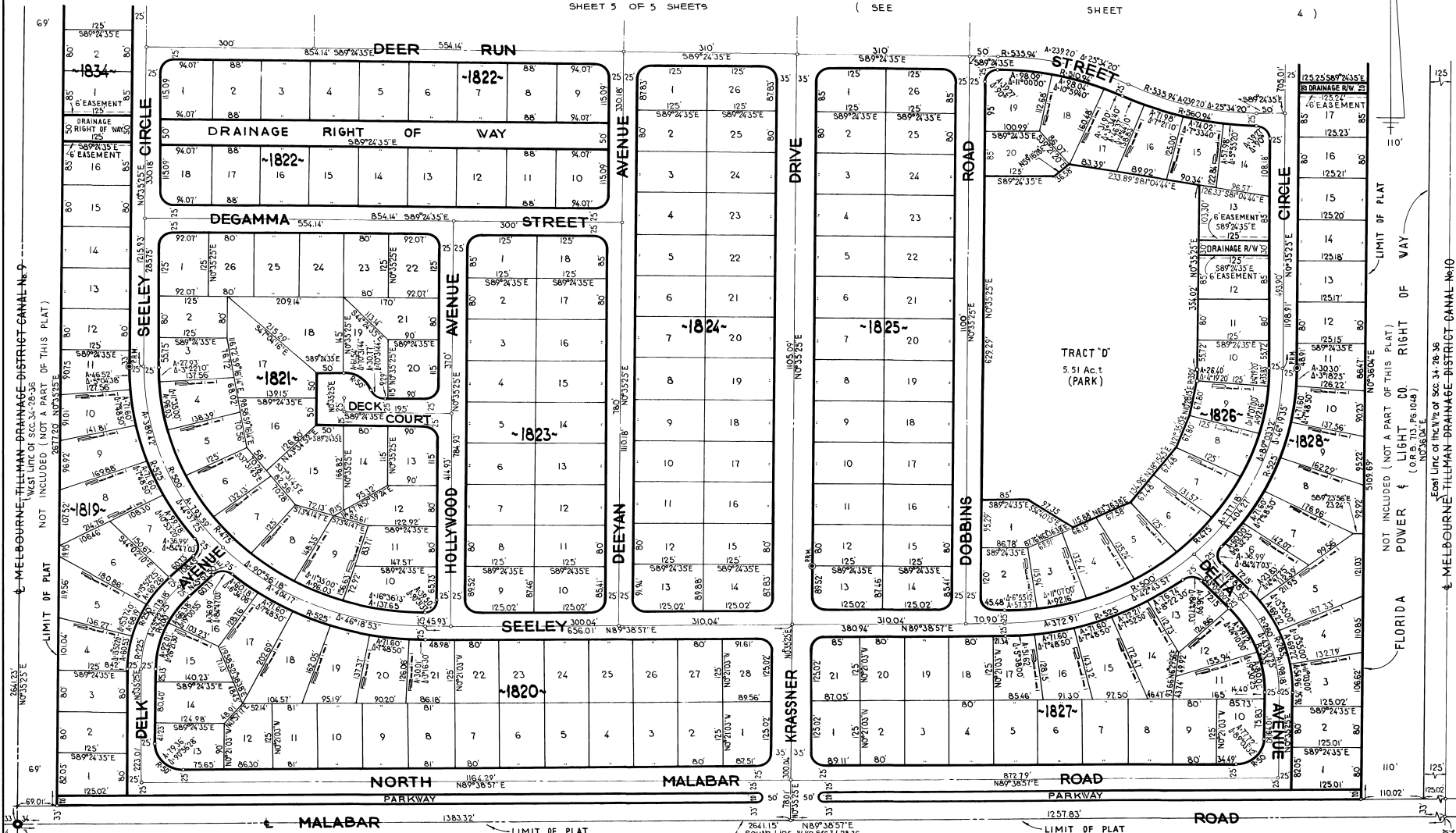
A SUBDIVISION OF A PORTION OF SECTION 34  
TOWNSHIP 28 SOUTH, RANGE 36 EAST  
AND

A RESUBDIVISION OF A PORTION OF PORT MALABAR UNIT TWENTY SIX  
CITY OF PALM BAY, BREVARD COUNTY, FLORIDA

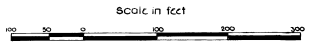
SHEET 3 OF 5 SHEETS

PLAT BOOK 21  
AND PAGE 28

( SEE SHEET 4 ) ( SEE SHEET 4 )



CALL BY: C.E.T.  
DRAWN BY: G.A.  
CHECKED BY: S.P.  
APPROVED BY: J.E.C.



JAMES EDWARD CLARK  
CIVIL ENGINEER  
MIAMI FLORIDA