

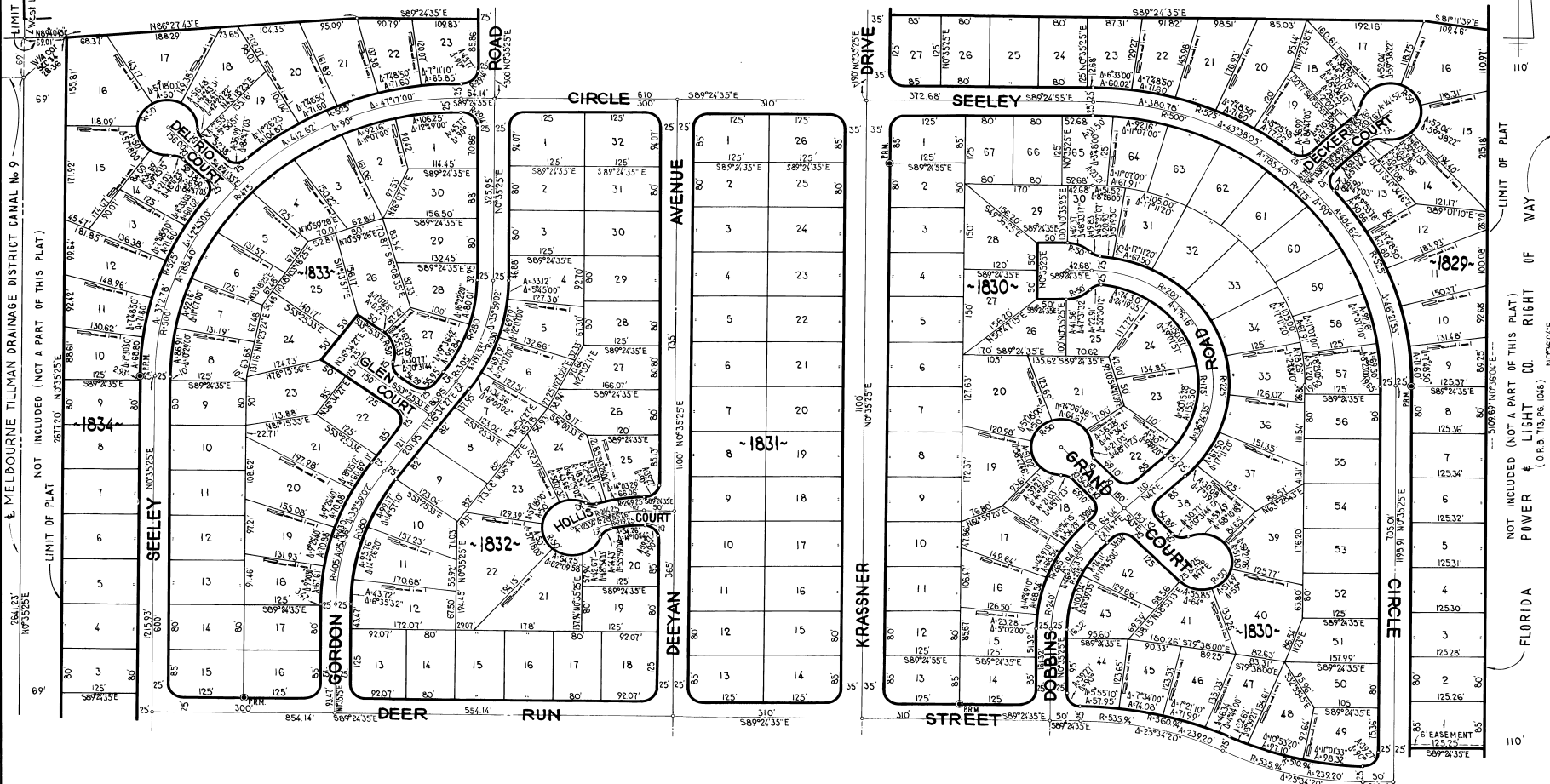
# PORT MALABAR UNIT THIRTY - NINE

A SUBDIVISION OF A PORTION OF SECTION 34  
TOWNSHIP 28 SOUTH, RANGE 36 EAST  
AND  
A RESUBDIVISION OF A PORTION OF PORT MALABAR UNIT TWENTY SIX  
CITY OF PALM BAY, BREVARD COUNTY, FLORIDA  
SHEET 4 OF 5 SHEETS

PLAT BOOK 21  
AND PAGE 27

MELBOURNE TILLMAN DRAINAGE DISTRICT CANAL No 9  
 NOT INCLUDED (NOT A PART OF THIS PLAT)  
 LIMIT OF PLAT  
 264.31' N 0° 35' 35" E  
 69'

SEE



SEE

SHEET

3 )

LIMIT OF PLAT  
 110'  
 125'  
 FLORIDA  
 POWER & LIGHT CO. RIGHT OF WAY  
 (O.R.B. 715.P.6 (048))  
 NOT INCLUDED (NOT A PART OF THIS PLAT)  
 MELBOURNE TILLMAN DRAINAGE DISTRICT CANAL No 10  
 East Line of the 1/2 of Sec. 34-28-36  
 110'  
 125'

SEE

SHEET

5 )



CALC. BY: C.E.T.  
 DRAWN BY: G.A.  
 CHECKED BY: J.S.P.  
 APPROVED BY: J.P.

JAMES EDWARD CLARK  
 CIVIL ENGINEER  
 MIAMI - FLORIDA