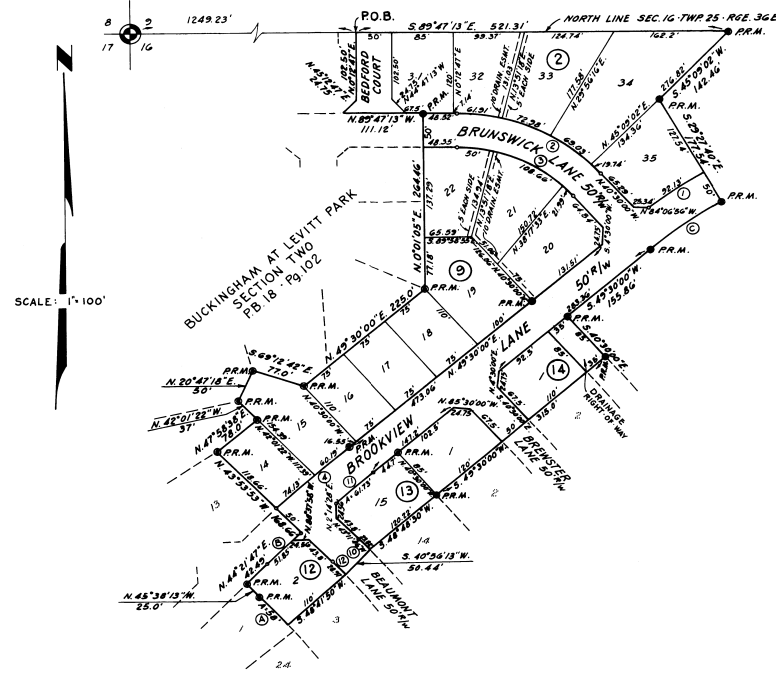


BUCKINGHAM AT LEVITT PARK

SECTION THREE - A -

SECTION 16, TWP. 25 S., RGE. 36 E.

BREVARD COUNTY, FLORIDA



CURVE	RADIUS	CENTRAL ANGLE	ARC	TANGENT	CHORD	BEARING
A	766.79'	112°02'	58.00'	29.01'	57.99'	N 45° 38' 13" W
B	224.84'	174°20'	67.22'	33.62'	67.21'	N 45° 13' 57" E
C	648.80'	11°52'30"	125.00'	62.69'	124.81'	S 89° 47' 13" E
D	658.80'	7°33'15"	52.13'	46.13'	52.06'	S 50° 48' 43" W
E	260.00'	29°17'13"	223.60'	119.28'	276.83'	N 63° 08' 37" W
F	310.00'	29°17'13"	180.65'	26.34'	173.13'	N 65° 08' 37" W
G	224.84'	174°20'	124.32'	62.69'	124.30'	N 45° 13' 57" E
H	326.79'	174°20'	23.82'	11.91'	23.81'	N 45° 27' 30" W
I	224.84'	174°20'	61.73'	30.86'	61.72'	N 45° 13' 57" E
J	876.73'	174°20'	28.91'	14.45'	28.90'	N 45° 13' 57" E

DESCRIPTION

A PORTION OF SECTION 16, TWP. 25 S., RGE. 36 E., BREVARD COUNTY, FLORIDA, BEING MORE PARTICULARLY DESCRIBED AS FOLLOWS: COMMENCE AT THE NW CORNER OF SAID SECTION 16; THENCE S. 89° 47' 13" E. ALONG THE NORTH LINE OF SAID SECTION 16 A DISTANCE OF 1249.23 FEET TO THE POINT OF BEGINNING; THENCE CONTINUE S. 89° 47' 13" E. ALONG THE LAST DESCRIBED COURSE A DISTANCE OF 251.31 FEET; THENCE S. 45° 02' 02" W. A DISTANCE OF 142.46 FEET; THENCE S. 23° 27' 40" E. A DISTANCE OF 177.54 FEET TO A POINT ON A CURVE; THENCE SOUTHWESTERLY ALONG A CIRCULAR CURVE DIVERGING TO THE LEFT AND HAVING FOR ITS COMPONENT PARTS A RADIUS OF 648.80 FEET AND A CENTRAL ANGLE OF 11° 02' 20" FOR AN ARC DISTANCE OF 125.00 FEET TO A POINT OF TANGENCY; THENCE S. 49° 30' 00" W. A DISTANCE OF 155.86 FEET; THENCE S. 40° 30' 00" E. A DISTANCE OF 85.00 FEET; THENCE S. 49° 30' 00" W. A DISTANCE OF 315.00 FEET; THENCE S. 48° 48' 00" W. A DISTANCE OF 120.22 FEET; THENCE S. 40° 56' 13" W. A DISTANCE OF 50.44 FEET; THENCE S. 46° 44' 50" W. A DISTANCE OF 110.00 FEET TO A POINT ON A CURVE; THENCE NORTHWESTERLY ALONG A CIRCULAR CURVE DIVERGING TO THE LEFT AND HAVING FOR ITS COMPONENT PARTS A RADIUS OF 766.79 FEET AND A CENTRAL ANGLE OF 11° 02' 20" FOR AN ARC DISTANCE OF 125.00 FEET; THENCE N. 44° 21' 47" E. A DISTANCE OF 42.49 FEET TO A POINT OF CURVATURE; THENCE NORTHWESTERLY ALONG A CIRCULAR CURVE DIVERGING TO THE RIGHT AND HAVING FOR ITS COMPONENT PARTS A RADIUS OF 224.84 FEET AND A CENTRAL ANGLE OF 174° 20' FOR AN ARC DISTANCE OF 67.22 FEET; THENCE N. 43° 33' 55" W. A DISTANCE OF 168.66 FEET; THENCE N. 47° 58' 38" E. A DISTANCE OF 180.00 FEET; THENCE N. 45° 01' 28" W. A DISTANCE OF 31.00 FEET; THENCE N. 20° 47' 18" E. A DISTANCE OF 50.00 FEET; THENCE S. 69° 12' 42" E. A DISTANCE OF 77.00 FEET; THENCE N. 45° 30' 00" E. A DISTANCE OF 225.00 FEET; THENCE N. 01° 02' E. A DISTANCE OF 204.46 FEET; THENCE N. 89° 47' 13" E. A DISTANCE OF 111.12 FEET; THENCE N. 45° 12' 47" E. A DISTANCE OF 24.75 FEET; THENCE N. 07° 12' 47" E. A DISTANCE OF 102.30 FEET TO THE POINT OF BEGINNING AND CONTAINING 6.418 ACRES MORE OR LESS.

NOTE!

- ⊙ DENOTES PERMANENT REFERENCE MONUMENT (P.R.M.)
- REAR LOT LINE: 7.5' UTILITY EASEMENT FOR GAS, ELECTRIC & TELEPHONE AT REAR OF ABUTTING LOTS.
- REAR LOT LINE: 10' UTILITY EASEMENT FOR GAS, ELECTRIC & TELEPHONE AT REAR OF LOTS ABUTTING N. LINE SECTION 16.
- SIDE LOT LINE: 3' UTILITY EASEMENT FOR GAS, ELECTRIC & TELEPHONE AT EACH SIDE LOT LINES.

PREPARED BY
BREVARD ENGINEERING CO.
CITY OF CAPE CANAVERAL, FLA.

DEDICATION

KNOW ALL MEN BY THESE PRESENTS, That the Corporation named below, being the owner in fee simple of the lands described in the foregoing caption to this plat, hereby dedicates said lands and plat for the uses and purposes therein expressed and dedicates the Streets, alleys, thoroughfares, parks, canals and drainage easements shown hereon to the perpetual use of the public, and
IN WITNESS WHEREOF, has caused these presents to be signed and attested by the officers named below and its corporate seal to be affixed hereon this June 16, 1965
LEVITT AND SONS OF FLORIDA, INC.
By: James H. Levitt President
Attest: Edward J. Standeman Jr. Secretary
Signed and sealed in the presence of:
Paul M. Dolson
Gregg Cannon

STATE OF Fla. COUNTY OF BREVARD
THIS IS TO CERTIFY, That on June 16, 1965
before me, an officer duly authorized to take acknowledgments in the State and County aforesaid, personally appeared JAMES H. LEVITT and LEAHARRA Z. KELLY, JR. respectively, V.G.S. President and FRANK S. KAYE, JR. of the above named corporation incorporated under the laws of the State of Florida, to me known to be the individuals and officers described in and who executed the foregoing Dedication and severally acknowledged the execution thereof to be their free act and deed as such officers thereto duly authorized; that the official seal of said corporation is duly affixed thereto; and that the said Dedication is the act and deed of said corporation.
IN WITNESS WHEREOF, I have hereto set my hand and seal on the above date.
Paul M. Dolson
NOTARY PUBLIC
My Commission Expires March 1, 1966

CERTIFICATE OF SURVEYOR
KNOW ALL MEN BY THESE PRESENTS, That the undersigned, being a licensed and registered land surveyor, does hereby certify that on APRIL 22, 1965, he completed a survey of the lands as shown in the foregoing plat, that said plat is a true and correct representation of the lands therein described and plotted; that the reference monuments have been placed as shown therein as required by Chapter 177, Florida Statutes; and that said land is located in Brevard County, Florida. Dated: MAY 20, 1965
Edward J. Standeman Jr. Registration No. 1958

CERTIFICATE OF APPROVAL BY MUNICIPALITY
THIS IS TO CERTIFY, That on July 2, 1965, the City Council, City of Cape Canaveral, approved the foregoing plat.
Attest: J. W. Williams MAYOR.
W. Harrison CITY CLERK.

CERTIFICATE OF APPROVAL BY BOARD OF COUNTY COMMISSIONERS
THIS IS TO CERTIFY, That on _____ the foregoing plat was approved by the Board of County Commissioners of Brevard County, Florida.
Attest: _____ Chairman of the Board.

Clerk of the Board.
Approved: _____ County Engineer

CERTIFICATE OF APPROVAL BY ZONING COMMISSION
THIS IS TO CERTIFY, That on _____ the Zoning Commission of the above Municipality approved the foregoing plat.

Zoning Director.

CERTIFICATE OF CLERK
I HEREBY CERTIFY, That I have examined the foregoing plat, and that it complies in form with all the requirements of Chapter 177, Florida Statutes, and was filed for record on June 16, 1965 at 11:00 AM File No. 473282
Charles R. Barnes Jr.
Clerk of the Circuit Court in and for Brevard County, Fla.