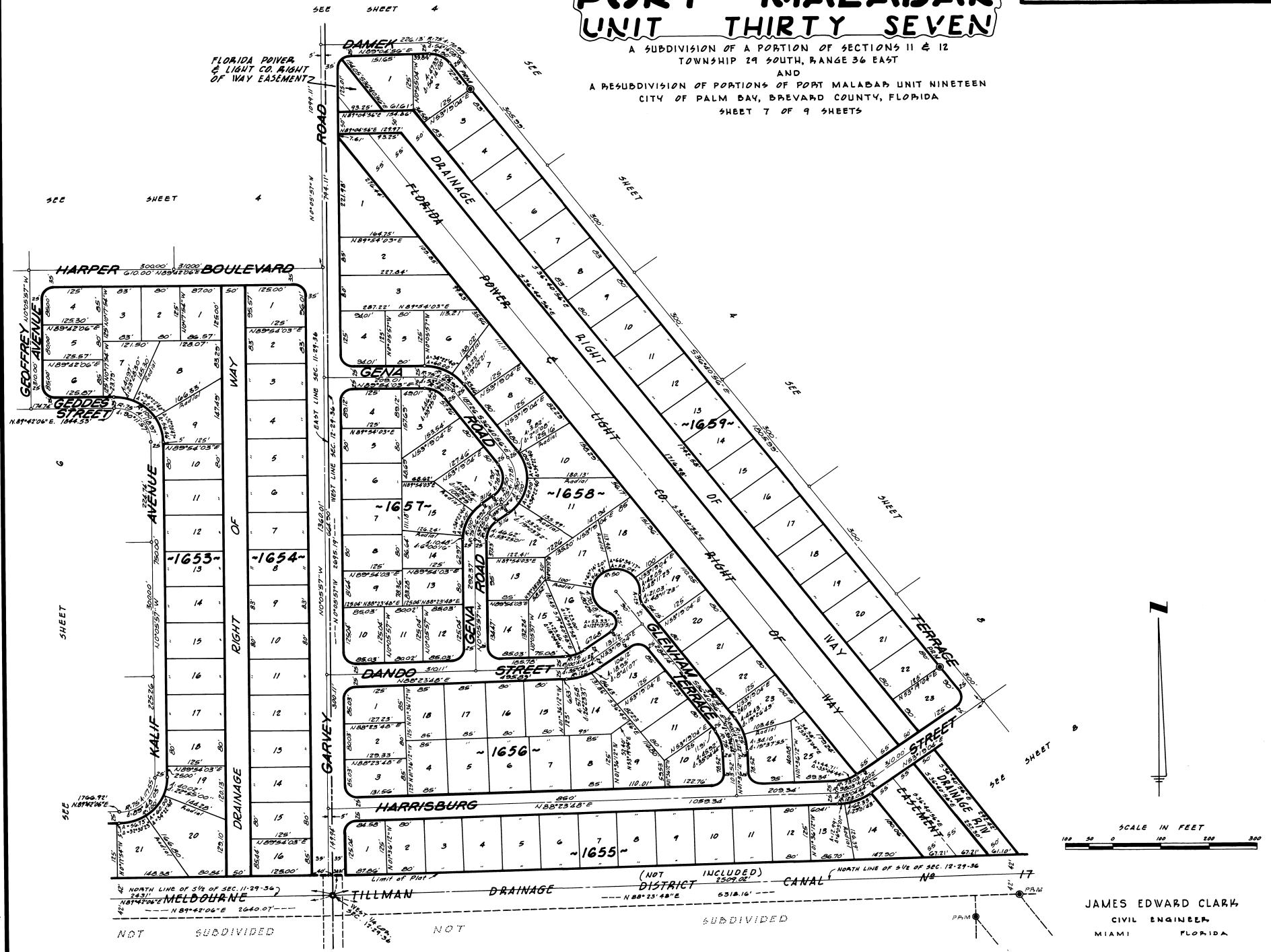


# PORT MALABAR UNIT THIRTY SEVEN

PLAT BOOK 20  
AND PAGE 8

A SUBDIVISION OF A PORTION OF SECTIONS 11 & 12  
TOWNSHIP 29 SOUTH, RANGE 36 EAST  
AND  
A RESUBDIVISION OF PORTIONS OF PORT MALABAR UNIT NINETEEN  
CITY OF PALM BAY, BREVARD COUNTY, FLORIDA  
SHEET 7 OF 9 SHEETS



CALCULATED BY: A.H.  
DRAWN BY: W.A. GEA.  
CHECKED BY: C.T.  
APPROVED BY: J.B.

JAMES EDWARD CLARK,  
CIVIL ENGINEER,  
MIAMI FLORIDA