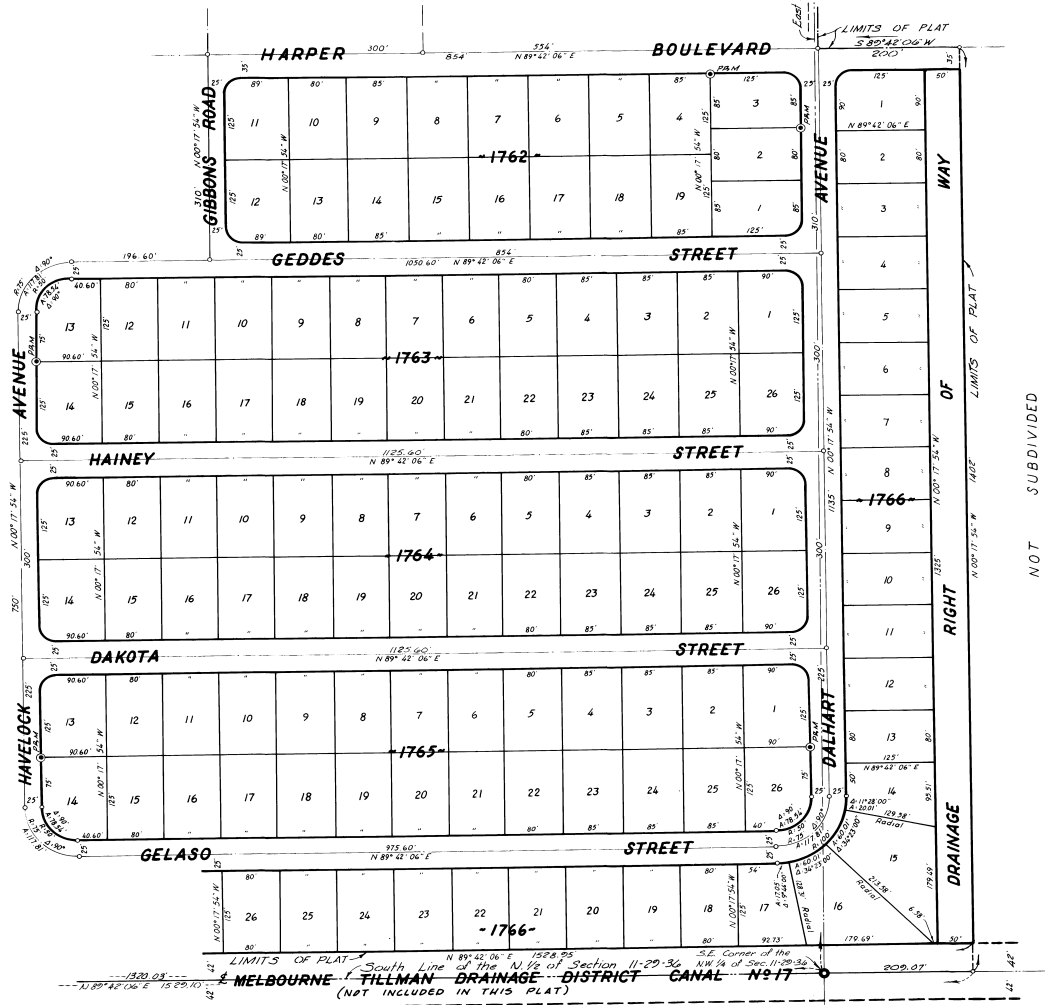


PORT MALABAR UNIT THIRTY SIX

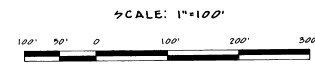
A SUBDIVISION OF A PORTION OF SECTIONS 2, 3, 10 AND 11
TOWNSHIP 29 SOUTH, RANGE 36 EAST
CITY OF PALM BAY, BREVARD COUNTY, FLORIDA
SHEET 11 OF 13 SHEETS

SEE SHEET

10



NOT SUBDIVIDED



12

SHEET

SEE

NOT SUBDIVIDED

JAMES EDWARD CLARK
CIVIL ENGINEER
MIAMI FLORIDA

Calculated by: C.E.T.
Drawn by: W.
Checked by: C.E.T.
Approved by: K.K.K.