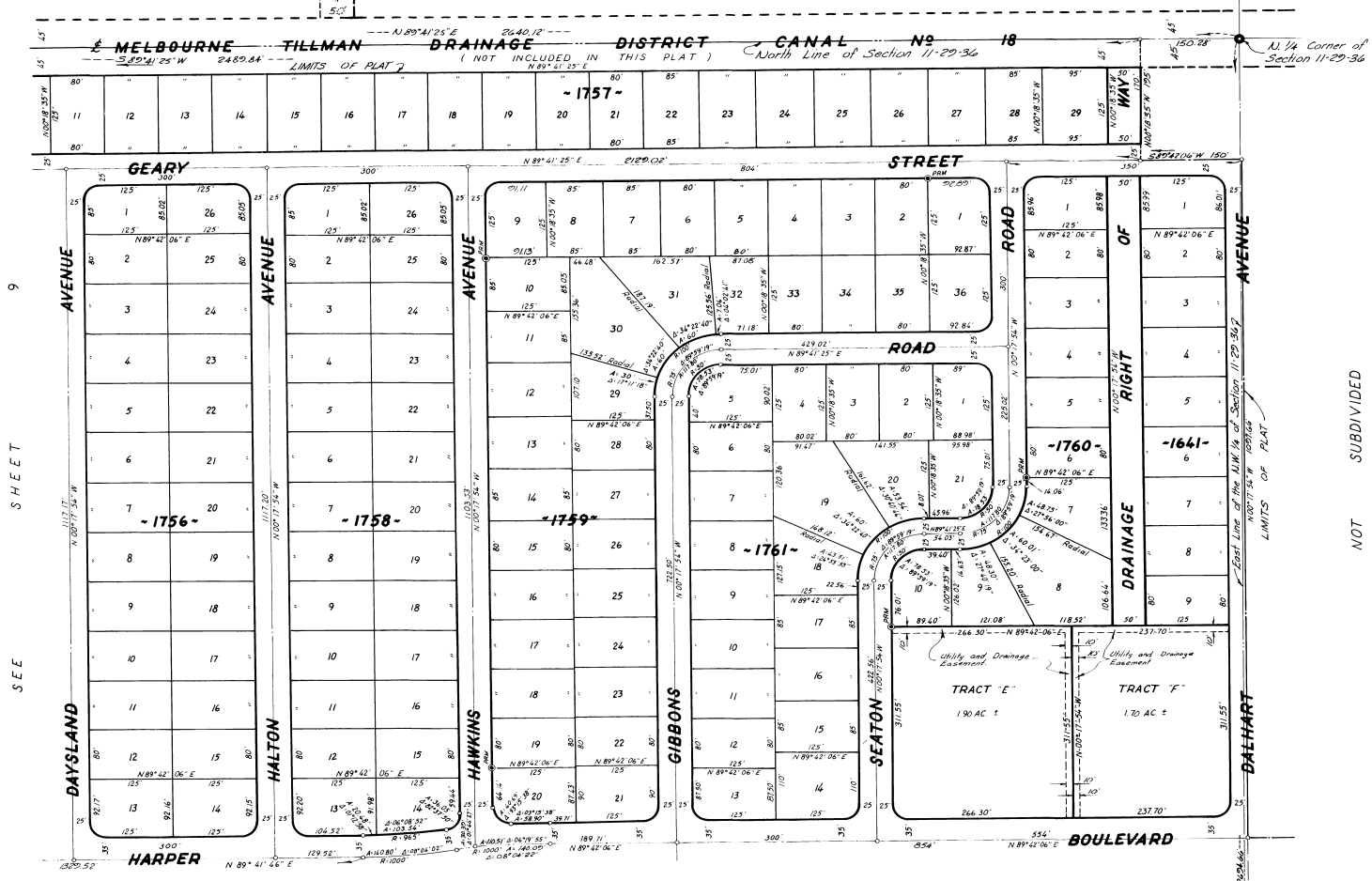


PORT MALABAR UNIT THIRTY SIX

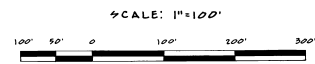
A SUBDIVISION OF A PORTION OF SECTIONS 2, 3, 10 AND 11
TOWNSHIP 29 SOUTH, RANGE 36 EAST
CITY OF PALM BAY, BREVARD COUNTY, FLORIDA
SHEET 10 OF 13 SHEETS

PORT MALABAR UNIT TWENTY
P.B. 15 - P.B. 129-139

NOT SUBDIVIDED



NOT SUBDIVIDED



Calculated by: C.E.T.
Drawn by: W.J.
Checked by: C.E.T.
Approved by: K.A.K.

SEE SHEET 12 SEE SHEET 11

JAMES EDWARD CLARK
CIVIL ENGINEER
MIAMI FLORIDA