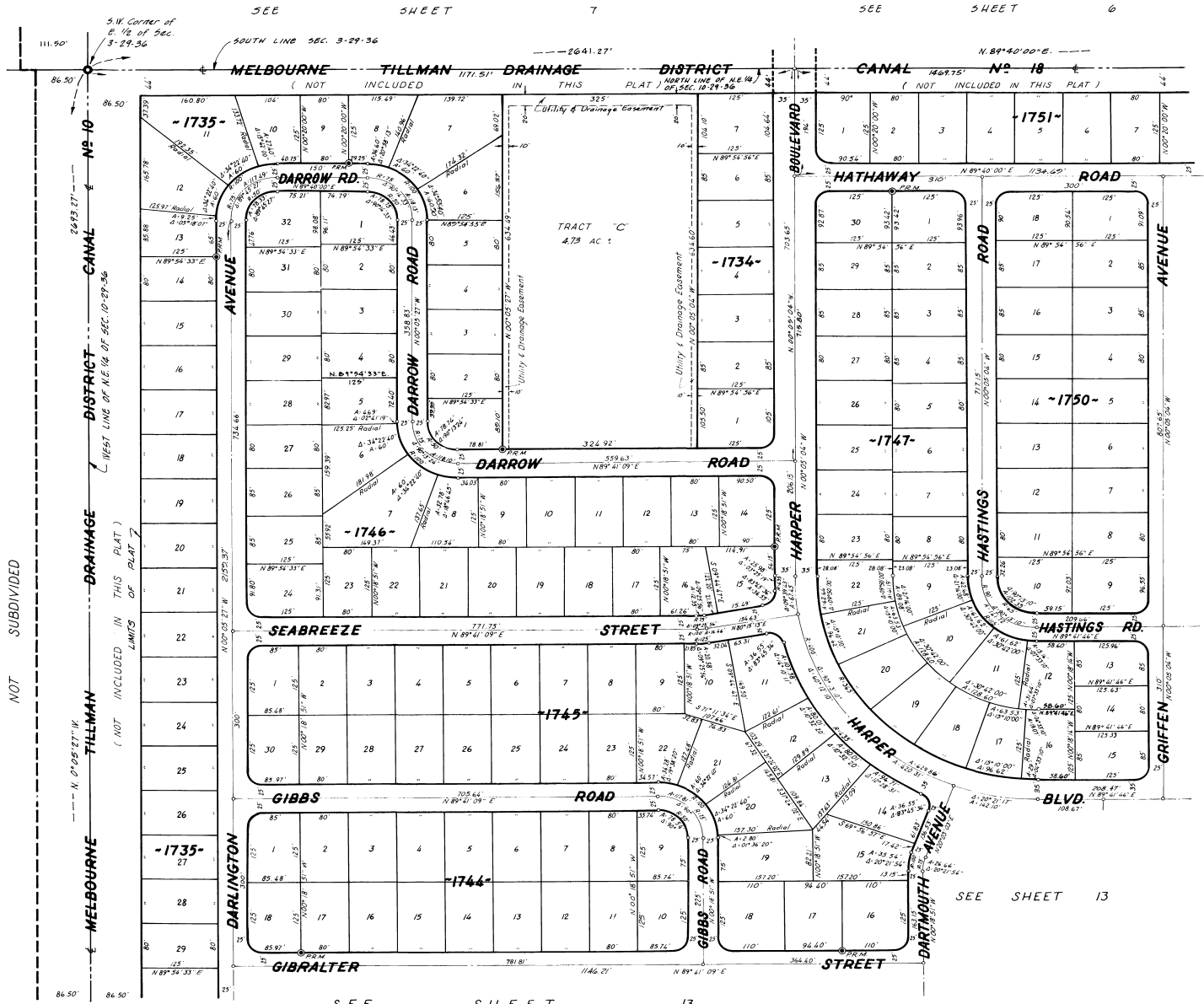
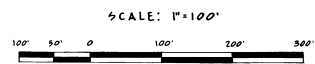


PORT MALABAR UNIT THIRTY SIX

A SUBDIVISION OF A PORTION OF SECTIONS 2, 3, 10 AND 11
TOWNSHIP 29 SOUTH, RANGE 36 EAST
CITY OF PALM BAY, BREVARD COUNTY, FLORIDA
SHEET 8 OF 13 SHEETS



SEE SHEET 9



Calculated by: C.E.T.
Drawn by: W.J.
Checked by: C.E.T.
Approved by: K.F.H.

JAMES EDWARD CLARK
CIVIL ENGINEER
MIAMI FLORIDA