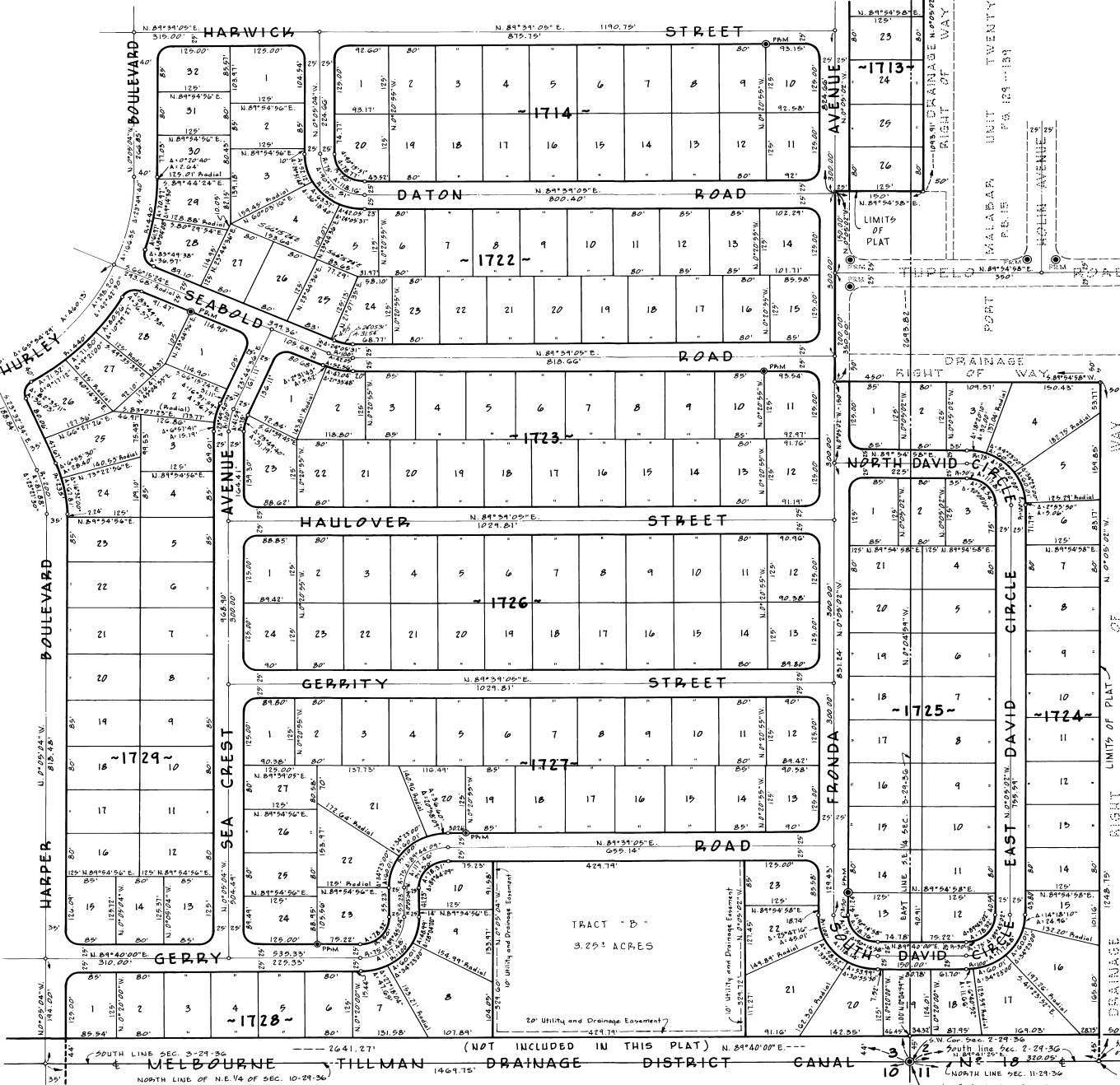


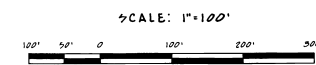
# PORT MALABAR UNIT THIRTY SIX

A SUBDIVISION OF A PORTION OF SECTIONS 2, 3, 10 AND 11 TOWNSHIP 29 SOUTH, RANGE 36 EAST CITY OF PALM BAY, BREVARD COUNTY, FLORIDA SHEET 6 OF 13 SHEETS

SEE SHEET 7



PORT MALABAR UNIT TWENTY P.F. 15 FIG. 124-134



Calculated by: JEC  
Drawn by: G.E.K.  
Checked by: C.E.T.  
Approved by: K.A.H.

JAMES EDWARD CLARK  
CIVIL ENGINEER,  
MIAMI FLORIDA