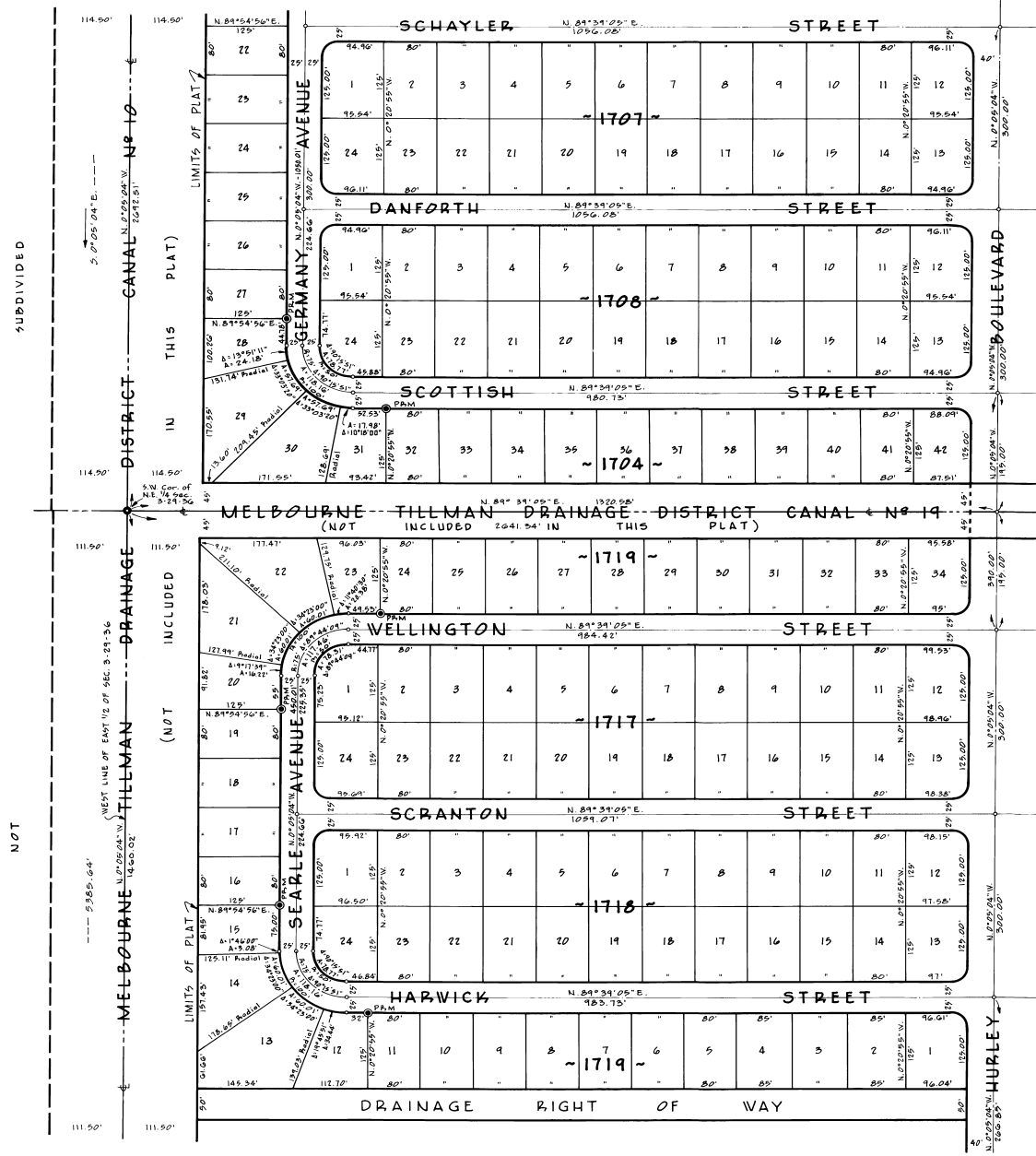


# PORT MALABAR UNIT THIRTY SIX

A SUBDIVISION OF A PORTION OF SECTIONS 2, 3, 10 AND 11 TOWNSHIP 29 SOUTH, RANGE 36 EAST CITY OF PALM BAY, BREVARD COUNTY, FLORIDA SHEET 4 OF 13 SHEETS

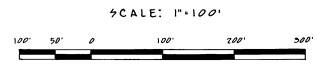


SUBDIVIDED

NOT

Calculated by: J.R.R.  
in by: G.E.R.  
Checked by: C.S.T.  
Approved by: K.F.H.

SEE SHEET 5



JAMES EDWARD CLARK  
CIVIL ENGINEER  
MIAMI FLORIDA